



Rafiki

2024





ACTION DIRECTE (9A), FRANKENJURA, GERMANY



CLIMBERS TO CLIMBERS

Story of Rafiki had begun long before the brand got its name and the first T-shirt was made. The lifestyle and philosophy of it was always with us back then - when we were getting pumped on long rock lines, while projecting difficult bouldering sequences, on a wobbly slackline and when sitting by the fire with a bunch of friends in the evening.

Rafiki's brand philosophy is like climbing a rock route, for which everyone must choose their own, unique way to approach it.

#RAFIKICLIMBING



WOMEN'S COLLECTION

AKIYO	34-35
BABSI	26-27
CEILLAC CTN	20-21
ESTRELLA	38-39
FALAISES	62-63
FEMIO	50-51
FINALE	24-25
GEMINIS	56-57
CHAIN	67-68
CHAIN CAPRI	64-65
CHULILLA	22-23
JAY	32-33
JUNO	58-59
MANDREA	46-47
MASSONE	54-55
MELLO	28-29
MURIEL	52-53
NAGO CTN	14-15
NOIA	44-45
ROSARIO	30-31
SAUME	36-37
SHIVA	60-61
SUESCA CTN	16-17
TARRAGONA	48-49
VELLA	42-43
VITA CTN	18-19
ZULU UNI	40-41

MEN'S COLLECTION

ANUK	94-95
ARCOS	76-77
BETA	108-109
CLIFFBASE	100-101
CRAG	102-103
CRIMP	110-111
CRUX	98-99
DRIVE	92-93
GNAR	104-105
GRAB	74-75
GRANITE	78-79
GRIP	106-107
JAM	82-83
LEAD II	88-89
MEGOS	96-97
MOONSTONE	90-91
PITON	80-81
SLAB	72-73
TRAVERSE	84-85
ZONE	70-71
ZULU UNI	86-87

KIDS COLLECTION

KAILAS JR	114-115
PEDRO JR	118-119
RUMNEY JR	116-117



SHOES COLLECTION

ACCESS M	126-127
ACCESS W	134-135
ESSEQUIBO M	128-129
MASSI M	124-125
MASSI W	132-133
MONTE M	122-123
MONTE W	130-131

ACCESSORIES

BISHOP	149
CAMP	146
COLLAPSE	138-139
DROP	138-139
GRADE	138-139
GRIT 28	140-141
GRIT 40	140-141
GUIDE BOOK COVER	145
HAULER 50	142
CHALK	147
ROPER	143
SCOOP	148
SCRUB 26	144

PROMOTION

BANNER	152
BOW FLAG	152
CUBE	153
HANGERS	155
LOGO STAND	153
NALGENE BOTTLE	155
STICKERS	155



GO SUSTAINABLE



REDUCE



RECYCLE



REUSE



RETHINK

All Rafiki materials are chosen with full respect for the environment.
In order to reduce the amount of used plastics, we also reduce the size of packaging.
All Rafiki products are packed into recycled plastic bags.



The Global Organic Textile Standard (GOTS)

... the strictest certification for textiles made of organic textile fibers.



organic cotton

... is produced and certified according to organic farming standards.



... is trusted worldwide zipper producer with impeccable production standards and quality control processes.



... is a natural and completely biodegradable fiber with excellent thermoregulation capabilities and high moisture absorption capabilities.



Lenzing Modal

... fibers are certified as biodegradable and compostable.



viscose yarn

.. is an artificial cellulose fiber made from dissolved wood pulp from trees.



SPRING - SUMMER | 2024 | WOMEN map

NEW 93% cotton 7% elastane light - elastic	 50% Lenzing Modal 50% organic cotton lightweight - eco	NEW 95% organic cotton 5% elastane	 100% organic cotton indian - eco	NEW 55% linen 45% cotton lightweight - eco	94% polyamide 6% elastan quickdry - ultralight	97% cotton 3% elastane	NEW 55% linen 45% cotton lightweight - eco	65% cotton 29% polyester 4% rayon 2% elastane denim climbing
 NEW NAGO CTN	 CHULLILLA	 NEW BABSÍ	 JAY	 NEW SAUME	 VELLA	 MURIEL	 NEW JUNO	 FALAISES
 NEW SUESCA CTN	 FINALE	 NEW MELLO	 NEW AKIYO		 NOIA	 MASSONE	 NEW SHIVA	 CHAIN CAPRI
 NEW VITA CTN		 NEW ROSARIO		65% polyester 35% cotton	 NEW MANDREA	 GEMINIS		 CHAIN
 NEW CEILLACTN		 ESTRELLA		 NEW ZULUUNI	 TARRAGONA			
					 FEMIO			

#RAFIKICLIMBING



SPRING - SUMMER | 2024 | MEN map

<p>50% Lenzing Modal 50% organic cotton</p> <p>lightweight - eco</p>	<p>NEW</p> <p>95% organic cotton 3% elastane</p>	<p>100% organic cotton</p> <p>indian - eco</p>	<p>NEW</p> <p>55% linen 45% cotton</p> <p>lightweight - eco</p>	<p>94% polyamide 6% elastan</p> <p>quikdry - ultralight</p>	<p>97% cotton 3% elastane</p>	<p>NEW</p> <p>55% linen 45% cotton</p> <p>lightweight - eco</p>	<p>65% cotton 29% polyester 4% rayon 2% elastane</p> <p>denim climbing</p>	<p>100% organic cotton</p> <p>indian - eco</p>
ZONE	NEW SLAB	NEW ARCOS	NEW JAM	LEAD II	NEW ANUK	NEW GNAR	BETA	KAILAS JR
	NEW GRAB	NEW GRANITE		MOONSTONE	MEGOS	NEW GRIP	CRIMP	
		82% recycled polyester 14% tencel 4% elastane		DRIVE	CRUX			
		lightweight - recycled						
					CLIFFBASE			RUMNEY JR
	TRAVERSE	PITON	NEW ZULU UNI		CRAG			PEDRO JR



SPRING - SUMMER | 2024 | SHOES map

NEW

MEN'S
SEMI-APPROACH
SHOES



NEW MONTE M

NEW

MEN'S
STREET SHOES



NEW MASSI M

NEW

MEN'S
STREET HYBRID
SHOES



NEW ACCESS M

NEW

MEN'S
SLIP-ON SHOES



NEW ESSEQUIBO M

NEW

WOMEN'S
SEMI-APPROACH
SHOES



NEW MONTE W

NEW

WOMEN'S
STREET SHOES



NEW MASSI W

NEW

WOMEN'S
STREET HYBRID
SHOES



NEW ACCESS M

#RAFIKICLIMBING

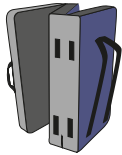


SPRING - SUMMER | 2024 | ACCESSORIES map



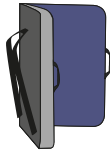
NEW

CRASH PADS



NEW

COLLAPSE



NEW

GRADE



NEW

DROP



NEW

BAGS



NEW

GRIT 40



ROPER



NEW

GRIT 28



NEW

SCRUB 26



HAULER 50



NEW

GUIDE BOOK COVER



CAPS



CAMP



MAGNESIUM



MG BALL 40G



MG DOSE 100G



MG SACK 250G



MG LIQUID 100ML



MG LIQUID 200ML



CHALK BAGS



SCOOP



BISHOP



#RAFIKICLIMBING





RAFIKI WOMEN



ANDALUSIA, SPAIN

Rafiki women's bra, newly in cotton quality, will thrill every woman who's enthusiastic about climbing or yoga. Its material is breathable and light overall, making it a good choice for warm days or indoor

climbing. It offers a maximum of support, and its padding can be removed as needed. This bra has an attractively designed shoulder attachment in back.



NAGO CTN **NEW**



WOMEN'S COTTON ELASTIC BRA WITH REMOVABLE CUPS

FABRIC

MAIN: 93% cotton 7% spandex
INNER: 92% polyester 8% elastane

breathable, stretch, soft

INFO

fit: slim
size: 34-40

SIZE 36
weight: 85 g
back length: 37 cm

FEATURES

- cotton stretch fabric
- internal bra liner with removable modesty cups
- X-shaped back stripes with flat seams



rose wine
10041605RFX

india ink
10041604RFX

ensign blue
10041603RFX



CÈUSE, FRANCE

Our new Suesca women's climbing singlet should be there in the backpack of every woman who loves climbing or yoga. Designed for climbers, this singlet won't restrict your movement in any way. Its internal bra offers a maximum of support, and its padding can be removed as needed. The unique blend of 93% cotton and 7% elastane provides a lightweight

and packable design that's perfect for on-the-go activities. The breathable cotton blend wicks away moisture, keeping you dry and comfortable throughout your climb.



SUESCA CTN **NEW**



WOMEN'S COTTON ELASTIC SINGLET WITH BUILT IN SPORT BRA

FABRIC

MAIN: 93% cotton 7% spandex
INNER: 92% polyester 8% elastane

breathable, stretch, soft

INFO

fit: slim
size: 34-40

SIZE 36
weight: 120 g
back length: 58 cm

FEATURES

- cotton stretch fabric
- internal bra liner with removable modesty cups
- X-shaped back stripes with flat seams



rose wine
10041630RFX

india ink
10041629RFX

ensign blue
10041628RFX



MANDALA BOULDERHALLE, GERMANY

Team climbers favourite piece from the functional collection in a new blend of material for this year. The breathable cotton blend wicks away moisture, keeping you dry and comfortable. No matter if you compete in climbing or just train for fun, our elastic shorts won't restrict you in any step or dynamic jump. Be truly 'IN' and complement your Vita shorts with

one of the Rafiki bras or tank tops. On top of that, the whole outfit, including magnesium and your climbing shoes, will easily fit into a medium-sized handbag.



WOMEN'S COTTON ELASTIC SHORTS

FABRIC

MAIN: 93% cotton 7% spandex

breathable, stretch, soft

INFO

fit: slim
size: 34-40

SIZE 36
weight: 108 g
inseam length: 10 cm

FEATURES

- cotton stretch fabric
- wide waist band
- triangle gusset for reinforcement and comfort
- small secret pocket in waist band
- flatlock construction
- full area printing



rose wine
10041644RFX

india ink
10041643RFX

ensign blue
10041642RFX



DĚČÍNSKÝ SNĚŽNÍK, CZECH REPUBLIC

The latest addition to our elastic collection - performance elastic trousers made from 93% cotton and 7% elastane. These trousers are specifically designed for climbing and yoga enthusiasts, featuring a light, elastic and durable fabric that can keep up with even the most demanding activities. The stretchy material ensures a comfortable and flexible fit, while

the cotton blend provides breathability and soft feel. Whether you're a seasoned climber or a dedicated yogi, these trousers are perfect for you.



CEILLAC CTN **NEW**



WOMEN'S COTTON ELASTIC LEGGINGS

FABRIC

MAIN: 93% cotton 7% spandex

breathable, stretch, soft

INFO

fit: slim
size: 34-40

SIZE 36
weight: 195 g
inseam length: 67 cm

FEATURES

- cotton stretch fabric
- wide waist band
- triangle gusset for reinforcement and comfort
- side pockets
- flatlock construction
- full area printing



rose wine
10041503RFX



india ink
10041502RFX



ensign blue
10041501RFX



DĚČÍNSKÝ SNĚŽNÍK, CZECH REPUBLIC

Do you care about environment and your style? If the answer is yes, then the women's Chulilla T-shirt will make you happy twice. It won't lie heavy neither on your body nor on your conscience. The combination of 50% bio cotton and 50% Lenzing Modal® is light and airy. The T-shirt is made of an eco-friendly material with neutral carbon

footprint. This garment is pleasant both to touch and to look at. You will definitely stand out among other climbers thanks to its colourful asymmetric parts.



CHULILLA



WOMEN'S PERFORMANCE LIGHTWEIGHT SHORT SLEEVE TEE

FABRIC

MAIN: 50% modal lenzing 50% organic cotton

breathable, lightweight, stretch, soft, wicking

INFO

fit: straight
size: 34-42

SIZE 36
weight: 85 g
back length: 61 cm

FEATURES

- eco friendly fabric
- natural touch
- water prints



india ink
10041546RFX

lantana
10041547RFX

aquifer
10041545RFX



ANDALUSIA, SPAIN

Next time you set off for an outdoor boulder, put on the women's Finale long-sleeved T-shirt. It's made of a technical material which is light and moisture-wicking. We've chosen the combination of bio cotton and Lenzing Modal®, whose fibre comes from beechwood. The long sleeves protect you from

chafing and cold even when climbing in the shade. Don't be afraid of the bold colour combination, just be attractive and yourself.



FINALE



WOMEN'S PERFORMANCE LIGHTWEIGHT LONG SLEEVE TEE

FABRIC

MAIN: 50% modal lenzing 50% organic cotton

breathable, lightweight, stretch, soft, wicking

INFO

fit: straight
size: 34-42

SIZE 36
weight: 110 g
back length: 61 cm

FEATURES

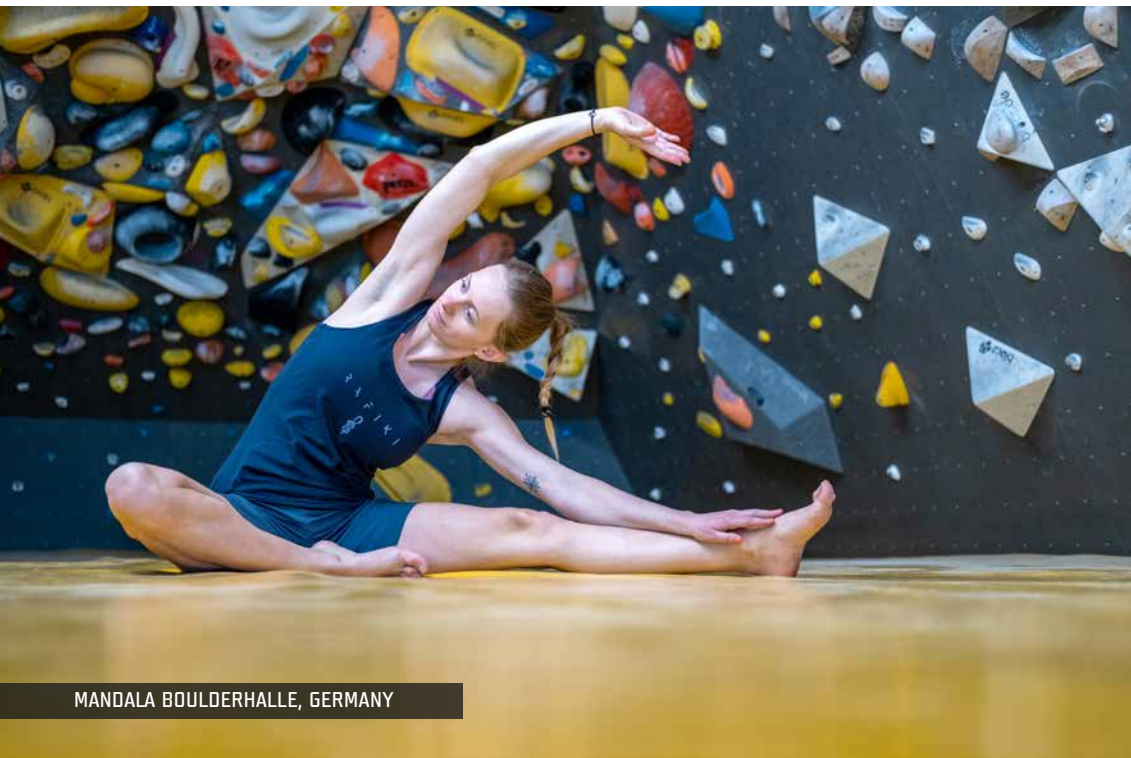
- eco friendly fabric
- natural touch



india ink
10041528RFX

lantana
10041529RFX

aquifer
10041527RFX



MANDALA BOULDERHALLE, GERMANY

Our latest addition to the collection is an eco-friendly singlet that's perfect for climbers seeking comfort, style, and sustainability. Made from organic cotton with a touch of elastane, it offers just the right amount of stretch for active movement. The fabric is soft and pleasant to the touch, providing a comfortable fit that allows you to focus on your climb. This singlet comes in bright pastel colors and features a discreet climbing design, making

it a stylish addition to your climbing gear. Upgrade your gear and climb with confidence knowing you're making an eco-friendly choice.



WOMEN'S COMFORTABLE ORGANIC SINGLET

FABRIC

MAIN: 95% organic cotton 5% elastane

breathable, stretch, organic

INFO

fit: straight
size: 34-42

SIZE 36
weight: 85 g
back length: 59 cm

FEATURES

- eco friendly fabric
- prints variation
- wide racerback



evening primrose
10041499RFX



india ink
10041500RFX



brittany blue
10041498RFX



DĚČÍNSKÝ SNĚŽNÍK, CZECH REPUBLIC

Our new eco-friendly t-shirt is the perfect addition to your climbing wardrobe. Made with a blend of organic cotton and elastane, this t-shirt offers just the right amount of stretch for a comfortable and unrestricted climb. The fabric is soft and pleasant to the touch, making it a comfortable choice for all-day climbing sessions. It comes in bright pastel colors with a discreet climbing design, giving you a stylish

and sustainable option for your next climb. Upgrade your gear and climb with confidence knowing you're making an eco-friendly choice.



WOMEN'S COMFORTABLE ORGANIC SHORT SLEEVE TEE

FABRIC

MAIN: 95% organic cotton 5% elastane

breathable, stretch, organic, soft

INFO

fit: regular
size: 34-42

SIZE 36
weight: 142 g
back length: 62 cm

FEATURES

- eco friendly fabric
- prints variation



evening primrose
10041586RFX

india ink
10041587RFX

brittany blue
10041585RFX



ARCO, ITALY

This women's awesome leisure dress look interesting thanks to its attractive two-colour design. Its contrasting pocket can hold several small items, and it's an attention-getter too. The comfortable fit makes the dress perfect both for relaxing after a climb, and for leisure and the city. As most

our T-shirts, this dress is also made from organic cotton – an environmentally-friendly material that is breathable and pleasant to the touch.





WOMEN'S STYLISH TEE DRESS

FABRIC

MAIN: 95% organic cotton 5% elastane

breathable, organic, stretch

INFO

fit: regular
size: 34-42

SIZE 36
weight: 185 g
length: 88 cm

FEATURES

- breathable
- patched pocket
- raw edge neck



evening primrose/avocado/ink
10041614RFX

india ink/avocado
10041615RFX



Rafiki Jay is a great choice for all the girls looking for a comfortable design T-shirt which reflects their

personality. It's made of organic cotton and comes in appealing colours with unique prints.



WOMEN'S COMFORTABLE ORGANIC SHORT SLEEVE TEE

FABRIC

MAIN: 100% organic cotton

breathable, organic, soft

INFO

fit: regular
size: 32-42

SIZE 36
weight: 98 g
back length: 60 cm

FEATURES

- eco friendly fabric
- prints variation
- wider neck opening
- raw edge neck and sleeve hems



india ink
10041553RFX

lemon verbena
10041554RFX

hot coral
10041552RFX

carmine
10041550RFX

peacock blue
10041555RFX

ensign blue
10041551RFX



ARCO, ITALY

If you are looking for a light organic cotton t-shirt, look no more - Akiyo is your go to choice. The soft, light and comfortable material makes it perfect for everyday wear, while the climbing-inspired designs in bright pastel colors will make you stand out. This shirt is not only stylish, but also perfect for any climbing trip or gym session. Made from sustainable materials, it's an eco-friendly choice that you can feel

good about. Whether you're an experienced climber or a casual gym-goer, this t-shirt is the perfect addition to your wardrobe.



WOMEN'S LIGHTWEIGHT ORGANIC SHORT SLEEVE TEE

FABRIC

MAIN: 100% organic cotton

breathable, lightweight, organic

INFO

fit: regular
size: 34-44

SIZE 36
weight: 90 g
back length: 61 cm

FEATURES

- eco friendly fabric
- prints variation



carmine
10041486RFX

india ink
10041487RFX

peacock blue
10041488RFX



MANDALA BOULDERHALLE, GERMANY

Perfect choice for those hot summer days. Made from a blend of cotton and linen, this shirt is comfortable to wear and will keep you cool even in the warmest weather. The light cream color makes it a versatile choice for everyday wear or outdoor activities. The shirt features a handy chest pocket and is designed to be light and breathable, so you

can wear it on rest days or during your climbing adventures. Upgrade your summer wardrobe with this stylish and practical shirt.





WOMEN'S LIGHTWEIGHT LONG SLEEVE SHIRT

FABRIC

MAIN: 55% linen 45% cotton

breathable, quick dry, light weight

INFO

fit: regular
size: 34-42

SIZE 36
weight: 175 g
back length: 69 cm

FEATURES

- button up shirt
- chest pockets with single button closure
- adjustable button cuffs
- back single plead
- button down collar
- curved low hem
- shaped fit
- lightweight and comfortable
- eco friendly fabric



tidal foam
10041621RFX

ensign blue
10041620RFX



ARCO, ITALY

Estrella is a light and breathable sweatshirt made from organic cotton that is easy to climb in. The use of elastane keeps it sufficiently stretchy. It's a good choice for both warm-ups and warming up right after a climb. Combing the cotton as a final touch makes the Estrella incredibly soft and pleasant to the touch.

Wear it when you are going to the rocks, bulders or a yoga lesson. Its contrasting hood and drawstrings make sure you will catch the eyes of passerby.



ESTRELLA



WOMEN'S LIGHTWEIGHT WARMUP ORGANIC HOODY

FABRIC

MAIN: 92% organic cotton 8% elastane

breathable, stretch, organic, soft

INFO

fit: regular
size: 34-42

SIZE 36
weight: 265 g
back length: 66 cm

FEATURES

- eco friendly fabric
- hood adjustment
- full area printing



ensign blue/avocado
10041522RFX

celosia orange
10041521RFX

india ink
10041523RFX



DĚČÍNSKÝ SNĚŽNÍK, CZECH REPUBLIC

Introducing our unisex hoodie called Zulu, made with a blend of organic cotton and polyester for a comfortable and durable fit. The creamy colors and light design give this hoodie a stylish look that's perfect for both casual wear and climbing trips. This

hoodie is great for layering and will keep you warm on chilly days at the crag. Its versatile design makes it a great choice for both men and women.



UNI'S WARMUP ORGANIC HOODY

FABRIC

MAIN: 85% organic cotton 15% polyester
CUFFS: 93% cotton 7% elastane

breathable, organic

INFO

fit: regular
size: XS-XXL

SIZE M
weight: 551 g
back length: 70 cm

FEATURES

- eco friendly fabric
- main kangaroo pocket
- ribbed sleeve cuffs
- ribbed bottom hem
- hood adjustment



cress green
10041648RFX

plum wine
10041650RFX

india ink
10041649RFX

brindle
10041647RFX



CÈÙSE, FRANCE

Rafiki Vella are light women's sports shorts designed not only for bouldering. They fit perfectly thanks

to the elastic material and wide elastic waist which means you are not limited in any way.



VELLA



WOMEN'S SUPER LIGHTWEIGHT MULTISPORT SHORTS

FABRIC

MAIN: 94% polyamide 6% elastane
CUFF: 88% polyester 12% spandex

breathable, lightweight, stretch,
quick dry

INFO

fit: straight
size: 34-40

SIZE 36
weight: 100 g
inseam length: 10 cm

FEATURES

- wide elastic waistband
- waist internal drawcord
- back pocket
- split detail at side seam



rose wine
10041641RFX

brittany blue
10041638RFX

india ink
10041639RFX

jadesheen
10041640RFX



ANDALUSIA, SPAIN

It's not just guys who want bouldering shorts with wide legs. The NOIA climbing shorts are here for girls and women who don't want to buy our men's shorts for their training anymore and there were not a few

of you... For all those who have been missing this piece for a long time, we have created these boy-fit climbing shorts.





WOMEN'S SUPER LIGHTWEIGHT MULTISPORT SHORTS

FABRIC

MAIN: 94% polyamide 6% elastane
CUFF: 88% polyester 12% spandex

breathable, lightweight, stretch,
quick dry

INFO

fit: boyfriend
size: 32-42

SIZE 36
weight: 120 g
inseam length: 20 cm

FEATURES

- wide elastic waistband
- waist internal drawcord
- back pocket
- gusset for freedom of movement
- toothbrush loops



rose wine
10041609RFX

brittany blue
10041606RFX

india ink
10041607RFX

jadesheen
10041608RFX



ARCO, ITALY

This is a practical climbing skirt with shorts inside for every woman who loves bouldering. Breathable, quick-drying, light and flexible – everything you want for a climb. The wide waist cuff holds this skirt in place so a climber can do everything she loves with maximum freedom of motion. An interior thigh

pocket provides a place for small items like keys and a phone. This great-looking climbing skirt should be there in every backpack.





WOMEN'S SUPER LIGHTWEIGHT MULTISPORT SKORT

FABRIC

MAIN: 94% polyamide 6% elastane
CUFF: 88% polyester 12% elastane

breathable, lightweight, stretch,
quick dry

INFO

fit: straight
size: 34-42

SIZE 36
weight: 180 g
skirt side seam: 35 cm
shorts inseam: 13 cm

FEATURES

- wide elastic waistband
- integrated shorts
- secret thigh pocket



rose wine
10041569RFX

brittany blue
10041567RFX

india ink
10041568RFX



DĚČÍNSKÝ SNĚŽNÍK, CZECH REPUBLIC

The women's 3/4 Tarragona trousers will catch your attention at first sight. The inspiration comes from a Spanish climbing area. We've used an ultra-light material which is breathable and quick-drying. Whether you prefer climbing, bouldering or yoga, you'll grow fond of their comfortable fit

with set-in gores which won't restrict any movement. A wide elastic waist keeps the trousers at place even when you eat a tortilla more then you should. So, hasta la vista.



TARRAGONA



WOMEN'S SUPER LIGHTWEIGHT MULTISPORT CAPRI PANTS

FABRIC

MAIN: 94% polyamide 6% elastane
CUFF: 88% polyester 12% spandex

breathable, lightweight, stretch,
quick dry

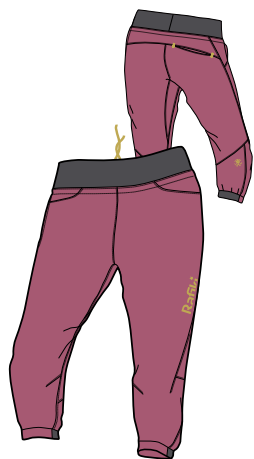
INFO

fit: straight
size: 34-42

SIZE 36
weight: 170 g
inseam length: 49 cm

FEATURES

- wide elastic waistband
- waist internal drawcord
- gusset for freedom of movement
- preshaped knees
- half cuffs at bottom legs



rose wine
10041634RFX



brittany blue
10041631RFX



india ink
10041632RFX



jadesheen
10041633RFX



DĚČINSKÝ SNĚŽNÍK, CZECH REPUBLIC

Rafiki Femio are light climbing trousers from new durable and quick-drying material. Thanks to the elastic waist and leg endings they fit all types of body shapes. They are designed for all kinds

of climbing both indoor and outdoor or you can pack them up with you whether you go to a slackline park or a yoga lesson.



FEMIO



WOMEN'S SUPER LIGHTWEIGHT MULTISPORT PANTS

FABRIC

MAIN: 94% polyamide 6% elastane
CUFF: 88% polyester 12% spandex

breathable, lightweight, stretch,
quick dry

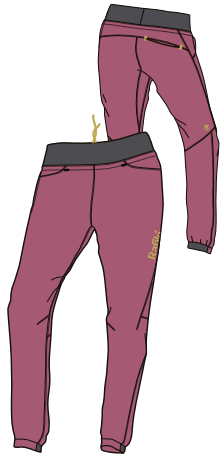
INFO

fit: straight
size: 34-42

SIZE 36
weight: 220 g
inseam length: 80 cm

FEATURES

- wide elastic waistband
- waist internal drawcord
- hands and back pockets
- gusset for freedom of movement
- preshaped knees
- half elastic cuffs at bottom legs



rose wine
10041526RFX



brittany blue
10041524RFX



india ink
10041525RFX



DĚČÍNSKÝ SNĚŽNÍK, CZECH REPUBLIC

Muriel are women's climbing shorts that are a must-have in the wardrobe of every keen climber. They look quite casual, yet they won't let you down when climbing. They're breathable, flexible - just awesome. The wide waist cuff and diamond crotch provide maximum comfort and don't restrict

movement. In these shorts, you'll feel great both during training and on an actual climb. The brush loops on the thigh are an interesting detail.



MURIEL



WOMEN'S SOLID PERFORMANCE CLIMBING SHORTS

FABRIC

MAIN: 97% cotton 3% elastane
CUFF: 88% polyester 12% elastane

breathable, stretch, durable

INFO

fit: straight
size: 32-42

SIZE 36
weight: 215 g
inseam length: 24 cm

FEATURES

- wide convertible waistband with internal drawcord
- 2 front pockets
- 2 rear patch pockets
- gusset for freedom of movement
- toothbrush loops



cress green II
10041600RFX



brittany blue
10041598RFX



india ink
10041601RFX



phlox
10041602RFX



celosia orange
10041599RFX



ANDALUSIA, SPAIN

These women's climbing trousers are subdued, breathable and resilient. Their narrowed fit is very comfortable, in part due to the flexible material used. They're just about made for climbing. Naturally they include features like a wide and comfortable waist cuff, a diamond crotch, shaped knees and legs with elastic in the back to hold them fast above

the ankle. What more could you wish for out on the rocks? Their loops for holding a large or small brush are an attractive element as well.





WOMEN'S SOLID PERFORMANCE CLIMBING PANTS

FABRIC

MAIN: 97% cotton 3% elastane
CUFF: 88% polyester 12% elastane

breathable, stretch, durable

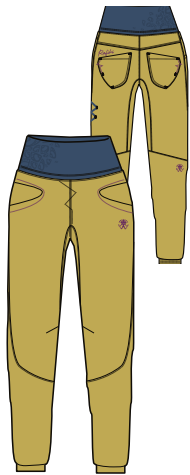
INFO

fit: straight
size: 34-42

SIZE 36
weight: 315 g
inseam length: 80 cm

FEATURES

- wide convertible waistband with internal drawcord
- 2 front pockets
- 2 rear patch pockets
- gusset for freedom of movement
- preshaped knees
- elastic back low leg
- toothbrush loops



cress green II
10041578RFX



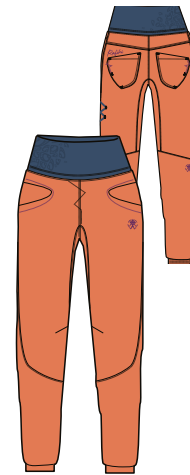
brittany blue
10041576RFX



india ink
10041579RFX



phlox
10041580RFX



celosia orange
10041577RFX



Cotton climbing trousers with a more informal look, which are sophisticated to the smallest detail. Their strengths include a comfortable and breathable Rafiki elastic waistband, drawstring waist and legs, stylish stitching or a brush pouch. They'll suitable for everyday wear as well as for climbing, as Geminis are the successor of a successful and popular model.

We have prepared them in several colours, so every climber can choose the right ones to reflect her personality or perhaps her mood.



GEMINIS



WOMEN'S SOLID PERFORMANCE CLIMBING PANTS

FABRIC

MAIN: 97% cotton 3% elastane
CUFF: 88% polyester 12% spandex

breathable, stretch, durable,
YKK zippers

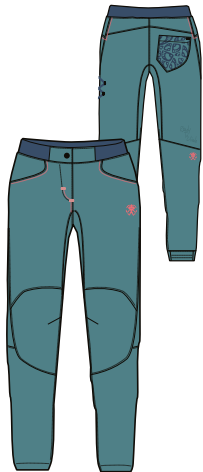
INFO

fit: straight
size: 34-42

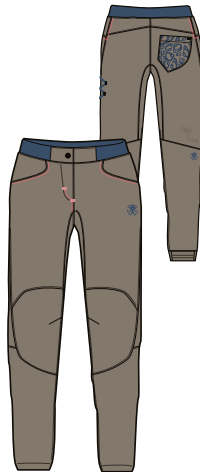
SIZE 36
weight: 300 g
inseam length: 78 cm

FEATURES

- YKK fly opening
- partly elastic waistband
- 2 front pockets
- 1 rear patch pocket
- gusset for freedom of movement
- ergonomic pre shaped knees
- half elastic cuffs at bottom legs
- toothbrush loops



brittany blue
10041531RFX



brindle
10041530RFX



india ink
10041532RFX



ARCO, ITALY

Meet the ultimate woman summer climbing shorts - Juno. Made from a combination of linen, cotton and spandex, these shorts are perfect for hot weather. The breathable linen fabric will keep you cool and comfortable, while the partly elastic waistbelt ensures a perfect fit. With their naturally worn look and lightweight feel, you'll want to wear

them all summer long. Plus, the convenient back pockets means you can bring along your essentials on your climb. Upgrade your summer climbing gear with Juno shorts.





WOMEN'S CLIMBING SHORTS FOR ALL DAY COMFORT

FABRIC

MAIN: 54% linen 44% cotton 2% elastane
 CUFF: 93% cotton 7% elastane

breathable, stretch, quick dry

INFO

fit: straight
 size: 34-42

SIZE 36
 weight: 235 g
 inseam length: 20 cm

FEATURES

- YKK fly opening
- partly elastic adjustable drawcord waistband
- 2 front pockets
- 2 rear patch pockets
- gusset for freedom of movement



plum wine
 10041558RFX

india ink
 10041557RFX

brittany blue
 10041556RFX



DĚČÍNSKÝ SNĚŽNÍK, CZECH REPUBLIC

Our Shiva women climbing trousers are the perfect choice for hot summer weather. Made from a combination of linen, cotton, and spandex, they are lightweight, comfortable, and breathable. The linen material provides a naturally worn look while keeping you cool. With a partly elastic waistbelt and a zip fly, these trousers offer a perfect fit for any body shape. Plus, the convenient back pockets means you can bring

along your essentials on your climb. Whether you're bouldering or sport climbing, the Shiva trousers will keep you comfortable and stylish on the rock.





WOMEN'S CLIMBING PANTS FOR ALL DAY COMFORT

FABRIC

MAIN: 54% linen 44% cotton 2% elastane
 CUFF: 93% cotton 7% elastane

breathable, stretch, quick dry

INFO

fit: straight
 size: 34-42

SIZE 36
 weight: 380 g
 inseam length: 78 cm

FEATURES

- YKK fly opening
- partly elastic adjustable drawcord waistband
- 2 front pockets
- 1 rear pocket
- thigh pocket
- gusset for freedom of movement
- preshaped knees
- toothbrush pocket
- elastic back low leg



plum wine
 10041624RFX



india ink
 10041623RFX



brittany blue
 10041622RFX



ANDALUSIA, SPAIN

Women's denim shorts in Rafiki style, which at first glance impress with the unique Rafiki design and decoration. They're great for going out, hitting the wall or going to work or school. But don't worry

at all - they're designed to take on the toughest climbing challenge or a wobbly slackline in the park. So get out there.



FALAISES



WOMEN'S LIGHTWEIGHT DENIM SHORTS FOR ALL DAY COMFORT

FABRIC

MAIN: 64% cotton 29,5% polyester
3,5% rayon 2,5% elastane
CUFF: 88% polyester 12% elastane

breathable, lightweight, stretch,
quick dry

INFO

fit: straight
size: 34-42

SIZE 36
weight: 160 g
inseam length: 8 cm

FEATURES

- wide elastic waistband
- 2 front pockets
- 1 rear patch pocket
- roll-up shorts



denim
10029673RFX



MANDALA BOULDERHALLE, GERMANY

The Chain Capri women's climbing trousers have a look that blends in and lets you wear them equally well out to the cliffs and boulders or into the city. They're made from an ultra-light denim that's flexible, breathable and quick-drying. The wide waist cuff on these trousers makes them a good fit, and their diamond crotch lets you move freely. With their

doubled shaped knees, you can lean onto a rough cliff face problem-free. Their leg cuffs are elastic in back. Their decorative brush loop is another attractive detail.



CHAIN CAPRI



WOMEN'S LIGHTWEIGHT DENIM CLIMBING CAPRI PANTS FOR ALL DAY COMFORT

FABRIC

MAIN: 64% cotton 29,5% polyester
3,5% rayon 2,5% elastane
CUFF: 88% polyester 12% elastane

breathable, lightweight, stretch,
quick dry

INFO

fit: straight
size: 34-42

SIZE 36
weight: 275 g
inseam length: 48 cm

FEATURES

- wide elastic waistband
- 2 front pockets
- 2 rear patch pockets
- gusset for freedom of movement
- double preshaped knee parts
- elastic back low leg
- toothbrush loops



denim
10020010RFX



DĚČÍNSKÝ SNĚŽNÍK, CZECH REPUBLIC

The trousers look fine on the street, yet they're also an ideal partner on the rocks. Their ultra-light denim is flexible, breathable and quick-drying. The fairly wide waist cuff ensure these trousers are a good fit. Their diamond crotch won't limit your motion and doubled shaped knees can deal with even rough treatment on the rocks. The bottom cuff is partially

elastic in the back, so from the front, these trousers look like normal skinny jeans. One more attractive detail is the brush pocket that acts as a frill in its own right.



CHAIN



WOMEN'S LIGHTWEIGHT DENIM CLIMBING PANTS FOR ALL DAY COMFORT

FABRIC

MAIN: 64% cotton 29,5% polyester
3,5% rayon 2,5% elastane
CUFF: 88% polyester 12% elastane

breathable, lightweight, stretch,
quick dry

INFO

fit: straight
size: 34-42

SIZE 36
weight: 335 g
inseam length: 80 cm

FEATURES

- wide elastic waistband
- 2 front pockets
- 2 rear patch pockets
- gusset for freedom of movement
- double preshaped knee parts
- elastic back low leg
- toothbrush loops



denim
10020011RFX





RAFIKI MEN



MANDALA BOULDERHALLE, GERMANY

Lightweight and breathable monochrome Rafiki T-shirt in earthy colours inspired by the mixed forests around the popular sandstone rocks in the Broumov region. The environmentally sustainable Lenzing

Modal material is its main advantage. It is definitely a piece you'll love for training, going to the rocks and work. It's up to you which way you choose to go.



ZONE



MEN'S PERFORMANCE LIGHTWEIGHT SHORT SLEEVE TEE

FABRIC

MAIN: 50% modal lenzing 50% organic cotton

breathable, lightweight, stretch, soft, wicking

INFO

fit: straight
size: S-XXL

SIZE M
weight: 135 g
back length: 69 cm

FEATURES

- eco friendly fabric
- natural touch



india ink
10041646RFX

aquifer
10041645RFX



ARCO, ITALY

Introducing our lightweight singlet for men, made with an eco-friendly blend of organic cotton and elastane to provide the perfect stretch for any active movement. Our team of climbers asked for its return to our collection, and we listened. The material is soft and comfortable to wear, and the bright colors with original climbing designs make it stand out. It even

includes a handy chest pocket for your essentials. Wear it on rest days or during your climbing sessions, and it won't disappoint.





MEN'S COMFORTABLE ORGANIC SINGLET

FABRIC

MAIN: 95% organic cotton 5% elastane

breathable, stretch, organic, soft

INFO

fit: straight
size: S-XL

SIZE M
weight: 128 g
back length: 65 cm

FEATURES

- eco friendly fabric
- prints variation
- chest pocket



avocado
10041625RFX

evening primrose
10041627RFX

brittany blue
10041626RFX



DĚČÍNSKÝ SNĚŽNÍK, CZECH REPUBLIC

Introducing our new men's t-shirt, made with a blend of organic cotton and elastane for a comfortable and stretchy fit. The material is soft and pleasant to the touch, while the bright colors and distinctive climbing design add a touch of style to your look. With a handy chest pocket, this t-shirt is perfect

for both rest days and climbing trips. Lightweight and breathable, it will keep you comfortable all day long, no matter where your adventures take you.





MEN'S COMFORTABLE ORGANIC SHORT SLEEVE TEE

FABRIC

MAIN: 95% organic cotton 5% elastane

breathable, stretch, organic, soft

INFO

fit: regular
size: XS-XXL

SIZE M
weight: 165 g
back length: 68 cm

FEATURES

- eco friendly fabric
- prints variation



avocado
10041536RFX

brittany blue
10041537RFX

india ink
10041538RFX



MANDALA BOULDERHALLE, GERMANY

Successor of an immensely popular Slack with slightly improved fit. Introducing Arcos, men's t-shirt made from 100% organic cotton, offering a comfortable and soft feel on the skin. Available in a wide range of colors accompanied with designs that not only have climbing as an inspiration, but go even further. We started with Frankenjura and used the famous routes as an inspiration for the story - who would not like to take an action in the action direct and finish it successfully, or have a try on chasin the tranee

in the footsteps of no other than famous Johna Bachar? This shirt is perfect for those who want to express their love for the sport.



MEN'S ORGANIC SHORT SLEEVE TEE

FABRIC

MAIN: 100% organic cotton

breathable, lightweight, organic

INFO

fit: regular
size: XS-XXL

SIZE M
weight: 135 g
back length: 68 cm

FEATURES

- eco friendly fabric
- prints variation



brittany blue
10041493RFX

avocado
10041492RFX

red clay
10041497RFX

ensign blue
10041494RFX

india ink
10041496RFX

iced coffee
10041495RFX



ARCO, ITALY

Introducing the Granite T-Shirt for men, made with 100% organic cotton that is both eco-friendly and breathable. The material is soft to the touch and comfortable to wear on any climbing trip. With an original combination of colors on the sleeves, paired with a distinctive climbing design, this

t-shirt is perfect for those who want to stand out. Whether you're on a rest day or pushing your limits on the rock, the Granite T-Shirt will be your go-to choice.



GRANITE

NEW



MEN'S LIGHTWEIGHT ORGANIC SHORT SLEEVE TEE

FABRIC

MAIN: 100% organic cotton

breathable, lightweight, organic

INFO

fit: regular
size: XS-XXL

SIZE M
weight: 116 g
back length: 68 cm

FEATURES

- eco friendly fabric
- prints variation



ensign blue/ink
10041540RFX

red clay/ink/brittany
10041541RFX

brittany blue/ink/clay
10041539RFX



MANDALA BOULDERHALLE, GERMANY

Piton is a Rafiki tee using a functional combination of recycled polyester and Tencel. It is a lightweight material that wicks moisture and can cool you down in summer and warm you up in winter. And it is incredibly soft, it feels like natural fibre under your fingers – after all, men deserve some care, too, don't they? The tee features all-over print

and you'll appreciate it both when you're climbing and as everyday wear. High-five to the best version of yourself.



PITON



MEN'S STYLISH PERFORMANCE T-SHIRT

FABRIC

MAIN: 82% recycled polyester 14% tencel
4% elastane

breathable, lightweight, stretch,
quick dry

INFO

fit: regular
size: S-XL

SIZE M
weight: 145 g
back length: 69 cm

FEATURES

- eco friendly fabric
- functional fabric
- natural touch
- full area print



Rust
10029728RFX

Boreal
10029726RFX



MANDALA BOULDERHALLE, GERMANY

Perfect choice for those hot summer days. Made from a blend of cotton and linen, this shirt is comfortable to wear and will keep you cool even in the warmest weather. The light cream color makes it a versatile choice for everyday wear or outdoor activities. The shirt features two handy chest pockets and is designed to be light and breathable, so you

can wear it on rest days or during your climbing adventures. Upgrade your summer wardrobe with this stylish and practical shirt.





MEN'S LIGHTWEIGHT SHORT SLEEVE SHIRT

FABRIC

MAIN: 55% linen 45% cotton

breathable, quick dry, lightweight

INFO

fit: regular
size: S-XL

SIZE M
weight: 158 g
back length: 74 cm

FEATURES

- eco friendly fabric
- button up shirt
- chest pockets with single button closure
- button down collar
- lightweight and comfortable



tidal foam
10041549RFX

ensign blue
10041548RFX



DĚČINSKÝ SNĚŽNÍK, CZECH REPUBLIC

Climbers will most appreciate this light and breathable sweatshirt made from organic cotton during warmup exercises or while warming back up after a climb. But you can also climb in it, and the use of elastane keeps it sufficiently flexible. The practical

thumb loop will never cut into you or pull at you. The high-contrast hood and drawstrings immediately hint at the original Rafiki style.



TRAVERSE



MEN'S LIGHTWEIGHT WARMUP ORGANIC HOODY

FABRIC

MAIN: 92% organic cotton 8% elastane

breathable, stretch, organic, soft

INFO

fit: regular
size: XS-XXL

SIZE M
weight: 320 g
back length: 78 cm

FEATURES

- eco friendly fabric
- hood adjustment
- distinct Rafiki sign
- Organic Cotton



avocado/ink
10041635RFX

ensign blue/ink
10041636RFX

india ink
10041637RFX



DĚČÍNSKÝ SNĚŽNÍK, CZECH REPUBLIC

Introducing our unisex hoodie called Zulu, made with a blend of organic cotton and polyester for a comfortable and durable fit. The creamy colors and light design give this hoodie a stylish look that's perfect for both casual wear and climbing trips. This

hoodie is perfect for layering and will keep you warm on chilly days at the crag. Its versatile design makes it a great choice for both men and women.



UNI'S WARMUP ORGANIC HOODY

FABRIC

MAIN: 85% organic cotton 15% polyester
CUFFS: 93% cotton 7% elastane

breathable, organic

INFO

fit: regular
size: XS-XXL

SIZE M
weight: 551 g
back length: 70 cm

FEATURES

- eco friendly fabric
- main kangaroo pocket
- ribbed sleeve cuffs
- ribbed bottom hem
- hood adjustment



cress green
10041648RFX

plum wine
10041650RFX

india ink
10041649RFX

brindle
10041647RFX



MANDALA BOULDERHALLE, GERMANY

Rafiki Lead are men's climbing shorts from our technical ultralight programme. They are made from light, durable and quick-drying material. These shorts

are just a must-have for hot days in the mountains or indoor bouldering.



LEAD II



MEN'S SUPER LIGHTWEIGHT MULTISPORT SHORTS

FABRIC

MAIN: 94% polyamide 6% elastane

breathable, lightweight, stretch,
quick dry

INFO

fit: regular
size: XS-XL

SIZE M
weight: 180 g
length: 31 cm

FEATURES

- elastic waistband
- waist internal drawcord
- side pockets + 1 rear pocket
- full inseam gusset for freedom of movement
- back loop detail



india ink
10041565RFX

red clay
10041566RFX

avocado
10041563RFX

brittany blue
10041564RFX



MANDALA BOULDERHALLE, GERMANY

Rafiki Moonstone are light and airy 3/4 climbing trousers with the elastic waist which are ideal for those who prefer 3/4 trousers for climbing. They have a small pocket and a loop for a brush, a chalk bag hanging loop and a waist and leg endings drawstrings.



MOONSTONE



MEN'S SUPER LIGHTWEIGHT MULTISPORT CAPRI PANTS

FABRIC

MAIN: 94% polyamide 6% elastane

breathable, lightweight, stretch,
quick dry

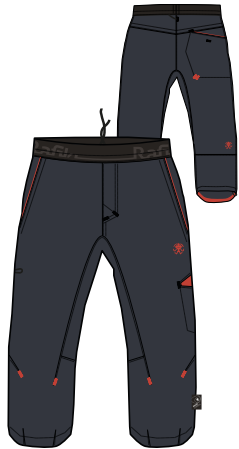
INFO

fit: straight
size: XS-XL

SIZE M
weight: 220 g
inseam length: 47 cm

FEATURES

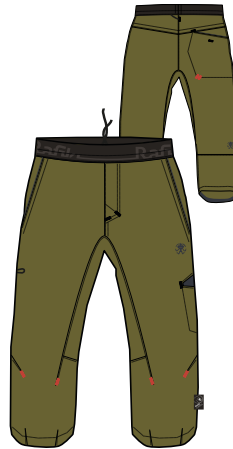
- elastic waistband
- waist internal drawcord
- hand pockets + 1 rear pocket
- gusset for freedom of movement
- ergonomic pre shaped knees
- brush loop and pocket
- bottom leg drawstring regulation
- back loop detail



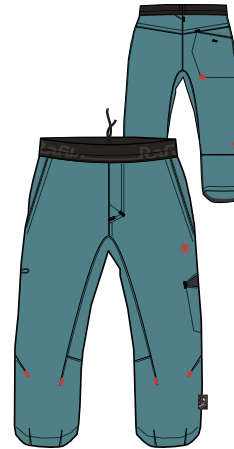
india ink
10041596RFX



red clay
10041597RFX



avocado
10041594RFX



brittany blue
10041595RFX



DĚČINSKÝ SNĚŽNÍK, CZECH REPUBLIC

Rafiki Drive are light and airy climbing trousers with the elastic waist which are ideal for rope climbing, indoor bouldering or yoga. They have a small pocket and a loop for a brush, a chalk bag hanging loop and a waist drawstring.



DRIVE



MEN'S SUPER LIGHTWEIGHT MULTISPORT PANTS

FABRIC

MAIN: 94% polyamide 6% elastane

breathable, lightweight, stretch,
quick dry

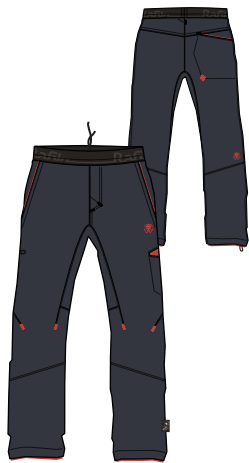
INFO

fit: straight
size: XS-XL

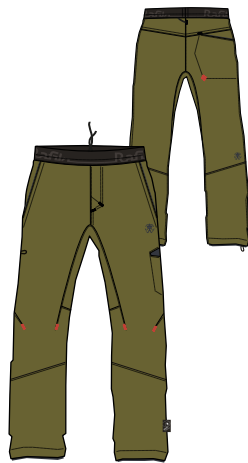
SIZE M
weight: 265 g
inseam length: 82 cm

FEATURES

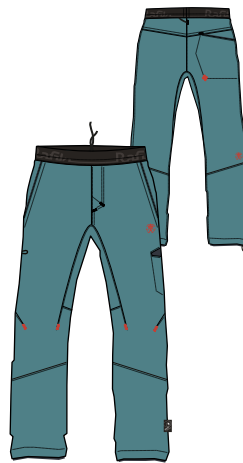
- elastic waistband
- waist internal drawcord
- hand pockets + 1 rear pocket
- gusset for freedom of movement
- ergonomic pre shaped knees
- brush loop and pocket
- bottom leg drawstring regulation
- back loop detail



india ink
10041517RFX



avocado
10041515RFX



brittany blue
10041516RFX



ARCO, ITALY

Our popular Anuk climbing shorts are back and better than ever. Due to multiple requests, we've brought back this bestseller, now with an upgraded and improved fit. Made with a blend of cotton and elastane, these shorts are lightweight and comfortable, perfect for all your climbing adventures. The fake fly adds a touch of style while the back pocket keeps your essentials close by. Get ready to tackle your next climb in the updated

Anuk climbing shorts. In our collection they are just in the middle between Lead II and Crux, being the perfect combination of performance and civil style.



MEN'S CLIMBING SHORTS

FABRIC

MAIN: 97% cotton 3% elastane

breathable, durable, stretch

INFO

fit: regular
size: S-XXL

SIZE M
weight: 215 g
inseam length: 31 cm

FEATURES

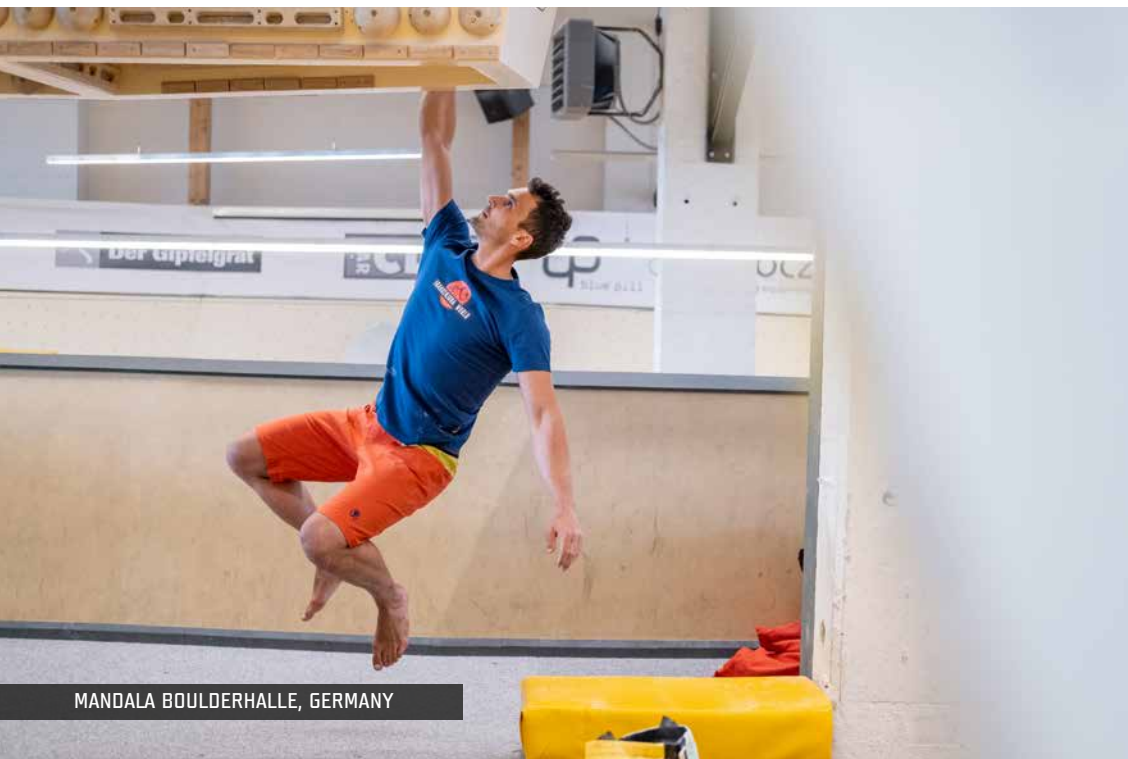
- elastic waistband
- 1 rear pocket
- gusset for freedom of movement



cress green/ink
10041490RFX

india ink/avocado
10041491RFX

brittany blue/ink
10041489RFX



MANDALA BOULDERHALLE, GERMANY

Rafiki Megos are men's climbing shorts which are a must-have for all bouldering enthusiasts. Cotton with elastane, the elastic waist and a time-proven fit guarantee you can fully rely on these shorts whatever you do.



MEGOS



MEN'S SOLID PERFORMANCE CLIMBING SHORTS FOR ALL DAY COMFORT

FABRIC

MAIN: 97% cotton 3% elastane

breathable, durable, stretch

INFO

fit: regular
size: XS-XL

SIZE M
weight: 225 g
inseam length: 31 cm

FEATURES

- elastic waistband with internal drawcord
- hand pockets
- full inseam gusset for freedom of movement
- side pockets for brush
- back loop detail



cress green/ensign
10041582RFX

ensign blue/clay
10041583RFX

avocado/ensign
10041581RFX

red clay/cress
10041584RFX



ARCO, ITALY

Looking for a universal pair of shorts you can wear anywhere anytime without looking like a stray mountaineer? You've just found them. The men's low-key Crux shorts in restrained colours have a classic fly and can be easily combined with any T-shirt you like wearing to work. If you take a closer look, you'll notice many improvements that every passionate climber will love. They are made of a combination of cotton and elastane. This tougher and durable material with great tensile strength can

withstand even rough handling. An added gusset gives you more freedom of movement. The shorts have four spacious pockets and the fifth one is specially designated for a toothbrush. It's cleverly hidden on a side, as a part of a main pocket. How cool is that? You can wear the Crux shorts all day long, no matter if you are going to grab a beer, slacklining in a park or climbing up your favourite rock route.



MEN'S ALL DAY COMFORT CLIMBING SHORTS

FABRIC

MAIN: 97% cotton 3% elastane

breathable, durable, stretch, YKK zippers

INFO

fit: regular
size: S-XXL

SIZE M
weight: 325 g
inseam length: 31 cm

FEATURES

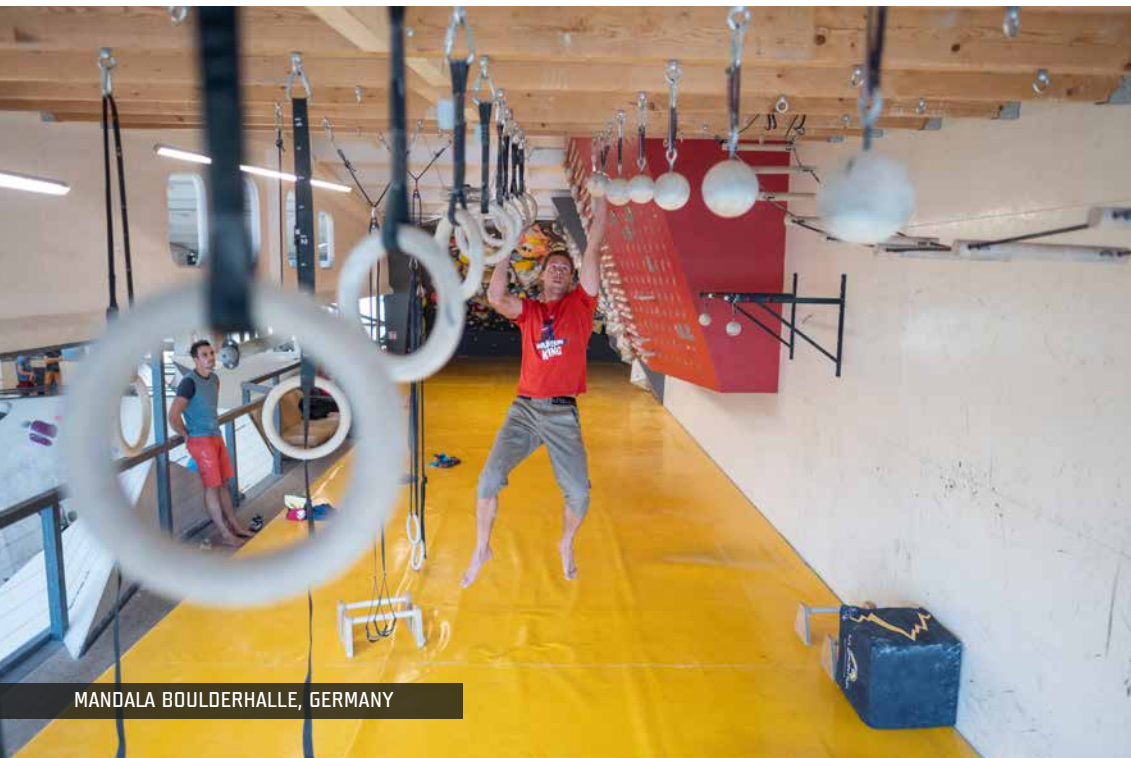
- 2 front top entry pockets
- 2 rear pockets
- side pocket
- partly elastic adjustable drawcord waistband
- gusset for freedom of movement
- waistbelt loops
- brush pocket



brindle/ink
10041512RFX

india ink/ensign
10041514RFX

brittany blue/ink
10041513RFX



MANDALA BOULDERHALLE, GERMANY

Rafiki's three-quarter shorts. Rafiki Cliffbase are an innovation in the men's collection that will not balk at any climbing challenge. Cotton elastic shorts with elastic in the waist line are suitable not only on the sand or on the wall but also for everyday casual wear.



CLIFFBASE



MEN'S PERFORMANCE CLIMBING CAPRI PANTS

FABRIC

MAIN: 97% cotton 3% elastane

breathable, durable, stretch, YKK zippers

INFO

fit: regular
size: XS-XL

SIZE M
weight: 280 g
inseam length: 47 cm

FEATURES

- partly elastic waistband with drawcord
- 2 front pockets
- 1 rear pocket
- gusset for freedom of movement
- Velcro fly opening
- ergonomic pre shaped knees
- brush loop and pocket



brindle
10041504RFX

india ink
10041505RFX

red clay
10041506RFX



DĚČÍNSKÝ SNĚŽNÍK, CZECH REPUBLIC

The men's climbing trousers took the best out of the Megos shorts and belong among Rafiki top products. They are function trousers you can wear all day long. The combination of cotton and elastane is firm but stretchy and the trousers are ideal for climbing, with double pre-shaped knees enhancing durability. Thanks to the elaborated fit you have complete freedom of movement. Spacious front pockets can hold all your essentials, a tooth-brush pocket is a must-have and you can easily stow your phone

into a little thigh side zip pocket which you can easily access even when sitting in a harness. The trousers have a fly, elastic waist and belt loops.



CRAG



MEN'S PERFORMANCE CLIMBING PANTS

FABRIC

MAIN: 97% cotton 3% elastane

breathable, durable, stretch, YKK zippers

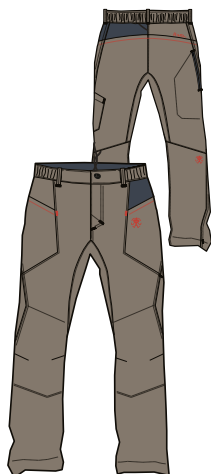
INFO

fit: regular
size: S-XXL

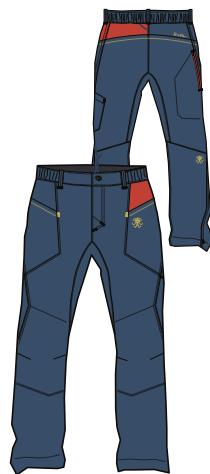
SIZE M
weight: 415 g
inseam length: 83 cm

FEATURES

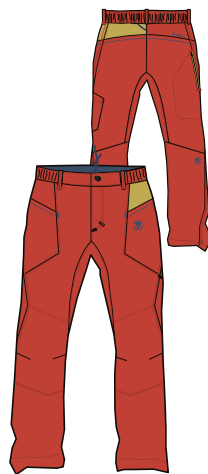
- 2 front top entry pockets
- zippered side pocket
- elastic waistband with regulation
- gusset for freedom of movement
- double knee parts
- waistbelt loops
- low hem with regulation
- brush pocket
- YKK fly opening
- ergonomic pre shaped knees



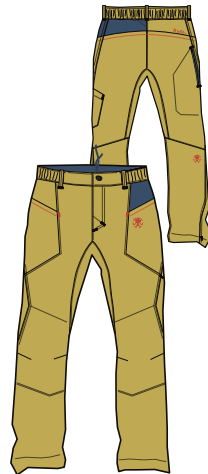
brindle/ink
10041508RFX



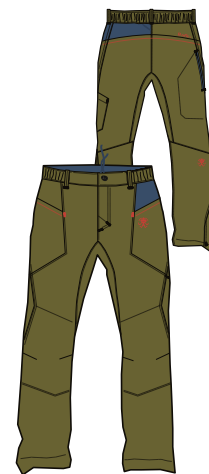
ensign blue/clay
10041510RFX



red clay/cress
10041511RFX



cress green/ensign
10041509RFX



avocado/ensign
10041507RFX



MANDALA BOULDERHALLE, GERMANY

Meet the ultimate man summer climbing shorts - Gnar. Made from a combination of linen, cotton and spandex, these shorts are perfect for hot weather. The breathable linen fabric will keep you cool and comfortable, while the partly elastic waistbelt ensures a perfect fit. With their naturally worn look and lightweight feel, you'll want to wear

them all summer long. Plus, two convenient pockets means you can bring along your essentials on your climb. Upgrade your summer climbing gear with Gnar shorts.





MEN'S CLIMBING SHORTS FOR ALL DAY COMFORT

FABRIC

MAIN: 54% linen 44% cotton 2% elastane
CUFF: 93% cotton 7% elastane

breathable, stretch, quick dry

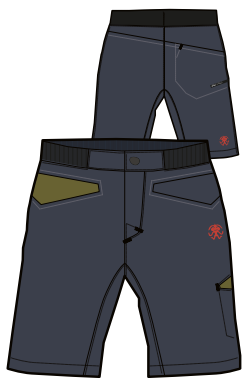
INFO

fit: regular
size: S-XXL

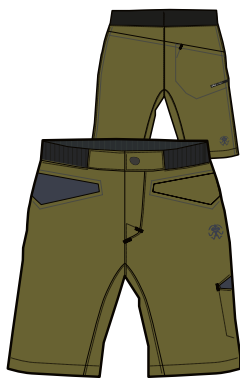
SIZE M
weight: 295 g
inseam length: 30 cm

FEATURES

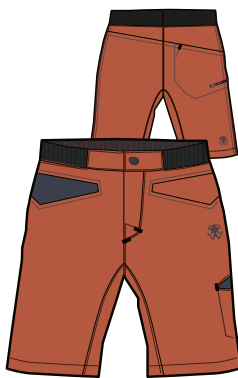
- YKK fly opening
- partly elastic adjustable drawcord waistband
- 2 front pockets
- 1 rear pocket
- gusset for freedom of movement
- toothbrush pocket



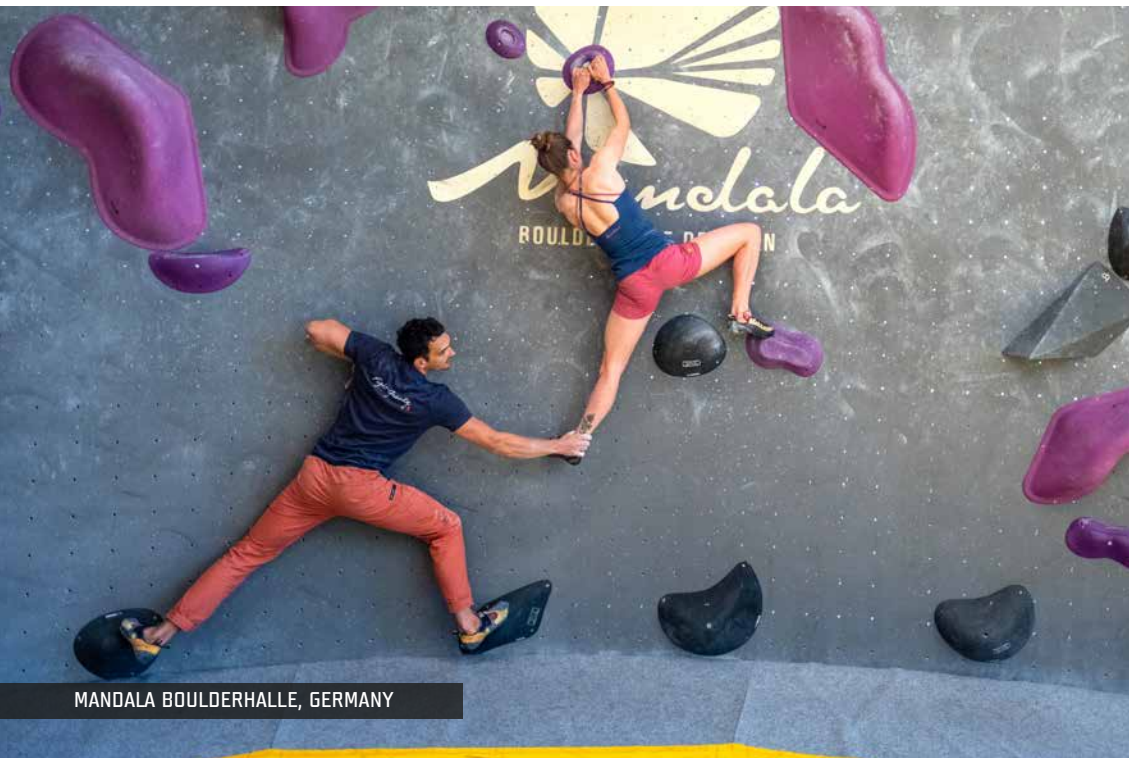
india ink
10041535RFX



avocado
10041534RFX



autumn glaze
10041533RFX



MANDALA BOULDERHALLE, GERMANY

Our new Grip climbing trousers are the perfect choice for hot summer weather. Made from a combination of linen, cotton, and spandex, they are lightweight, comfortable, and breathable. The linen material provides a naturally worn look while keeping you cool. With a partly elastic waistbelt and a zip fly,

these trousers offer a perfect fit for any body shape. Whether you're bouldering or sport climbing, the Grip trousers will keep you comfortable and stylish on the rock.



GRIP

NEW



MEN'S CLIMBING PANTS FOR ALL DAY COMFORT

FABRIC

MAIN: 54% linen 44% cotton 2% elastane
CUFF: 93% cotton 7% elastane

breathable, stretch, quick dry

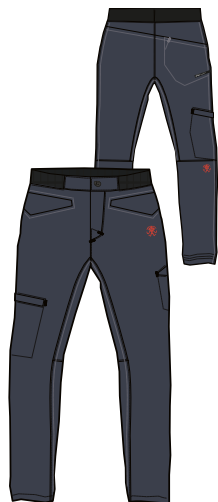
INFO

fit: regular
size: S-XXL

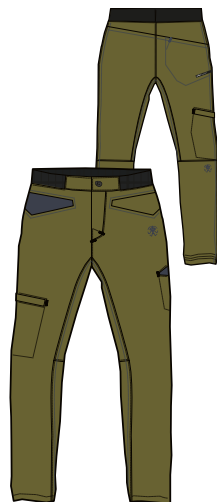
SIZE M
weight: 430 g
inseam length: 80 cm

FEATURES

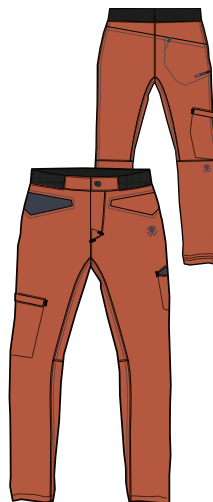
- YKK fly opening
- partly elastic adjustable drawcord waistband
- 2 front pockets
- 1 rear pocket
- thigh pocket
- gusset for freedom of movement
- preshaped knees
- toothbrush pocket
- elastic back low leg



india ink
10041544RFX



avocado
10041543RFX



autumn glaze
10041542RFX



DĚČINSKÝ SNĚŽNÍK, CZECH REPUBLIC

Denim shorts with an elastic waistband that will make you feel good on the wall and dazzle everybody at work. No, really, these are shorts of a proven cut that even our best athletes use. We've added

functional details like a brush pouch and drawstring waistband and sewed them for you in Rafiki denim. Remember, denim doesn't have to be just pants.



BETA



MEN'S LIGHTWEIGHT DENIM CLIMBING SHORTS FOR ALL DAY COMFORT

FABRIC

MAIN: 64% cotton 29,5% polyester
3,5% rayon 2,5% elastane

breathable, lightweight, stretch,
quick dry

INFO

fit: regular
size: S-XXL

SIZE M
weight: 255 g
inseam length: 26 cm

FEATURES

- 2 front pockets
- 1 rear patch pockets
- elastic logo waistband with regulation
- full inseam gusset for freedom of movement
- back waistbelt double loop
- toothbrush pocket



denim
10029652RFX



DĚČÍNSKÝ SNĚŽNÍK, CZECH REPUBLIC

These stylish men's climbing jeans are literally indistinguishable from traditional work trousers. They have an elastic waist, but you'll find belt loops as well. Their diamond crotch and shaped knees guarantee a climber won't have to fear any awkward steps along their way. Naturally a discreet brush pocket is included too. These trousers are deliberately extended in length and can be either rolled up

or shortened as needed using the markings we've provided. This immediately eliminates the problem of overly long trouser legs.



CRIMP



MEN'S LIGHTWEIGHT DENIM CLIMBING PANTS FOR ALL DAY COMFORT

FABRIC

MAIN: 64% cotton 29,5% polyester
3,5% rayon 2,5% elastane

breathable, lightweight, stretch,
quick dry

INFO

fit: straight
size: S-XXL

SIZE M
weight: 405 g
inseam length: 87 cm

FEATURES

- 2 front top entry pockets
- 2 rear patch pockets
- elastic waistband with regulation
- gusset for freedom of movement
- double preshaped knee parts
- waistbelt loops
- toothbrush pocket
- YKK fly opening
- cuttable leg length



denim
10019997RFX





RAFIKI KIDS



To fulfil their potential, boys and girls of the new climbing generation need a quality T-shirt with Rafiki Guy. This children's T-shirt is made of 100% bio

cotton which is incredibly pleasant and light. A big Rafiki Guy front print will encourage your kids next time you take them climbing.



KAILAS JR



KID'S COMFORTABLE ORGANIC SHORT SLEEVE TEE

FABRIC

MAIN: 100% organic cotton

breathable, soft

INFO

fit: regular
size: 128, 140, 152
weight: 95 g
back length: 56 cm

FEATURES

- prints variation



india ink
10041561RFX

carmine
10041560RFX

peacock blue
10041562RFX

avocado
10041559RFX



Universal children's cotton shorts in waist with a distinctive back pocket, suitable for bouldering and rope climbing. Cut and material derived from popular adult shorts. More color options for boys and girls.



RUMNEY JR



KID'S CLIMBING SHORTS FOR ALL DAY COMFORT

FABRIC

MAIN: 97% cotton 3% elastane

breathable, durable

INFO

fit: regular

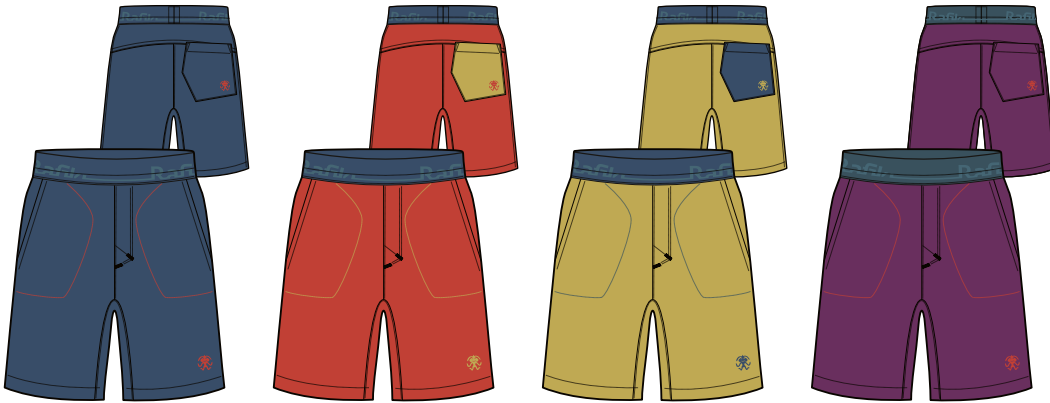
size: 128, 140, 152

weight: 130 g

inseam length: 21,5 cm

FEATURES

- elastic waistband
- 2 front pockets
- rear pocket



ensign blue
10041617RFX

red clay
10041619RFX

cress green II
10041616RFX

phlox
10041618RFX



Trousers for every little climber or adventurer. Pleasant cotton material that does not restrict movement, something that lasts, for added comfort added a wide Rafiki rubber at the waist. More color options for boys and girls.



PEDRO JR



KIDS CLIMBING PANTS FOR ALL DAY COMFORT

FABRIC

MAIN: 97% cotton 3% elastane

breathable, durable

INFO

fit: regular

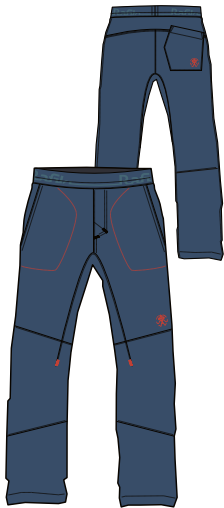
size: 128, 140, 152

weight: 190 g

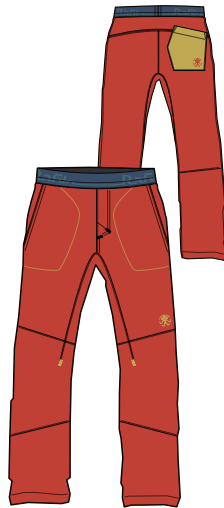
inseam length: 71 cm

FEATURES

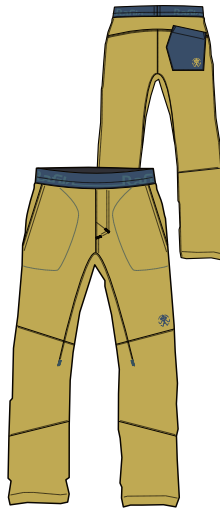
- elastic waistband
- ergonomic shaped knees
- 2 front pockets
- rear pocket



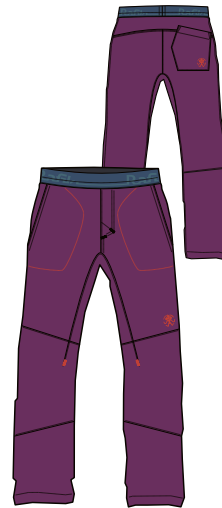
ensign blue
10041611RFX



red clay
10041613RFX



cress green II
10041610RFX

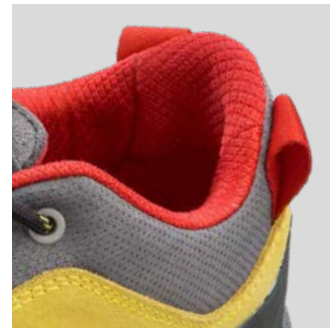
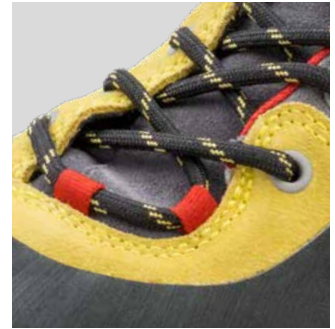


phlox
10041612RFX





RAFIKI SHOES



Introducing the newest addition to the Rafiki collection, the Monte street approach shoes. Built for both durability and comfort, the Monte features a sticky rubber sole and a premium suede leather upper with rubber toe protection. The toe shape and upper construction make it ideal for technical walking and climbing, making it the perfect shoe for everyday use as well as the approach to your local crag. The two-part tongue brings ultimate comfort without the need for any adjusting, while

the lace-to-toe design provides a precision fit and sure feel even on the most unstable terrain. The Monte also includes webbing loops for clipping or stowing the shoes when the trail ends and the climbing begins. Whether you're an experienced climber or just starting out, the Monte approach shoes will quickly become your go-to shoe for your outdoor climbing adventures. With its premium quality and unbeatable design, the Monte is sure to be a valuable addition to your shoe rack.

MONTE M

NEW

MEN'S STREET APPROACH SHOES

FABRIC

- suede leather
- EVA midsole

- durable, breathable, weather resistant

INFO

size: 41-46

FEATURES

- premium Nubuck leather upper
- RFK sticky rubber outsole
- rubber heel rand and toe cap protection
- extended lacing „lace to toe“
- webbing loops for clipping options
- climbing forefoot
- split tongue



golden olive
10041590RFX



arona
10041588RFX



ebony
10041589RFX



Introducing the newest addition to our Rafiki collection - the Massi street shoes, designed for climbers who need a comfortable and durable shoe for everyday use. Inspired by the design of approach shoes, these shoes are built for durability and comfort, making them perfect for everyday use. The sticky rubber sole provides excellent grip, while the premium suede leather upper ensures both weather resistance and comfort. The low rubber toe protection and toe shape of the Massi shoes are inspired by climbing shoe construction, allowing

for maximum technical performance and precise foot placement. The two-part tongue brings a level of comfort that requires no adjusting. The webbing loops allow for easy clipping or stowing, making these shoes a versatile choice for climbers. Whether you're headed to the local crag or just out and about town, the Massi shoes won't disappoint on unstable terrain. With their combination of style, durability, and performance, they're the perfect addition to any climber's footwear collection.

MASSI M NEW

MEN'S EVERYDAY STREET SHOES

FABRIC

- suede leather
- EVA midsole

- durable, breathable, weather resistant

INFO

size: 41-46

FEATURES

- premium Nubuck leather upper
- RFK sticky rubber outsole
- rubber toe protection
- webbing loops for clipping options
- climbing forefoot
- split tongue



golden olive/smoked
10041571RFX



citadel/magnet
10041570RFX



india ink
10041572RFX



Introducing the Rafiki Collection's latest addition, the Access street shoes for climbers. Designed for durability and comfort and featuring a sticky rubber sole that provides great grip on any surface. The premium suede leather upper offers both weather resistance and comfort, while the low rubber toe protection and toe shape, inspired by climbing shoe construction, allowing for technical performance and precise foot placement. The two-part tongue ensures a comfortable fit that doesn't require adjusting, and webbing loops allow for easy

clipping or stowing. The elastic heel strap provides an easy on-and-off option at the gym or crag, and the comfortable sock-like bootie fit ensures a snug fit all day long. These shoes are perfect for everyday use and won't disappoint in unstable terrain, making them a versatile addition to any climber's shoe collection. Whether you're headed to the local gym, crag or just exploring the city, the Access street shoes will keep you comfortable and stylish all day long.

ACCESS M **NEW**

MEN'S HYBRID STREET SHOES

FABRIC

- suede leather
- EVA midsole

- durable, breathable, weather resistant

INFO

size: 41-46

FEATURES

- premium Nubuck leather upper
- RFK sticky rubber outsole
- rubber toe protection
- elastic heel strap
- comfortable sock-like bootie fit
- webbing loops for clipping options
- climbing forefoot
- split tongue



golden olive/smoked
10041481RFX



arona/magnet
10041480RFX



india ink
10041482RFX



Introducing the Essequibo men slip-on shoes from Rafiki, perfect for those hot summer days when you want to be barefoot but still need protection for your feet. With a breathable canvas upper and a comfortable sock-like bootie fit, these shoes offer the ultimate comfort for your feet. The sticky rubber sole provides excellent grip, while the collapsible heel makes them easy to slip on and off at the gym or crag. Designed for everyday use, the Essequibo shoes are perfect for an easy

access to a local crag or daily errands around town. They offer a minimalist and lightweight approach to footwear, making them ideal for those who prefer to feel the ground beneath their feet. With their sleek and stylish design, they are also suitable for casual wear.



ESSEQUIBO M NEW

MEN CASUAL SLIP-ON SHOES

FABRIC

- EVA midsole

INFO

size: 41-46

FEATURES

- RFK sticky rubber outsole
- breathable canvas upper
- comfortable sock-like bootie fit
- minimalist and lightweight



pelican
10041520RFX



black sand
10041518RFX



gibraltar sea
10041519RFX



Introducing the newest addition to the Rafiki collection, the Monte street approach shoes. Built for both durability and comfort, the Access features a sticky rubber sole and a premium suede leather upper with rubber toe protection. The toe shape and upper construction make it ideal for technical walking and climbing, making it the perfect shoe for everyday use as well as the approach to your local crag. The two-part tongue brings ultimate comfort without the need for any adjusting,

while the lace-to-toe design provides a precision fit and sure feel even on the most unstable terrain. The Monte also includes webbing loops for clipping or stowing the shoes when the trail ends and the climbing begins. Whether you're an experienced climber or just starting out, the Monte approach shoes will quickly become your go-to shoe for your outdoor climbing adventures. With its premium quality and unbeatable design, the Monte is sure to be a valuable addition to your shoe rack.

MONTE W NEW

WOMEN'S STREET APPROACH SHOES

FABRIC

- suede leather
- EVA midsole
- durable, breathable, weather resistant

INFO

size: 36-41

FEATURES

- premium Nubuck leather upper
- RFK sticky rubber outsole
- rubber heel rand and toe cap protection
- extended lacing „lace to toe“
- webbing loops for clipping options
- climbing forefoot
- split tongue



twilight mauve
10041593RFX



arona
10041591RFX



magnet
10041592RFX



premium Nubuck leather upper

webbing loops for clipping options

split tongue

rubber toe protection

Introducing the newest addition to our Rafiki collection - the Massi street shoes, designed for climbers who need a comfortable and durable shoe for everyday use. Inspired by the design of approach shoes, these shoes are built for durability and comfort, making them perfect for everyday use. The sticky rubber sole provides excellent grip, while the premium suede leather upper ensures both weather resistance and comfort. The low rubber toe protection and toe shape of the Massi shoes are inspired by climbing shoe construction, allowing

for maximum technical performance and precise foot placement. The two-part tongue brings a level of comfort that requires no adjusting. The webbing loops allow for easy clipping or stowing, making these shoes a versatile choice for climbers. Whether you're headed to the local crag or just out and about town, the Massi shoes won't disappoint on unstable terrain. With their combination of style, durability, and performance, they're the perfect addition to any climber's footwear collection.

MASSI W **NEW**

WOMEN'S EVERYDAY STREET SHOES

FABRIC

- suede leather
- EVA midsole

- durable, breathable, weather resistant

INFO

size: 36-41

FEATURES

- premium Nubuck leather upper
- RFK sticky rubber outsole
- rubber toe protection
- webbing loops for clipping options
- climbing forefoot
- split tongue



lichen/smoked
10041574RFX



arona/magnet
10041573RFX



periscope
10041575RFX



Introducing the Rafiki Collection's latest addition, the Access street shoes for climbers. Designed for durability and comfort and featuring a sticky rubber sole that provides great grip on any surface. The premium suede leather upper offers both weather resistance and comfort, while the low rubber toe protection and toe shape, inspired by climbing shoe construction, allowing for technical performance and precise foot placement. The two-part tongue ensures a comfortable fit that doesn't require adjusting, and webbing loops allow for easy

clipping or stowing. The elastic heel strap provides an easy on-and-off option at the gym or crag, and the comfortable sock-like bootie fit ensures a snug fit all day long. These shoes are perfect for everyday use and won't disappoint in unstable terrain, making them a versatile addition to any climber's shoe collection. Whether you're headed to the local gym, crag or just exploring the city, the Access street shoes will keep you comfortable and stylish all day long.

ACCESS W **NEW**

WOMEN'S HYBRID STREET SHOES

FABRIC

- suede leather
- EVA midsole

- durable, breathable, weather resistant

INFO

size: 36-41

FEATURES

- premium Nubuck leather upper
- RFK sticky rubber outsole
- rubber toe protection
- elastic heel strap
- comfortable sock-like bootie fit
- webbing loops for clipping options
- climbing forefoot
- split tongue



violet ice/smoked
10041485RFX



arona/magnet
10041483RFX



periscope
10041484RFX

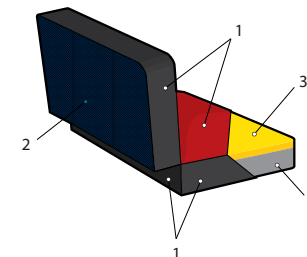


TRANSIT

#RAFIKICLIMBING



RAFIKI ACCESSORIES



- 1 - 100% polyester 6000
- 2 - 100% polyester 6000/PVC
- 3 - hard PE foam 30 mm
- 4- PU foam 70 mm

COLLAPSE

Looking for a reliable and sturdy bouldering crash pad that can save tough falls? Look no further than our new three part crash pad, made with two-layer foam cushioning that lets you customize the hardness to your preference. The three part construction allows adaptation to terrain unevenness and excellent transport dimensions. With backpack-like straps, you can easily carry it with you on any adventure. The polyester water-resistant coating, extra layer of PVC coating on the bottom side, and steel buckles ensure durability and longevity. Plus, the exchangeable mattress means it'll last even longer. Proudly made in the Czech Republic.

GRADE

Novelty in our line, the classic two piece bouldering crash pad is a must-have for any climber. With its two-layer foam cushioning, you can choose the perfect hardness for your landings. The durable design features a water-resistant polyester coating, extra layer PVC coating on the bottom side, and steel buckles to ensure it can withstand even the roughest treatment. Made in the Czech Republic, the pad also comes with a possibility of changing the internal mattress when it wears too much, ensuring it will serve you for years to come. Added comfortable backpack straps let you to carry the crashpad anywhere with ease. Don't settle for less - upgrade your gear with our classic bouldering crash pad.

DROP

The two-part thin bouldering crash pad is a versatile accessory that can be used to overlap gaps between individual crash pads or as a comfortable sleeping or picnic pad. The durable design features thick polyester coating, steel buckles and is made in the Czech Republic. The two parts can also be detached and used individually. Its thin profile makes it easy to pack and transport, and its multi-functional use makes it a great addition to any bouldering gear collection.

COLLAPSE NEW

THREE-PART CRASH PAD

FABRIC

- 100% polyester 600D
- 100% polyester 6000/
PVC

INFO

size: 0/S
weight: 9000 g
open: 210x100x10 cm



salsa
10041472RFX

GRADE NEW

TWO-PART CRASH PAD

FABRIC

- 100% polyester 600D
- 100% polyester 6000/
PVC

INFO

size: 0/S
weight: 6000 g
open: 140x100x10 cm



salsa
10041471RFX

DROP NEW

TWO-PART SITSTART CRASH PAD

FABRIC

- 100% polyester 600D

INFO

size: 0/S
weight: 1700 g
open: 100x120x3 cm



salsa
10041470RFX



GRIT 40

The Grit climbing backpack with a 40-liter capacity is perfect for carrying all of your climbing gear. Its robust and wear-proof construction, TPU coating, and full-length zipper in the middle of the back ensure durability and allow for easy access to all your gear while the backpack is on the ground. With two large side pockets, padded shoulder straps, loops for carabiners, retractable straps for attaching the rope and straps for the clipstick, the Grit backpack is both practical and comfortable. Plus, the two big loops at the top and bottom of the backpack provide the option to move the backpack under the rock while it is open.



GRIT 40
- padded comfortable hip belt with a small pocket

GRIT 28
- simple light detachable hip belt (NO padding)

GRIT 28

The smaller brother of the 40 liter Grit backpack is lighter and has a simpler construction, but at the same time it features the same durability and versatility. With the smaller size and simple and detachable hip belt it is a perfect for shorter or smaller climbing missions or for girls.

GRIT 40 **NEW**

CLIMBING BAG

FABRIC

- 600D polyester TPU coating
- 100% polyester 210D coated

INFO

fit: UNI
size: O/S
weight: 1200 g
capacity: 40 l



blue nights
10041473RFX

GRIT 28 **NEW**

CLIMBING BAG

FABRIC

- 600D polyester TPU coating
- 100% polyester 210D coated

INFO

fit: UNI
size: O/S
weight: 890 g
capacity: 28 l



blue nights
10041474RFX

HAULER 50

DURABLE WEATHER-RESISTANT DUFFEL BAG

Every enthusiastic climber will just love this 50l climbing travel bag. Rafiki Hauler is made of a durable material, has a wide zip opening and reinforced shoulder straps that can be either used to wear the bag as a backpack or stowed-away. Lightweight all-aluminum carabiners on the straps add to the durability. Handles all-around the bag enable easy carrying. Climbers will also love the webbing daisy chain on the sides of the bag for attaching climbing equipment or a water bottle. The bag can be packed into its own inner pocket. Inner mesh pockets are perfect for climbing shoes and small items fit well into a practical side pocket equipped with a waterproof zip. Just a perfect bag for a climbing trip.

FABRIC

- 100% polyester 420 D two tone ripstop (two side coated)
- durable, waterproof, packable

INFO

fit: UNI
size: D/S (55x33x25 cm)
weight: 650 g
capacity: 50 l

FEATURES

- durable fabric
- wide zipper lid opening with mesh pocket
- removable shoulder straps with metal buckles
- side zipper pocket
- front pocket w/ water-proof zipper
- 4 sturdy handles
- packable into its own pocket



anthracite
10031669RFX

ROPER

ROPE BAG

A practical and durable ropesack with large removable canvas and waterproof sealed seams protecting the rope inside.

FABRIC

- 100% polyester 600D
- Tarp: 100% polyester 210D coated

INFO

size: O/S
weight: 590 g
length: tarp 135-125 cm
capacity: 25 l

FEATURES

- 2 compression straps
- adjustable shoulder strap
- integrated rope tarp with colour loops
- hold ropes up to 80 m



charcoal gray
216RF0046BP.01

SCRUB 26

NEW

STREET TOP-LOADING BAG

The Scrub backpack with a capacity of 26 liters is perfect for everyday use. Its design is inspired by the big wall hauler bags, featuring durable construction and steel buckles. The internal laptop pocket keeps your device secure while the small side pocket is ideal for stashing your phone or wallet. The large side zipper opening allows easy access to items at the bottom of the backpack. Whether you're commuting to work, running errands or heading to your local climbing gym, the Scrub backpack has got you covered.

FABRIC

- 100% polyester 900D coated
- 100% polyester 400D coated

INFO

fit: UNI
size: 0/S
capacity: 26 l

FEATURES

- top loading design
- drawcord skirt closure
- side full length zipper access
- internal zipper pocket



dark navy
10041475RFX



stone
10041476RFX



corsair
10041479RFX



crest
10041478RFX

GUIDE BOOK COVER **NEW**

GUIDE BOOK COVER

Introducing a durable climbing guide book cover that will fit and protect even the thickest guidebooks. This cover features a handy loop that can be used to clip it or hang it anywhere. The design is simple, yet effective in protecting your guidebook from the elements and wear and tear. Now you can take your guidebook with you on all your climbing adventures without having to worry about it getting utterly destroyed.

FABRIC

- 100% polyester 900D coated
- 100% polyester 210D coated

INFO

fit: UNI
size: Q/S (260x175x40 mm)
weight: 210 g

FEATURES

- sturdy cover
- strong attachment loop
- integrated pen holder



anthracite
10041477RFX

CAMP

SNAPBACK

No matter what they say, flat brims are cool. Get the Camp cap and set off for climbing or city walks. Don't give up on your style wherever you go. And if you ever happen to lack motivation, look into a mirror – Go Big or Go Home, man.

FABRIC

- 73% cotton 27% polyester
- 100% polyester

INFO

fit: UNI
size: 0/S
weight: 98 g

FEATURES

- adjustable size



golden olive
10024457RFX

anthracite
10024458RFX

gray violet
10024459RFX

CHALK

MAGNESIUM

Get a grip with our high-quality magnesium products for climbing! Our magnesium is perfect for drying your skin and improving your grip during your climb. It's suitable for use on climbing walls, rocks, and even for gymnastics and fitness activities. We pride ourselves on offering the highest quality products, tested by the state health institute, and all made in the EU. Our range of products includes crushed magnesium, liquid magnesium, and magnesium balls, so you can choose the format that best suits your needs. Crushed magnesium is perfect for refilling your chalk bag or bucket, while liquid magnesium is ideal for quick and easy application. The magnesium balls are a convenient option for those who want to avoid the mess of powdered magnesium.

FABRIC

- 100% chalk

INFO

„less talk more chalk..“

FEATURES

- eco cosmetics products
(not chemicals)
- 100% healthy



MG Ball 40 g
117RF0001AX.01



MG Liquid 200 ml
117RF0002AX.01



MG Liquid 100 ml
10005126RFX



MG Dose 100 g
117RF0003AX.01



MG Sack 250 g
117RF0004AX.01

SCOOP

CHALK BAG

Practical chalk bag with classic shape with distinctive Rafiki logo and drawstring closure. The natural part is a brush loop and the necessary waist belt.

FABRIC

- 97% cotton 3% elastane
- 100% polyester

INFO

fit: UNI
size: 0/S
weight: 100 g

FEATURES

- reinforce neck with drawstring closure
- 2 loops for belt fastening (belt included)
- brush loops
- microfleece lined interior



persian red
10001938RFX

dark navy
10029645RFX

lemon curry
10001939RFX

cabbage
10001941RFX

heliotrope
10029644RFX

BISHOP

BOULDERING CHALK BAG

Let us introduce you the Bishop. It's not a smeared climbing magnesium bag – it's a roll top boulder bag with a metal buckle closure. It withstands even indelicate manipulation. There is a side zip pocket to hide keys, money and a plaster for emergency cases.

FABRIC

- 100% cotton
- 100% polyester

INFO

size: O/S
weight: 175 g

FEATURES

- stable design
- Velcro roll-up closure with metal buckle
- side zippered pocket
- 2 brush slots
- microfleece lined interior



dark navy
10004689RFX



El Paso
10029650RFX



RAFIKI WINTER 2023

WOMEN

DUCK DOWN



MORENA

DuPond SORONA



NEW FLYN II

AUTANA

COTTON PLAID TWILL



NEW KARUN (unisex)

POLARSTRETCH GRID



NEW LINYA

POLARSTRETCH LOFT



TARIFA

COTTON JERSEY



MANDALA

COTTON PLAID TWILL



NEW MOJARRA

SORONA AGILE



VIPERA

MEN



FUEGO



NEW FITZ

GLEN



NEW KARUN (unisex)



NEW ASCENT



HULK



PANTERA



VIRAGE



PITONE

WOMEN



CERRO



NEW ASIS



NEW SIERRA



BADAMI

MEN



TORRE



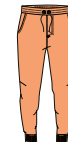
NEW ARAN



LEDGE



NEW ROCKLAND



DURGA

BOW FLAG

A CLASSIC ADVERTISING FLAG AVAILABLE IN SIZE "S" OR "L" IT INCLUDES PRINTED TEXTILE, FLAGPOLE AND STAND FOR INDOOR AND OUTDOOR USE.

INFO

size: "S": 55x200 cm
"L": 80x340 cm



BANNER

PVC BANNER WITH METAL MESH AROUND THE PERIMETER FOR MOUNTING.

INFO

size: 300x100 cm



LOGO STAND

POS-CARDBOARD DISPLAY STAND,
TWO-SIDE PRINT, SUITABLE EVEN FOR
SUSPENSIONS IN, E.G. SHOP WINDOWS.

INFO

size: 35 cm - circle diameter



CUBE

IMAGE PAPER CUBE, TWO SIDES WITH
LOGO PRINT, THREE SIDES WITH IMAGE
PHOTO PRINT.

INFO

size: 30x30 cm





Rafiki

#RAFIKICLIMBING



Rafiki



Ra



HANGERS

ORIGINAL SOLID WOODEN
RAFIKI HANGERS WITH NOTCHES.

INFO

size: 43 cm



STICKERS

SET OF 11PCS SELF-ADHESIVE
LABELS. ON AG SHEET. 50PC PER
PACKAGE.

INFO

size: 105x148 cm



NALGENE BOTTLE

THE ORIGINAL. THE TRAILBLAZER.
THE SIR EDMUND OF WATER BOTTLES.

INFO

size: 32 oz wide bottle

- durable
- screw top



RAFIKI TEAM

Our ambassadors include experienced climbers as well as interesting personalities and promising aces. Thanks to a diverse cooperation with the climbing community, we constantly collection their impulses that we project into our future work and collections.

#RAFIKICLIMBING





The most prominent members of the team are:
Vojta Trojan, a tireless rock climber and racer,
Štěpán Stráník, who is constantly trying and inventing new difficult projects in the Moravian Karst,
Kuba Konečný, a successful competitor who has rope climbed routes up to 9a+,
Edita Vopatová, a leading Czech rock climber,
Rob Denayer one of the best Belgian boulderer or Spanish 8c climber
Núria Díaz and many others excellent climbers.

#RAFIKITEAM

RAFIKI EVENTS



For a long time, we have been supporting exciting and often unique climbing events such as the Rafiki Water Boulder Games, the Rafiki Urban Boulder Race and other climbing competitions and festivals.

We are very happy about the success of the Czech Mountaineering Association's climbing team that we have been supporting for years.

#RAFIKICLIMBING





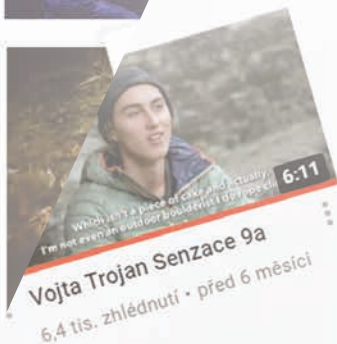
SMÍCHOFF





rafikiclimbir
apparel for climber

RAFIKI MEDIA



#rafikiclimbing



www.facebook.com/rafiki.climbinglife



www.rafikiclimbing.com



Rafiki Climbing



RAFIKI THE WORLD IS WIDE

You can bump into Rafiki while sipping coffee in the winding streets of Arco in Italy, when endlessly practising in the shady forests of Frankenjura in Germany, while improving your personal best in sunny Kalymnos, or when spending the winter climbing in far-away Spain.

#RAFIKICLIMBING



HOW TO MEASURE

MEN

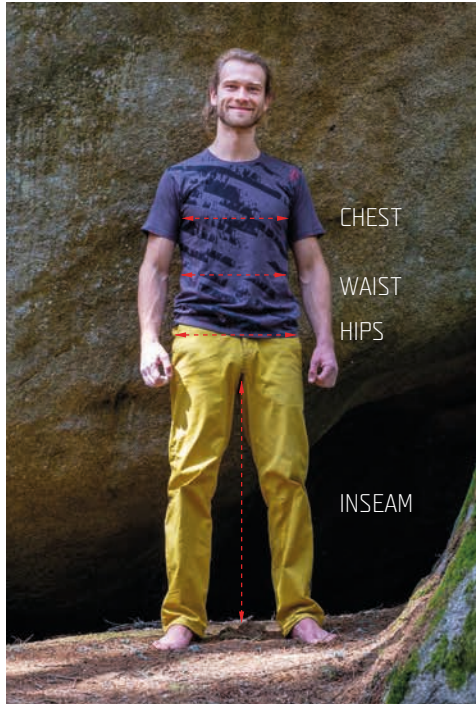
CHEST / Place the tape measure under the arms and around the fullest part of your chest with arms raised slightly.

WAIST / Measure all the way around your body, level with your belly button. Make sure it's not too tight and that it's straight, even at the back. Don't hold your breath while measuring.

HIPS / Put your feet together. Locate the correct area of your hips and measure the widest point around your buttocks. Hold the start of the tape measure on one hip, wrap it around your buttocks and around your other hip and then back to where you started.

INSEAM / Grab your favorite pair of pants. Measure the inseam starting at the crotch seam to the bottom of the pant leg.

SLEEVE LENGTH / Measure with your hands on your hips, from the neck edge, across your shoulder and down the outside of your arm to the wrist bone.



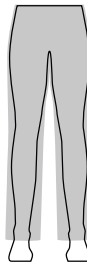
SLIM / FITTED
Fits close to the body
and form fitting.



STRAIGHT
Straight cut
through the body



RELAXED
Roomy and comfortable.
Drapes loosely on the body



WOMEN

HOW TO MEASURE

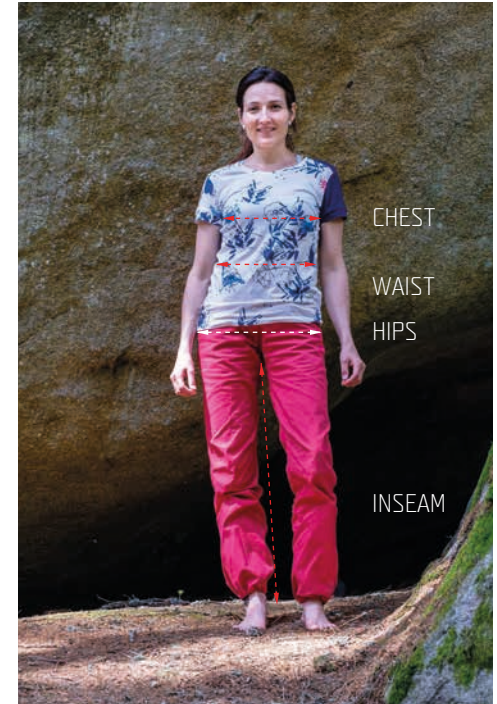
BUST / Place the tape measure under the arms and around the fullest part of your bust with arms raised slightly.

WAIST / Measure all the way around your body, level with your belly button. Make sure it's not too tight and that it's straight, even at the back. Don't hold your breath while measuring.

HIPS / Put your feet together. Locate the correct area of your hips and measure the widest point around your buttocks. Hold the start of the tape measure on one hip, wrap it around your buttocks and around your other hip and then back to where you started.

INSEAM / Grab your favorite pair of pants. Measure the inseam starting at the crotch seam to the bottom of the pant leg.

SLEEVE LENGTH / Measure with your hands on your hips, from the neck edge, across your shoulder and down the outside of your arm to the wrist bone.



MAN	XS	S	M	LX	L	XXL
	44	46	48	50	52	54
CHEST	86-93	94-98	99-103	104-108	109-113	114-118
WAIST	73-77	78-82	83-87	88-92	93-97	98-102
HIPS	87-91	92-96	97-101	102-106	107-111	112-116
INSEAM	82-84	83-85	84-86	87-89	89-91	90-92

WOMAN	32	34	36	38	40	42	44
	XXS	XS	S	M	L	XL	XXL
CHEST	77-80	81-84	85-88	89-92	93-96	97-100	100-103
WAIST	59-62	63-66	67-70	71-74	75-78	79-82	83-86
HIPS	85-88	89-92	93-96	97-101	102-105	106-109	110-113
INSEAM	76-79	78-81	80-83	82-85	84-87	86-89	88-90

KID	128	140	152
	6-7y	8-9y	10-11y
CHEST	64	69	74
WAIST	58	63	68
HIPS	70	75	80
INSEAM	56	64	73

The measurements are in **centimetres**.

The measurements are only indicative, not dimensions of the garment
[except for inseam, which is garment measurement]
We recommend to try out our clothes personally.

Rafiki reserves the right to perform changes in the products presented in this workbook. Any part of this presentation cannot be reproduced without permission of Rafiki.

Photographers: Jan Novák, Jakub Cejpek, Adam Mašík, David Hájek, Jakub Konečný, Lukáš Klingora, Pavel Nesvadba, Jan Haráč, Petra Šebestová,
Karolína Oliveriusová, Lukáš Bība and Rafiki Urban Boulder Race photo archive, Outdoor Concept, a. s. archive.



Rafiki

#RAFIKICLIMBING



www.rafikiclimbing.com



Rafiki-climbing life



[rafikiclimbing](https://www.instagram.com/rafikiclimbing)



Rafiki Climbing

Americká 54 | 301 00 Plzeň | Czech Republic | tel.: + 420 379 200 666 | office@rafiki.cz