



Rafiki

winter 2024





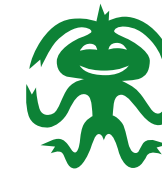
ACTION DIRECTE (9A), FRANKENJURA, GERMANY



FOR THE LOVE OF CLIMBING

We are climbers. Rafiki was born while we were getting pumped on long rock lines, projecting moves on difficult boulders, walking a wobbly slackline, and enjoying evenings spent sitting by the fire with friends. These are the experiences that inspired our first t-shirts and pants and continue to inspire our entire collection today. We are climbers and nothing will ever change that.

#RAFIKICLIMBING



GO SUSTAINABLE



REDUCE



RECYCLE



REUSE



RETHINK

When producing apparel and gear for the sport that is so tightly connected to nature as climbing is, sustainability naturally comes to the process. We design and manufacture every single piece to be as durable as possible and in timeless design. The longer it serves each buyer the better for nature. We work hard to find eco friendly materials that can replace plastic and non-natural fabrics while maintaining the same quality and performance. We are not at the finish line yet, but we push further with every collection. To reduce the amount of used plastics, we also reduce the packaging size, and all Rafiki products are packed into recycled plastic bags.

MATERIAL AND FEATURES LEGEND



GOTS

The strictest certification for textiles made of organic textile fibers.



RDS

Independent, global standard for down feathers that places great emphasis on animal welfare.



DUCK DOWN

All-natural fill comprised of goose or duck plumage. The lofty nature of the plumage allows it to trap air between its filaments, which is then heated by the body's warmth.



DUPONT SORONA

Eco-efficient performance insulation fiber that is 37% plant based, using 30% less energy and emitting 50% less greenhouse gas as compared to the production of insulation fibre from non-renewable resources.



SORONA AGILE

Superior substitute for spandex, it is an eco friendly performance fiber made in part from annually renewable plant-based ingredients (37%). Compared to Nylon 6 it uses 30% less energy and releases 63% fewer greenhouse gas emissions.



POLAR STRETCH GRID

Thin fleece that is lighter and more breathable than ever thanks to the grid construction and the channels between the touch points.



POLAR STRETCH LOFT

Brushed fleece with a high loft that has great thermo-insulating properties and at the same time feels soft and warm against the skin.



ORGANIC COTTON

More sustainable and environmentally friendly alternative to conventional cotton, grown without the use of toxic and persistent pesticides.



MODAL

Fibres made from beech pulp that are certified as biodegradable and compostable and at the same time feel soft against the skin.



CLIMBING DENIM

Crafted with durability in mind, it combines the classic look of denim with performance features like surprisingly big stretch and reinforced stitching.



WATER REPELENT

DWR treated fabric resists water, causing it to bead and roll off. It keeps you dry without sacrificing breathability.



WIND RESISTANT

Wind-resistant fabric blocks cold gusts, keeping you warm and comfortable in blustery conditions.



STRETCHY

Models that provide an especially flexible and comfortable fit, allowing freedom of movement without compromising durability.



QUICK DRY

Quick-dry garments that swiftly wick away moisture, keeping you dry and comfortable during all activities.



LIGHTWEIGHT

Models that are made from light materials and therefore great for active movement.



organic cotton



DUPONT sorona



Lenzing Modal



RETHINK





WOMEN'S COLLECTION

ASIS	46-47
AUTANA	22-23
BADAMI	64-65
CERRO	44-45
DARCY	18-19
ESTRELLA	32-33
EVO	48-49
FALAISES	52-53
FEMIO	60-61
FLYNN II	20-21
CHAIN	50-51
CHULILLA	40-41
JAY	38-39
KARUN	24-25
LINYA	26-27
MANDALA	30-31
MASSONE	56-57
MOJARRA	34-35
MORENA	16-17
MURIEL	58-59
NOIA	62-63
SIERRA	54-55
SUESCA CTN	42-43
TARIFA	28-29
VIPERA	36-37

MEN'S COLLECTION

ARAN	96-97
ARCOS	88-89
ASCENT	76-77
BETA	100-101
CRAG	110-111
CRIMP	98-99
DANTE	70-71
DRIVE	114-115
DURGA	118-119
FITZ	72-73
FUEGO	68-69
GRANITE	90-91
HULK	78-79
KARUN	74-75
LEAD II	116-117
LEDGE	102-103
LIZARD	104-105
MEGOS	112-113
PANTERA	80-81
PITONE	86-87
ROCKLAND	106-107
RODELLAR	108-109
TORRE	94-95
TRAVERSE	82-83
VIRAGE	84-85
ZONE	92-93



SHOES COLLECTION

ACCESS M	126-127
ACCESS W	132-133
MASSI M	124-125
MASSI W	130-131
MONTE M	122-123
MONTE W	128-129

ACCESSORIES

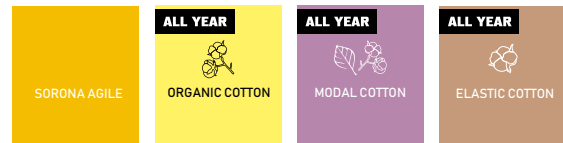
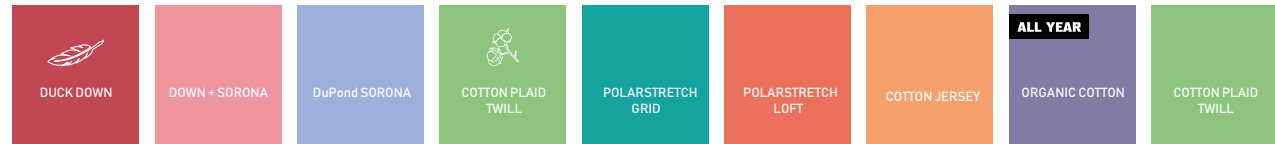
BISHOP	151
CAMP	147
COLLAPSE	136-137
DROP	136-137
GRADE	136-137
GRIT 28	138-139
GRIT 40	138-139
GUIDE BOOK COVER	145
HAULER 50	140
CHALK	153
ROPER	141
SCOOP	149
SCRUB 26	143

PROMOTION

BANNER	154
BOW FLAG	154
CUBE	155
HANGERS	157
LOGO STAND	155
NALGENE BOTTLE	157
STICKERS	157



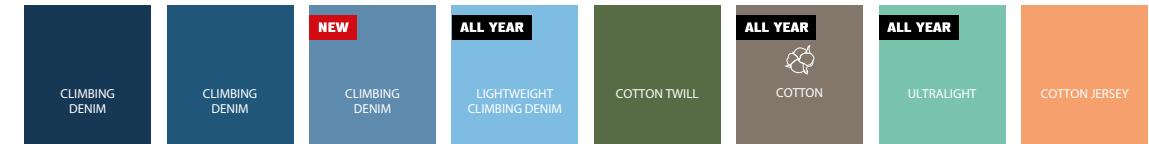
AUTUMN - WINTER | 2024 | WOMEN map



#RAFIKICLIMBING



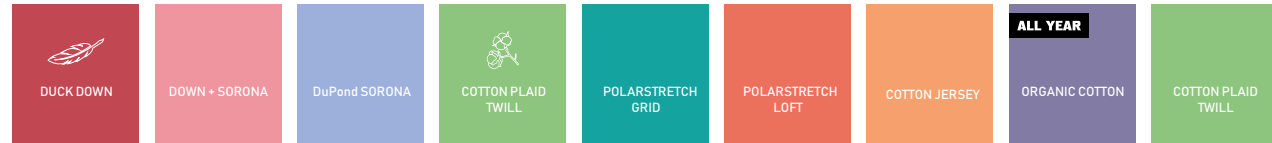
AUTUMN - WINTER | 2024 | WOMEN map



#RAFIKICLIMBING



AUTUMN - WINTER | 2024 | MEN map



FUEGO DANTE FITZ KARUN (unisex) ASCENT HULK PANTERA TRAVERSE VIRAGE



PITONE ARCOS ZONE

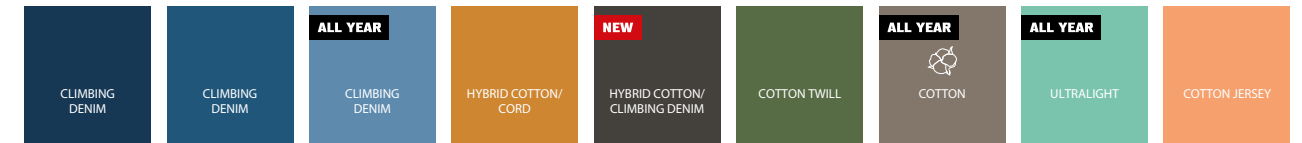


GRANITE

#RAFIKICLIMBING



AUTUMN - WINTER | 2024 | MEN map



TORRE ARAN CRIMP LEDGE NEW LIZARD ROCKLAND CRAG DRIVE DURGA



BETA



ROCELLAR



MEGOS



LEAD II

#RAFIKICLIMBING



AUTUMN - WINTER | 2024 | SHOES map

NEW MEN'S SEMI-APPROACH SHOES	NEW MEN'S STREET SHOES	NEW MEN'S STREET HYBRID SHOES	NEW WOMEN'S SEMI-APPROACH SHOES	NEW WOMEN'S STREET SHOES	NEW WOMEN'S STREET HYBRID SHOES
NEW MONTE M	NEW MASSI M	NEW ACCESS M	NEW MONTE W	NEW MASSI W	NEW ACCESS W

#RAFIKICLIMBING



AUTUMN - WINTER | 2024 | ACCESSORIES map

NEW CRASH PADS	NEW BAGS	CAPS	MAGNESIUM	CHALK BAGS
NEW COLLAPSE	NEW GRIT 40	ROPER	CAMP	MG BALL 40G
NEW GRADE	NEW GRIT 28	NEW SCRUB 26	MG DOSE 100G	BISHOP
NEW DROP	HAULER 50	NEW GUIDE BOOK COVER	MG SACK 250G	
			MG LIQUID 100ML	
			MG LIQUID 200ML	

#RAFIKICLIMBING



DIVOKÁ ŠÁRKA, CZECH REPUBLIC

RAFIKI WOMEN



LOUČOVICE, CZECH REPUBLIC

This women's Rafiki climbing down jacket is a must-have for any climbing backpack. It is definitely the warmest jacket from the Rafiki collection. It'll make you feel cosy and warm, both when belaying a fellow climber in autumn's freezing wind and during winter outdoor bouldering when temperatures drop below zero. We have chosen high quality certified duck down with 650 cuin fill power (90/10). The Morena is made of a lightweight windproof rip-stop material with a DWR treatment for better water resistance. The two-way zip is ideal for easy

belaying. The spacious front pockets are higher up and can be easily accessed when sitting in a harness. On cold days, you will appreciate the cosy microfleece inside the pockets for increased thermal comfort. The jacket has anatomically shaped sleeves, an inner pocket for small items, a stuff sack that it can be packed into, and the popular climbing grades chart inside. With a weight under half a kilo (SIZE 36:), you don't have to worry it would be too heavy for your backpack. So where are you going climbing next?



MORENA

WOMEN'S HIGH LOFT DOWN JACKET



FABRIC

MAIN: 100% nylon ripstop + DWR
INSULATION: Duck Down, fill power 650 cuin, feather ration 90/10, RDS certified

- water-repellent
- wind-resistant
- lightweight
- insulated
- YKK zippers



INFO

fit: regular
size: 34-42

SIZE 36:

- weight: 495 g
- back length: 70 cm

FEATURES

- 2-way main zipper with internal full length windproof flap
- 2 zippered main pockets with microfleece
- inner chest zipper pocket
- inner mesh pockets
- hood self adjustment
- elastic sleeve hems
- inner microfleece neck panel
- lycra forehead cuff
- low hem drawstring adjustment
- compression bag



Lizard/raven
10025528RFX

Chrysanthemum/chili
10025526RFX

Chrysanthemum/insignia
10025527RFX

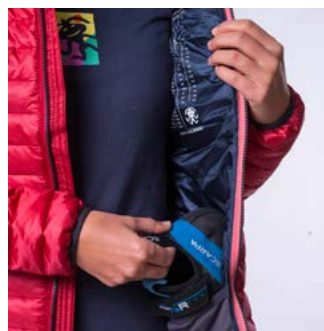




LEONIDIO, GREECE

Our Darcy women's insulated jacket is based on a model that has been proven over the last years. It stands out with a number of features that you will undoubtedly appreciate as a climber. The two-way YKK zipper makes the jacket ideal for use when you don't want to freeze before your partner reaches the selected line. The jacket's outer material is windproof and also has a waterproof adjustment. The combination of duck feather and synthetic fibre ensures a much lower weight and the jacket is perfectly packable plus portable. We placed the feather part on the inside part of jacket to keep you nice and warm. Synthetic part

is on the outside, which has the effect of better usability in rain and wet environment. Plus, it protects the feather from soaking through and ensures you the maximum thermal comfort! For greater freedom of movement of your hands, we have placed stretch wedges in the armpits. The Darcy has two side pockets and one chest pocket, also mesh pockets inside to fit your climbing shoes. And finally, our time-tested classic: a climbing grade conversion chart, so you don't have to count on fingers like in prehistoric times. Whether you're spending an autumn weekend in local crag or wandering the streets on your way to the climbing gym, Darcy will never let you down!



DARCY

WOMEN'S LIGHTWEIGHT INSULATED JACKET



FABRIC

MAIN: 100% nylon ripstop + DWR
 SECONDARY: 95% polyester 5% elastane
 INSULATION: 50% Duck Down, fill power 650 cuin, feather ration 90/10, RDS certified + 50% biofiber Polyester

- water-repellent
- wind-resistant
- insulated
- YKK zippers



INFO

fit: straight
 size: 34-42
 SIZE 36:
 • weight: 480 g
 • back length: 66 cm

FEATURES

- 2-way main zipper with internal full length windproof flap
- polarstretch underarm parts
- 2 zippered main pockets
- zippered chest pocket
- fixed hood with elastic binding and regulation
- low hem and cuffs with elastic binding
- ergonomic shaped sleeves
- inner mesh pockets
- compression bag



Castlerock
10014918RFX



Chrysanthemum
10014919RFX



Blue nights
10047549RFX

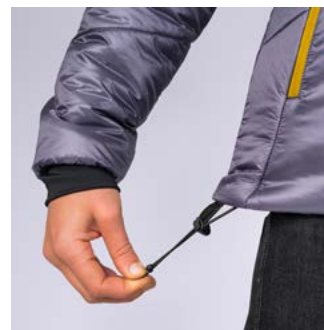




DIVOKÁ ŠÁRKA, CZECH REPUBLIC

This women's climbing insulated jacket with an asymmetric pattern is really lightweight and anatomically shaped and you'll love it for autumn and winter rock climbing trips. It features the proven and environmentally sustainable DuPont Sorona insulation filling, which has a minimum of 30% natural content (corn husk) and is also energy friendly to produce. The outer rip-stop material has a DWR treatment for better water resistance. The jacket has YKK zips, lycra cuffs, mesh pockets for climbing shoes, a drawcord

adjustable hood, zip chest pocket, climbing grades chart and transport case. It is simply a jacket you'll love and won't want to take off.



FLYNN II

WOMEN'S LIGHTWEIGHT COMPACT INSULATED JACKET



FABRIC

MAIN: 100% nylon ripstop + DWR
INSULATION: biofiber Polyester

- water-repellent
- wind-resistant
- insulated
- YKK zippers



INFO

fit: straight
size: 34-42

SIZE 36:

- weight: 400 g
- back length: 66 cm

FEATURES

- 2-way main zipper with internal full length windproof flap
- 2 zippered main pockets
- fixed hood with regulation
- low hem with regulation
- sleeve cuffs with elastic binding
- ergonomic shaped sleeves
- forehead lycra cuff



Cress green
10036349RFX

Cadet/nights
10036350RFX

Tapestry/nights
10036351RFX





AUTANA

WOMEN'S LIGHTWEIGHT INSULATED SKIRT

FABRIC

MAIN: 100% nylon ripstop + DWR
 SECONDARY: 88% polyester
 12% elastane
 INSULATION: biofiber Polyester

- water-repellent
- wind-resistant
- lightweight
- insulated
- YKK zippers



INFO

fit: regular
 size: 34-42

SIZE 36:

- weight: 175 g
- skirt side seam: 54 cm

FEATURES

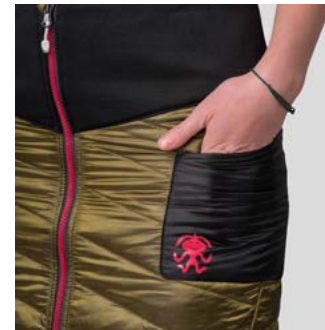
- 2-way main zipper with internal full length windproof flap
- insulated patched pocket
- polarstretch wide waistband
- low hem drawstring adjustment



LOUČOVICE, CZECH REPUBLIC

Getting properly dressed for autumn and winter climbing from the waist up is usually not a problem, but every climber who has ever belayed her partner in winter knows that keeping her legs warm is not easy. And here comes the Autana insulated skirt. At Rafiki, we have put our heads together and made a climbing skirt that features Du Pont Sorona, an eco-friendly insulation made of corn fiber. It insulates well, dries quickly and is friendly to the environment. This skirt has a wide and elastic

powerstretch waist band. This makes it really comfortable during any kind of active movement. The front zip is two-way, so bealying is not a problem. The Autana is made of a lightweight windproof rip-stop material with a DWR treatment for better water resistance. So have you ever worn a stylish 'corn skirt' when rock climbing or bouldering?



Lizard/raven
10025531RFX



Chrysanthemum/chili
10025529RFX



Insignia/chili
10025530RFX





DIVOKÁ ŠÁRKA, CZECH REPUBLIC

Combination of style and function are the hallmarks of the new unisex insulated flannel shirt. Crafted from cotton with polyester furry insulation on the inside, this versatile piece ensures warmth without compromising on freedom of movement. Our designers really went all out with this one and combined two successful styles - a furry sweatshirt and a flannel shirt - into one product. The result is a jacket you can't buy anywhere else. Whether you're embarking

on a climbing trip or navigating the city streets during autumn, "Karun" guarantees a perfect blend of practicality and style.



KARUN

UNI MIDWEIGHT FLANNEL INSULATED JACKET

FABRIC

MAIN: 100% cotton
INSULATION: 100% polyester

- insulated

INFO

fit: regular
size: XS-XXL

SIZE 36:
• weight: 710 g
• back length: 74 cm

FEATURES

- hand pockets
- chest pockets w/ single button flap closure
- central button opening
- lined body and sleeves



Jalapeno plaid
10036380RFX

Pirate plaid
10036381RFX

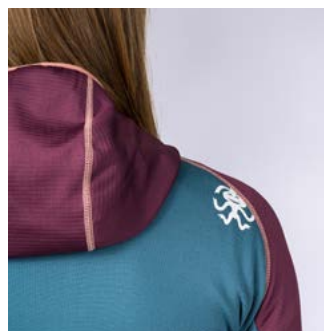
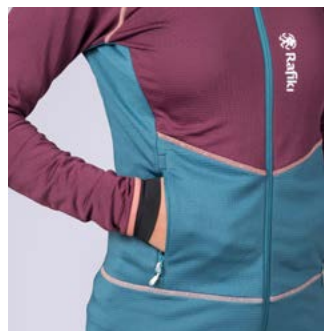




LOUČOVICE, CZECH REPUBLIC

Original colour combinations, a sophisticated climbing cut, and smart technical features are hallmarks of the Linya women's sweatshirt. It is made from lightweight, functional Polarstretch Grid with a system of grooves going through the solid part of the material which makes it moisture-wicking and breathable yet warm. It also offers excellent packability. Thanks to the material used, the sweatshirt can be used as a second layer, not only for climbing but also for other outdoor sports. Its two-way YKK zip makes it

easy to belay your climbing buddy without the need to put the sweatshirt under your harness. A popular lining piece, which is a constant in our collection and which is also worn by the Czech national sports climbing team.



LINYA

WOMEN'S TECHNICAL FULL-ZIP HOODY

FABRIC

MAIN: 95% polyester 5% spandex
(single grid polar fleece)

- warm
- breathable
- lightweight
- stretch
- quick dry
- YKK zippers

INFO

fit: slim
size: 34-42

SIZE 36:

- weight: 360 g
- back length: 63 cm



FEATURES

- 2-way main zipper
- 2 zippered main pockets
- tailored hood with elastic binding
- low hem and cuffs with elastic binding
- sleeve cuffs
- comfortable fit through flat lock seams



Crushed violets/tapestry
10036354RFX

Chrysanthemum/tapestry
10036355RFX

Olive oil/chrys
10036356RFX

Tapestry/nights
10036357RFX





DIVOKÁ ŠÁRKA, CZECH REPUBLIC

This is not only a great climbing area in Spain, but also a perfect sweatshirt you won't want to take off. This is a full-zip stylish 'furry' hooded sweatshirt made of the Polar Stretch Loft brushed fleece that has excellent thermal insulation properties.

This sweatshirt will really keep you warm and cozy. So don't forget to pack it with you on your next climbing trip, there's definitely room in your backpack for it.



TARIFA

WOMEN'S HAIRY FLEECE HOODY

FABRIC

MAIN: 100% polyester
SECONDARY: 88% polyester
12% spandex

- warm
- lightweight
- YKK zippers

POLAR STRETCH
Loft

YKK

INFO

fit: straight
size: 34-42

SIZE 36:

- weight: 470 g
- back length: 64 cm

FEATURES

- fixed hood with elastic binding
- 2-way main zipper
- chest zipper pocket
- low hem and sleeve with elastic cuff
- 2 zippered main pockets



Teal green
10047588RFX

Black bean
10047587RFX





LOUČOVICE, CZECH REPUBLIC

This is not only a legendary boulder in Bishop, USA, or an Indian geometric configuration of symbols, it's also a women's stylish extra-long hoodie that'll make everyone envy once you wear it. The sleeves have Rafiki print on them, and this hoodie has a higher collar with a drawcord and a kangaroo pocket with

zips so that you don't lose your climbing tape, cell phone or other valuables. It is simply a must-have in your climbing wardrobe.



MANDALA

WOMEN'S COMFORTABLE LONG HOODY

FABRIC

MAIN: 70% polyester 26% cotton
4% elasthan

- breathable
- durable
- YKK zippers

INFO

fit: regular
size: 34-42

- SIZE 36:
- weight: 635 g
 - back length: 77 cm



FEATURES

- fixed hood with regulation
- kangaroo pocket with zipper opening
- sleeve hem with elastic binding
- ribbed bottom hem
- long size



Brindle/raven
10036358RFX

Raven
10036359RFX

Raven/tapestry
10036360RFX





ARCO, ITALY

Estrella is a light and breathable sweatshirt made from organic cotton that is easy to climb in. The use of elastane keeps it sufficiently stretchy. It's a good choice for both warm-ups and warming up right after a climb. Wear it when your are going to the

rocks, bulders or a yoga lesson. Its contrasting hood and drawstrings make sure you will catch the eyes of passerby.



ESTRELLA ALL YEAR

WOMEN'S LIGHTWEIGHT WARMUP ORGANIC HOODY

FABRIC

MAIN: 92% organic cotton
8% elastane

- breathable
- stretch
- organic
- soft

INFO

fit: regular
size: 34-42

SIZE 36:
• weight: 265 g
• back lenght: 66 cm

FEATURES

- eco fabric
- hood adjustment
- full area printing



ensign blue/avocado
10041522RFX

india ink
10041523RFX





DIVOKÁ ŠÁRKA, CZECH REPUBLIC

Trust us, it's not just sandstone climbers who wear shirts for climbing. This flannel shirt will serve you great as a second layer instead of a sweatshirt. For this purpose, it has two side pockets and, as usually shirts do, two chest pockets with a flap.

Small gussets are inserted in the armpit areas for better range of motion and maximum freedom of movement. The sleeve cuffs can be set in two positions.



MOJARRA

WOMEN'S MIDWEIGHT FLANNEL SHIRT

FABRIC

MAIN: 100% cotton (yarn-dyed plaid twill)

- breathable

INFO

fit: regular
size: 34-42

SIZE 36:
• weight: 380 g
• back length: 72 cm

FEATURES

- hand pockets
- chest pockets w/ single button flap closure
- sleeve opening and regulation



Orangeade plaid
10047572RFX

Pirate plaid
10036362RFX





DIVOKÁ ŠÁRKA, CZECH REPUBLIC

A T-shirt made of corn? Why not! Vipera is a long-sleeved climbing T-shirt made of Du-Pont Sorona, an eco-friendly corn fibre that we have used to replace elastane. This T-shirt stands out with its

attractive colourful sleeves, round neck, and high stretch material. Definitely a T-shirt that is great for a warm-up and outdoor climbing.



VIPERA

WOMEN'S LONGSLEEVE T-SHIRT

FABRIC

MAIN: 64% Rayon 36% Sorona

- breathable
- stretch



INFO

fit: straight
size: 34-42

SIZE 36:

- weight: 235 g
- back length: 61 cm

FEATURES

- wide round neckline
- sleeves with dividing seams
- front print



Chalk violet
10047591RFX

Cameo green
10047589RFX





DĚČÍNSKÝ SNĚŽNÍK, CZECH REPUBLIC

Rafiki Jay is a great choice for all the girls looking for a comfortable design T-shirt which reflects their

personality. It's made of organic cotton and comes in appealing colours with unique printings.



JAY ALL YEAR



WOMEN'S COMFORTABLE ORGANIC SHORT SLEEVE TEE

FABRIC

MAIN: 100% organic cotton

- breathable
- organic
- soft

INFO

fit: regular
size: 32-42

SIZE 36:

- weight: 95 g
- back length: 60 cm

FEATURES

- eco fabric
- prints variation
- wider neck opening
- raw edge neck and sleeve hems



india ink
10041553RFX

lemon verbena
10041554RFX

hot coral
10041552RFX

peacock blue
10041555RFX

ensign blue
10041551RFX



DĚČÍNSKÝ SNĚŽNÍK, CZECH REPUBLIC

Do you care about environment and your style? If the answer is yes, then the women's Chulilla T-shirt will make you happy twice. It won't lie heavy neither on your body nor on your conscience. The combination of 50% bio cotton and 50% Lenzing Modal® is light and airy. The T-shirt is made of an eco-friendly material with neutral carbon footprint. This

garment is pleasant both to touch and to look at. You will definitely stand out among other climbers thanks to its colorful asymmetric parts.



CHULILLA **ALL YEAR**



WOMEN'S PERFORMANCE LIGHTWEIGHT SHORT SLEEVE TEE

FABRIC

MAIN: 50% modal 50% organic cotton

- breathable
- lightweight
- stretch
- soft
- wicking



INFO

fit: straight
size: 34-42

SIZE 36:

- weight: 85 g
- back length: 61 cm

FEATURES

- eco fabric
- natural touch



india ink
10041546RFX

lantana
10041547RFX

aquifer
10041545RFX





ARCO, ITALY

Our new SUESCA women's climbing singlet should be there in the backpack of every woman who loves climbing or yoga! Designed for all lady climbers, this singlet won't restrict your movement in any way! Its internal bra offers a maximum of support and their padding can be removed as needed. The unique blend of 93 % cotton and 7 % elastane provides a lightweight and packable design that's perfect for on-the-go activities. The breathable cotton blend wicks away moisture, keeping you dry

and comfortable throughout your climbs. Plus the X-shaped back stripes looks really good! Check it out yourself: "rose wine", "india ink" or "ensign blue" colorful designs. See you soon on a yoga lesson, in local gym or on the real rocks. Hasta luego!



SUESCA CTN ALL YEAR

WOMEN'S COTTON ELASTIC SINGLET WITH BUILT IN SPORT BRA



FABRIC

MAIN: 93% cotton 7% spandex
SECONDARY: 92% polyester
8% elastane

- breathable
- stretch
- soft

INFO

fit: slim
size: 34-40

SIZE 36:

- weight: 125 g
- back length: 57 cm

FEATURES

- cotton stretch fabric
- internal bra liner with removable modesty cups
- X-shaped back stripes with flat seams



rose wine
10041630RFX

india ink
10041629RFX

ensign blue
10041628RFX





LEONIDIO, GREECE

You'll love these women's climbing jeans overtrousers with an elastic waist. They're great for climbing in cold weather, but you'll also look great in them when going to the climbing gym, at work, or wandering around town. We've gone to great lengths to make sure the denim is perfect. The

Cerro jeans also feature distinctive pockets, and the bottom hem of the leg is elastic, making it easy to put the jeans on, even when you're wearing climbing shoes. So, are you ready to climb?



CERRO

WOMEN'S CLIMBING DENIM PANTS

FABRIC

MAIN: 55% cotton 23% Rayon
20% polyester 2% spandex
SECONDARY: 88% polyester
12% elastane

- comfortable
- stretch
- durable

INFO

fit: straight
size: 34-42

SIZE 36:

- weight: 480 g
- inseam length: 79 cm

FEATURES

- wide elastic waistband with internal drawcord
- hand pockets
- rear pocket
- gusset for freedom of movement
- ergonomic pre shaped knees
- toothbrush loops
- bottom leg back part elastic



Dark blue denim
10025555RFX





LOUČOVICE, CZECH REPUBLIC

Women's tapered climbing jeans in a classic cut and a more informal look. They look formal, but are incredibly stretchy, so you can easily handle even difficult climbing moves in them. The combination of synthetic fibres and cotton gives the trousers durability and flexibility. The specifically shaped gusset sewn into the crotch and the shaped knees ensure that they won't restrict your movement in any way. If you're looking for comfortable trousers

for everyday wear that won't disappoint even when used for sport, look no further, because that's exactly what the Asis jeans will do for you.



ASIS

WOMEN'S DENIM PANTS

FABRIC

MAIN: 67% cotton 29% polyester
3% rayon 1% spandex

- comfortable
- stretch
- durable
- YKK zippers



INFO

fit: straight
size: 34-42

SIZE 36:
• weight: 440 g
• inseam length: 79 cm

FEATURES

- hand pockets
- rear pockets
- gusset for freedom of movement
- ergonomic pre shaped knees
- waistbelt loops
- fly opening
- waist drawstring adjustment



Dark blue denim
10036366RFX



Black denim
10036367RFX

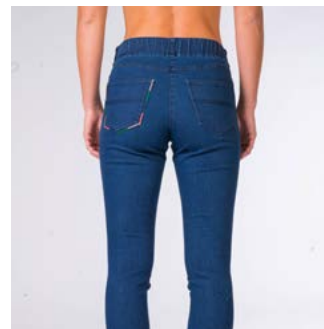




DIVOKÁ ŠÁRKA, CZECH REPUBLIC

Women's chill-out "jeggings" Evo! These are our brand new stretchy denim leggings, made of thicker material, so they'll keep you warm in the autumn and winter! You can safely try any route or boulder project in the cooler months, but thanks to their snug & tight fit, you don't have to worry about going anywhere in the city either. We do not forget about your comfort, so the full-elastic waistband fits comfortably around your well-shaped body. So what?

Bouldering, sport climbing, traditional sandstone or perhaps just a social-cultural event in your home town or village? They just fit everywhere!



EVO **NEW**

WOMEN'S JEGGINGS FOR ALL DAY COMFORT

FABRIC

MAIN: 52% Rayon 28 % cotton
19% polyester 1% spandex

- comfortable
- stretch
- durable

INFO

fit: slim
size: 34-42

SIZE 36:
• weight: 340 g
• inseam length: 76 cm



Blue denim
10047552RFX

FEATURES

- full elastic waistband
- fake front pockets
- 2 rear pockets
- waistbelt loops
- skin-tight denim fabric





TISÁ, CZECH REPUBLIC

The trousers look fine on the street, yet they're also an ideal partner on the rocks. Their ultra-light denim is flexible, breathable, and quick-drying. The fairly wide waist cuff ensures these trousers are a good fit. Their diamond crotch won't limit your motion and doubled shaped knees can deal with even rough treatment on the rocks. The bottom cuff is partially elastic in the back, so from the front, these trousers

look like normal skinny jeans. One more attractive detail is the brush pocket that acts as a frill in its own right.



CHAIN **ALL YEAR**



WOMEN'S LIGHTWEIGHT CLIMBING JEANS FOR ALL DAY COMFORT

FABRIC

MAIN: 64% cotton 29,5% polyester
3,5% rayon 2,5% elastane
SECONDARY: 88% polyester
12% elastane

- breathable
- lightweight
- stretch
- quick dry

INFO

fit: straight
size: 34-42

SIZE 36:

- weight: 335 g
- inseam length: 80 cm

FEATURES

- wide elastic waistband
- 2 front pockets
- 2 rear patch pockets
- gusset for freedom of movement
- double preshaped knee parts
- elastic back low leg
- toothbrush loops



denim
10020011RFX





ANDALUSIA, SPAIN

Women's denim shorts in Rafiki style, which at first glance impress with the unique Rafiki design and decoration. They're great for going out, hitting the wall or going to work or school. But don't worry

at all, they're designed to take on the toughest climbing challenge or a wobbly slackline in the park. So get out there.



FALAISES

ALL YEAR



WOMEN'S LIGHTWEIGHT DENIMSHORTS FOR ALL DAY COMFORT

FABRIC

MAIN: 64% cotton 29,5% polyester
3,5% rayon 2,5% elastane
SECONDARY: 88% polyester
12% elastane

- breathable
- lightweight
- stretch
- quick dry

INFO

fit: straight
size: 34-42

SIZE 36:

- weight: 160 g
- inseam length: 8 cm

FEATURES

- wide elastic waistband
- 2 front pockets
- 1 rear patch pocket



denim
10029673RFX

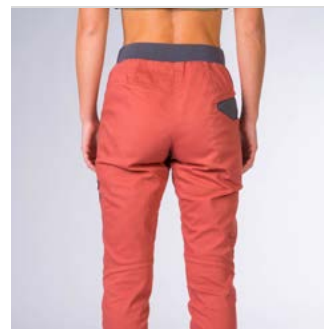




DIVOKÁ ŠÁRKA, CZECH REPUBLIC

These cotton climbing trousers are made of a comfortable twill material. They are suitable for outdoor autumn climbing, going to the wall and for work. Elastic cuffs in the waist and legs ensure comfortable fit, maximum freedom of movement and pleasant climbing experience. At first glance,

you'll be struck by the distinctive pocket entries. It is simply a pair of trousers perfected to the smallest detail. So where will you take them next? Chulilla, Fontainebleau or maybe Finale?



SIERRA

WOMEN'S PERFORMANCE CLIMBING PANTS

FABRIC

MAIN: 98% cotton 2% Spandex
SECONDARY: 95% cotton 5% Spandex

- durable
- stretch
- YKK zippers

INFO

fit: straight
size: 34-42

SIZE 36:
• weight: 460 g
• inseam length: 77 cm



FEATURES

- adjustable partly elastic waistband
- 2 front pockets
- rear pocket
- gusset for freedom of movement
- ergonomic pre shaped knees
- low leg rib cuffs
- toothbrush loops



Asphalt
10047584RFX



Redwood
10047586RFX



Bronze brown
10047585RFX



Brindle
10036371RFX





ANDALUSIA, SPAIN

These women's climbing trousers are subdued, breathable and resilient. Their narrowed fit is very comfortable, in part due to the flexible material used. They're just about made for climbing. Naturally they include features like a wide and comfortable waist cuff, a diamond crotch, shaped knees and legs with

elastic in the back to hold them fast above the ankle. What more could you wish for out on the rocks? Their loops for holding a large or small brush are an attractive element as well.



MASSONE

ALL YEAR

WOMEN'S SOLID PERFORMANCE CLIMBING PANTS

FABRIC

MAIN: 97% cotton 3% elastane
 SECONDARY: 88% polyester
 12% elastane

- breathable
- stretch
- durable

INFO

fit: straight
 size: 34-42

SIZE 36:

- weight: 315 g
- inseam length: 80 cm

FEATURES

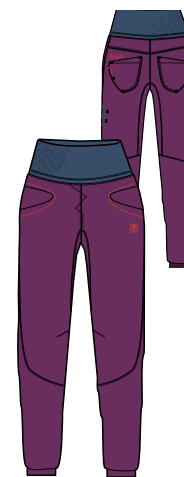
- wide convertible waistband with internal drawcord
- 2 front pockets
- 2 rear patch pockets
- gusset for freedom of movement
- preshaped knees
- elastic back low leg
- toothbrush loops



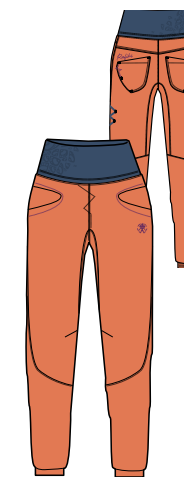
brittany blue
 10041576RFX



india ink
 10041579RFX



phlox
 10041580RFX



celosia orange
 10041577RFX

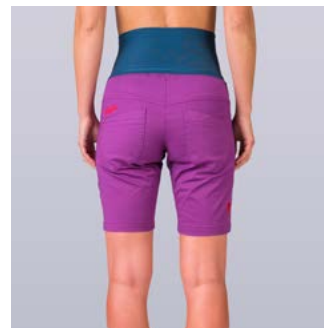




DĚČINSKÝ SNĚŽNÍK, CZECH REPUBLIC

Muriel are women's climbing shorts that are a must-have in the wardrobe of every keen climber. They look quite casual, yet they won't let you down when climbing. They're breathable, flexible - just awesome. The wide waist cuff and diamond crotch provide maximum comfort and don't restrict

movement. In these shorts, you'll feel great both during training and on an actual climb. The brush loops on the thigh are an interesting detail.



MURIEL **ALL YEAR**

WOMEN'S SOLID PERFORMANCE CLIMBING SHORTS

FABRIC

MAIN: 97% cotton 3% elastane
SECONDARY: 88% polyester
12% elastane

- breathable
- stretch
- durable

INFO

fit: straight
size: 32-42

SIZE 36:

- weight: 215 g
- inseam length: 24 cm

FEATURES

- wide convertible waistband with internal drawcord
- 2 front pockets
- 2 rear patch pockets
- gusset for freedom of movement
- toothbrush loops



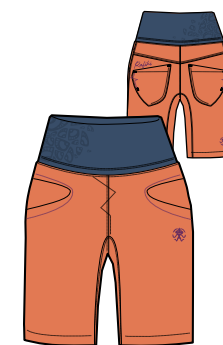
brittany blue
10041598RFX



india ink
10041601RFX



phlox
10041602RFX



celosia orange
10041599RFX

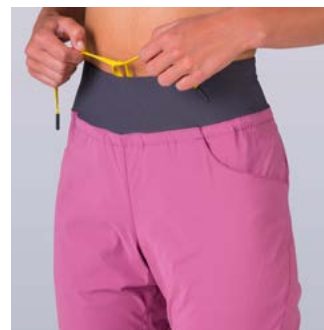
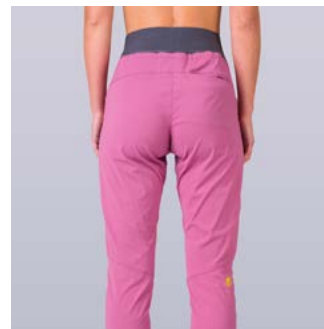




DĚČINSKÝ SNĚŽNÍK, CZECH REPUBLIC

Rafiki Femio are light climbing trousers from new durable and quick-drying material. Thanks to the elastic waist and leg endings they fit all types of body shapes. They are designed for all kinds of climbing

both indoor and outdoor or you can pack them up with you whether you go to a slackline park or a yoga lesson.



FEMIO ALL YEAR

WOMEN'S SUPER LIGHTWEIGHT MULTISPORT PANTS



FABRIC

MAIN: 94% polyamide 6% elastane
SECONDARY: 88% polyester
12% spandex

- breathable
- lightweight
- stretch
- quick dry

INFO

fit: straight
size: 34-42

SIZE 36:

- weight: 220 g
- inseam length: 80 cm

FEATURES

- wide elastic waistband
- waist internal drawcord
- hands and back pockets
- gusset for freedom of movement
- preshaped knees
- half elastic cuffs at bottom legs



rose wine
10041526RFX



brittany blue
10041524RFX



india ink
10041525RFX





ANDALUSIA, SPAIN

It's not just guys who want bouldering shorts with wide legs. The NOIA climbing shorts are here for girls and women who don't want to buy our men's shorts for their training anymore and there were not a few of you...

For all those who have been missing this piece for a long time, we have created these boy-fit climbing shorts.



NOIA ALL YEAR

WOMEN'S SUPER LIGHTWEIGHT MULTISPORT SHORTS



FABRIC

MAIN: 94% polyamide 6% elastane
SECONDARY: 88% polyester
12% spandex

- breathable
- lightweight
- stretch
- quick dry

INFO

fit: boyfriend
size: 32-42

SIZE 36:

- weight: 120 g
- inseam length: 20 cm

FEATURES

- wide elastic waistband
- waist internal drawcord
- 1 rear pocket
- gusset for freedom of movement
- toothbrush loops



rose wine
10041609RFX

brittany blue
10041606RFX

india ink
10041607RFX





LOUČOVICE, CZECH REPUBLIC

Stylish women's climbing sweatpants! You just need to have these in your wardrobe. We've narrowed the legs and finished them with cuffs so you won't

step on them, to make them comfortable for climbing. You can use the Badami both for outdoor bouldering and during evening sessions with friends.



BADAMI

WOMEN'S BASIC SWEAT PANTS

FABRIC

MAIN: 70% polyester 26% cotton
4% elastan

- breathable
- durable

INFO

fit: straight
size: 34-42

SIZE 36:
• weight: 515 g
• inseam length: 78 cm

FEATURES

- elastic waistband
- waist internal drawcord
- hand pockets
- patched rear pocket
- low leg rib cuffs



Blueberry
10047545RFX





RAFIKI MEN



LEONIDIO, GREECE

This men's Rafiki climbing down jacket is a must-have for any climbing backpack. It is definitely the warmest jacket from the Rafiki collection. It'll make you feel good and cosy and warm you up, both when belaying a fellow climber in autumn's freezing wind and during winter outdoor bouldering when temperatures drop below freezing. We have chosen high quality certified duck down with 650 cuin fill power (90/10). The Fuego is made of a lightweight windproof rip-stop material with a DWR treatment for better water resistance. The two-way zip

is ideal for easy belaying. The spacious front pockets are higher up and can be easily accessed when sitting in a harness. On cold days, you will appreciate the cosy microfleece inside the pockets for increased thermal comfort. The jacket has anatomically shaped sleeves, an inner pocket for small items, a stuff sack that it can be packed into, and the popular climbing grades chart inside. With a weight under half a kilo (M size), you don't have to worry it would be too heavy for your backpack. So where are you going climbing next?



FUEGO

MEN'S HIGH LOFT DOWN JACKET

FABRIC

MAIN: 100% nylon ripstop + DWR
 SECONDARY: 100% nylon ripstop
 INSULATION: Duck Down, fill power 650 cuin, feather ration 90/10, RDS certified

- water-repellent
- wind-resistant
- lightweight
- insulated
- YKK zippers



INFO

fit: regular
 size: S-XXL
 SIZE M:
 • weight: 515 g
 • back length: 74 cm

FEATURES

- 2-way main zipper with internal full length windproof flap
- 2 zippered main pockets with microfleece
- inner chest zipper pocket
- inner mesh pockets
- hood self adjustment
- elastic sleeve hems
- inner microfleece neck panel
- lycra forehead cuff
- low hem drawstring adjustment
- compression bag



Chili/lizard
10025524RFX

Insignia/chili
10025525RFX





TICINO, SWITZERLAND

Our Dante men's insulated jacket is based on a model that has been proven over the last years. It stands out with a number of features that you will undoubtedly appreciate as a climber. The two-way YKK zipper makes the jacket ideal for use when you don't want to freeze before your partner reaches the selected line. The jacket's outer material is windproof and also has a waterproof adjustment. The combination of duck feather and synthetic fibre ensures a much lower weight and the jacket is perfectly packable plus portable. We placed the feather part on the inside part of jacket to keep you nice and warm. Synthetic part is on the

outside, which has the effect of better usability in rain and wet environment. Plus, it protects the feather from soaking through and ensures you the maximum thermal comfort! For greater freedom of movement of your hands, we have placed stretch wedges in the armpits. The Dante has two side pockets and one chest pocket, also mesh pockets inside to fit your climbing shoes. And finally, our time-tested classic: a climbing grade conversion chart, so you don't have to count on fingers like in prehistoric times. Whether you're spending an autumn weekend in local crag or wandering the streets on your way to the climbing gym, Dante will never let you down!



DANTE

MEN'S LIGHTWEIGHT INSULATED JACKET



FABRIC

MAIN: 100% nylon ripstop + DWR
 SECONDARY: 95% polyester 5% elastane
 INSULATION: 50% Duck Down, fill power 650 cuin, feather ration 90/10, RDS certified + 50% biofiber Polyester

- water-repellent
- wind-resistant
- insulated
- YKK zippers



INFO

fit: straight
 size: S-XXL
 SIZE M:
 • weight: 545 g
 • back length: 70 cm

FEATURES

- 2-way main zipper with internal full length windproof flap
- polarstretch underarm parts
- 2 zippered main pockets
- zippered chest pocket
- fixed hood with elastic binding and regulation
- low hem and cuffs with elastic binding
- ergonomic shaped sleeves
- inner mesh pockets
- compression bag



Castlerock
10014916RFX



Cress green/castlerock
10047548RFX



Blue nights
10047547RFX

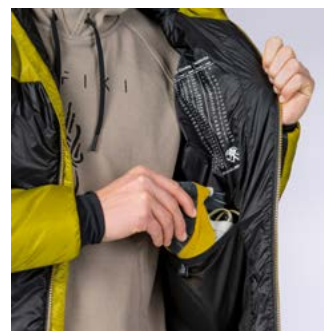
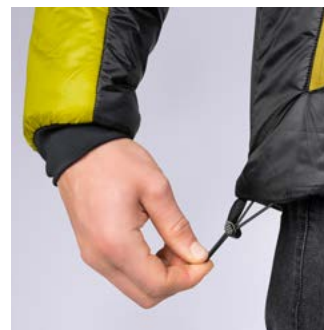




LOUČOVICE, CZECH REPUBLIC

This climbing insulated jacket with an asymmetric pattern is really lightweight and anatomically shaped and you'll love it for autumn rock climbing trips. It features the proven and environmentally sustainable DuPont Sorona insulation filling, which has a minimum of 30% natural content (corn husk) and is also energy friendly to produce. The outer rip-stop material has a DWR treatment for better water resistance. The jacket has YKK zips, lycra cuffs, mesh pockets

for climbing shoes, a drawcord adjustable hood, zip chest pocket, climbing grades chart and transport case. It is simply a jacket you'll love and won't want to take off.



FITZ

MEN'S LIGHTWEIGHT COMPACT INSULATED JACKET



FABRIC

MAIN: 100% nylon ripstop + DWR
 SECONDARY: 100% nylon ripstop
 INSULATION: biofiber Polyester

- water-repellent
- wind-resistant
- insulated
- YKK zippers



INFO

fit: straight
 size: S-XXL

SIZE M:

- weight: 490 g
- back length: 74 cm

FEATURES

- 2-way main zipper with internal full length windproof flap
- 2 zippered main pockets
- zippered chest pocket
- fixed hood with regulation
- low hem with regulation
- sleeve cuffs
- ergonomic shaped sleeves
- forehead lycra cuff



Raven
10036377RFX



Cress green/raven
10036378RFX



Tapestry/nights
10036379RFX

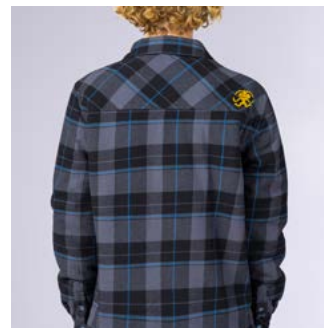




LOUČOVICE, CZECH REPUBLIC

Combination of style and function are the hallmarks of the new unisex insulated flannel shirt. Crafted from cotton with polyester furry insulation on the inside, this versatile piece ensures warmth without compromising on freedom of movement. Our designers really went all out with this one and combined two successful styles - a furry sweatshirt and a flannel shirt - into one product. The result is a jacket you can't buy anywhere else. Whether you're embarking

on a climbing trip or navigating the city streets during autumn, "Karun" guarantees a perfect blend of practicality and style.



KARUN

UNI MIDWEIGHT FLANNEL INSULATED JACKET

FABRIC

MAIN: 100% cotton
 SECONDARY: 100% polyester
 INSULATION: 100% polyester

- insulated

INFO

fit: regular
 size: XS-XXL

SIZE M:

- weight: 710 g
- back length: 74 cm

FEATURES

- hand pockets
- chest pockets w/ single button flap closure
- central button opening
- lined body and sleeves



Jalapeno plaid
 10036380RFX



Pirate plaid
 10036381RFX





LOUČOVICE, CZECH REPUBLIC

Original colour combinations, a sophisticated climbing cut, and smart technical features are hallmarks of the Ascent men's sweatshirt. It is made from lightweight, functional Polarstretch Grid with a system of grooves going through the solid part of the material which makes it moisture-wicking and breathable yet warm. It also offers excellent packability. Thanks to the material used, the sweatshirt can be used as a second layer, not only for climbing but also for other outdoor sports. Its two-way YKK zip makes it easy to

belay your climbing buddy without the need to put the sweatshirt under your harness. A popular piece, which is a constant in our collection and which is also worn by the Czech national sports climbing team.



ASCENT

MEN'S TECHNICAL FULL-ZIP HOODY

FABRIC

MAIN: 95% polyester 5% spandex
(single grid polar fleece)

- warm
- breathable
- lightweight
- stretch
- quick dry
- YKK zippers

INFO

fit: slim
size: S-XXL

SIZE M:

- weight: 415 g
- back length: 65 cm



FEATURES

- 2-way main zipper
- 2 zippered main pockets
- tailored hood with elastic binding
- low hem and cuffs with elastic binding
- sleeve cuffs
- comfortable fit through flat lock seams



Blue nights/tapestry/olive
10036382RFX



Olive oil/tapestry
10036383RFX



Tapestry/nights
10036384RFX



Crushed violets/nights
10036385RFX





DIVOKÁ ŠÁRKA, CZECH REPUBLIC

Rafiki Hulk is a perfect sweatshirt you won't want to take off. This is a men's full-zip stylish 'furry' hooded sweatshirt made of the Polar Stretch Loft brushed fleece that has excellent thermal insulation

properties. This sweatshirt will really keep you warm and cozy. So don't forget to pack it with you on a climbing trip, there's definitely room in your pack for it.



HULK

MEN'S HAIRY FLEECE HOODY

FABRIC

MAIN: 100% polyester
SECONDARY: 88% polyester
12% spandex

- warm
- lightweight
- YKK zippers



INFO

fit: regular
size: S-XXL

SIZE M:

- weight: 575 g
- back length: 69 cm

FEATURES

- fixed hood with elastic binding
- full zipper opening
- kangaroo pocket
- chest zipper pocket
- low hem with elastic binding
- sleeve elastic cuffs



Teal green
10047558RFX

Black bean
10047557RFX





LOUČOVICE, CZECH REPUBLIC

A men's stylish Rafiki hoodie that you'll love, whether you're a die-hard boulderer, rock climber, slackliner or sand rock climber. This sweatshirt has a practical higher collar with a drawcord and a kangaroo pocket

with zips so that you don't lose your climbing tape, cell phone or other valuables. It is simply a climbing must-have in your backpack.



PANTERA

MEN'S COMFORTABLE HOODY

FABRIC

MAIN: 70% polyester 26% cotton
4% elastan

- breathable
- durable
- YKK zippers

INFO

fit: regular
size: S-XXL

SIZE M:

- weight: 675 g
- back length: 69 cm



FEATURES

- fixed hood with regulation
- kangaroo pocket with zipper opening
- sleeve hem with elastic binding
- ribbed bottom hem



Purple plumeria/blueberry
10047575RFX

Raven
10025538RFX

Dijon
10047574RFX





DĚČINSKÝ SNĚŽNÍK, CZECH REPUBLIC

Climbers will most appreciate this light and breathable sweatshirt made from organic cotton during warmup exercises or while warming back up after a climb. But you can also climb in it, and the use

of elastane keeps it sufficiently flexible. The practical thumb loop will never cut into you or pull at you. The high-contrast hood and drawstrings immediately hint at the original Rafiki style.



TRAVERSE ALL YEAR

MEN'S LIGHTWEIGHT WARMUP ORGANIC HOODY

FABRIC

MAIN: 92% organic cotton 8% elastane

- breathable
- stretch
- organic
- soft

INFO

fit: regular
size: XS-XXL

SIZE M:

- weight: 320 g
- back length: 69 cm

FEATURES

- hood adjustment
- distinct Rafiki sign



avocado/ink
10041635RFX

ensign blue/ink
10041636RFX

india ink
10041637RFX





DIVOKÁ ŠÁRKA, CZECH REPUBLIC

Virage is perfect for all climbers who like to add a touch of casual elegance to their outfit. This medium-weight flannel shirt will serve you great as a second layer instead of a sweatshirt. For this purpose, it has two side pockets and, as usually

shirts do, two chest pockets with a flap. Small gussets are inserted in the armpit areas for better range of motion and maximum freedom of movement. The sleeve cuffs can be set in two positions.



VIRAGE

MEN'S MIDWEIGHT FLANNEL SHIRT

FABRIC

MAIN: 100% cotton (yarn-dyed plaid twill)

- breathable

INFO

fit: regular
size: S-XXL

SIZE M:

- weight: 440 g
- back length: 74 cm

FEATURES

- hand pockets
- chest pockets w/ single button flap closure
- under arm inseam gusset panel
- sleeve opening and regulation



Lagoon plaid
10047592RFX

Monument plaid
10047593RFX





DIVOKÁ ŠÁRKA, CZECH REPUBLIC

A T-shirt made of corn? Why not! Pitone is a long-sleeved climbing T-shirt made of Du-Pont Sorona, an eco-friendly corn fibre that we have used to replace elastane. This T-shirt stands out with its

attractive colourful sleeves, round neck, and high stretch material. Definitely a T-shirt that is great for both warm-up and outdoor climbing.



PITONE

MEN'S LONGSLEEVE T-SHIRT

FABRIC

MAIN: 64% Rayon 36% Sorona

- breathable
- stretch



INFO

fit: regular
size: S-XXL

SIZE M:

- weight: 315 g
- back length: 69 cm

FEATURES

- round neckline
- sleeves with dividing seams
- front print



Climbing ivy/violet
10047577RFX

Deep jungle/ivy
10047578RFX





MANDALA BOULDERHALLE, GERMANY

Introducing our new men's t-shirt made from 100% organic cotton, offering a comfortable and soft feel on the skin. Available in a wide range of colors accompanied with designs that not only have climbing as an inspiration, but go even further. We started with Frankenjura and used the famous routes as an inspiration for the story. Who would not like to take an action in the "Action direct" and finish it successfully, or have a try on a route "Chasin

the Trane" in the footsteps of no other than famous John Bachar? This shirt is perfect for those who want to express their love for the climbing sport.



ARCOS ALL YEAR

MEN'S ORGANIC SHORT SLEEVE TEE

FABRIC

MAIN: 100% organic cotton

- breathable
- lightweight
- organic

INFO

fit: regular
size: XS-XXL

SIZE M:

- weight: 135 g
- back length: 68 cm

FEATURES

- eco fabric
- prints variation



brittany blue
10041493RFX

avocado
10041492RFX

red clay
10041497RFX

ensign blue
10041494RFX

iced coffee
10041495RFX





ARCO, ITALY

Introducing the GRANITE t-Shirt for men, made with 100% organic cotton that is both eco-friendly and breathable. The material is soft to the touch and comfortable to wear on any climbing trip. With an original combination of colors on the sleeves, paired with a distinctive climbing design, this t-shirt

is perfect for those who want to stand out! Whether you're on a rest-day or pushing your limits on the rock, the GRANITE will be your go-to choice! So fight the GRAVITY – wear the GRANITE!



GRANITE ALL YEAR

MEN'S LIGHTWEIGHT ORGANIC SHORT SLEEVE TEE

FABRIC

MAIN: 100% organic cotton

- breathable
- lightweight
- organic

INFO

fit: regular
size: XS-XXL

SIZE M:

- weight: 120 g
- back length: 68 cm

FEATURES

- eco fabric
- prints variation



ensign blue/ink
10041540RFX

brittany blue/ink/clay
10041539RFX





KALYMNOS, GREECE

Lightweight and breathable mono-chrome Rafiki ZONE T-shirt in earthy colors inspired by the mixed forests around the popular sandstone climbing region in Czechia. The environmentally sustainable "Lenzing Modal" material is its main advantage! Totally eco-friendly fabric, which is the way of the future and the years to come! Lenzing Modal is made from beech wood in a small family company in Austria. And not only, but also because of that, you will feel an absolutely natural touch! Breathable, lightweight,

stretch, soft, and comfy! It is definitely a piece you'll love for training and also for going to the rocks. It's up to you which way you choose to go. Feel natural in an eco-natural ZONE T-shirt!



ZONE ALL YEAR



MEN'S PERFORMANCE LIGHTWEIGHT SHORT SLEEVE TEE

FABRIC

MAIN: 50% modal 50% organic cotton

- breathable
- lightweight
- stretch
- soft
- wicking



INFO

fit: straight
size: S-XXL

SIZE M:

- weight: 115 g
- back length: 68 cm

FEATURES

- eco fabric
- natural touch



india ink
10041646RFX

aquifer
10041645RFX

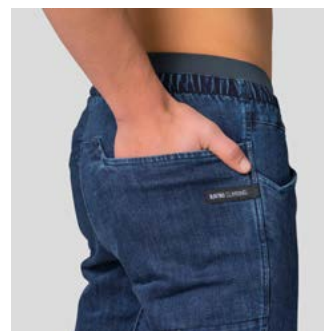




DOLOMITES, ITALY

You'll love these men's climbing jeans overtrousers with an elastic waist. They're great for climbing in cold weather, but you'll also look great in them when going to the climbing gym, at work, or wandering around town. We've gone to great lengths to make sure the denim is perfect. The

Torre jeans also feature distinctive pockets, and the bottom hem of the leg is elastic, making it easy to put the jeans on, even if you're wearing climbing shoes.



TORRE

MEN'S CLIMBING DENIM PANTS

FABRIC

MAIN: 55% cotton 23% Rayon
20% polyester 2% spandex
SECONDARY: 88% polyester
12% elastane

- comfortable
- stretch
- durable

INFO

fit: straight
size: S-XXL

SIZE M:

- weight: 520 g
- inseam length: 79 cm

FEATURES

- elastic waistband with internal drawcord
- hand pockets
- rear pocket
- gusset for freedom of movement
- ergonomic pre shaped knees
- brush pocket
- bottom leg drawstring regulation



Dark blue denim
10025554RFX





LOUČOVICE, CZECH REPUBLIC

Comfortable denim trousers in a classic five-pocket style that you can take anywhere. They look formal, but are incredibly stretchy, so you can easily handle even difficult climbing moves in them. The combination of synthetic fibres and cotton gives the trousers durability and flexibility. The specifically shaped gusset sewn into the crotch and the shaped knees

ensure that they won't restrict your movement in any way. If you're looking for comfortable trousers for everyday wear that won't disappoint even when used for sport, look no further, because that's exactly what the Aran jeans will do for you.



ARAN

MEN'S DENIM PANTS

FABRIC

MAIN: 67% cotton 29% polyester
3% rayon 1% spandex

- comfortable
- stretch
- durable
- YKK zippers

INFO

fit: straight
size: S-XXL

SIZE M:

- weight: 535 g
- inseam length: 81 cm



Dark blue denim
10036393RFX

Black denim
10036394RFX

FEATURES

- hand pockets
- rear pockets
- gusset for freedom of movement
- ergonomic pre shaped knees
- waistwaistbelt loops
- fly opening
- waist drawstring adjustment





DĚČÍNSKÝ SNĚŽNÍK, CZECH REPUBLIC

These stylish men's climbing jeans are literally indistinguishable from traditional work trousers. They have an elastic waist, but you'll find belt loops as well. Their diamond crotch and shaped knees guarantee a climber won't have to fear any awkward steps along their way. Naturally a discreet brush pocket is included too. These trousers are deliberately extended in length and can be either rolled up

or shortened as needed using the markings we've provided. This immediately eliminates the problem of overly long trouser legs.



CRIMP ALL YEAR

MEN'S LIGHTWEIGHT CLIMBING JEANS FOR ALL DAY COMFORT



FABRIC

MAIN: 64% cotton 29,5% polyester
3,5% rayon 2,5% elastane

- breathable
- lightweight
- stretch
- quick dry
- YKK zipper

INFO

fit: straight
size: S-XXL

SIZE M:

- weight: 405 g
- inseam length: 87 cm

FEATURES

- 2 front top entry pockets
- 2 rear patch pockets
- elastic waistband with regulation
- gusset for freedom of movement
- double preshaped knee parts
- waistbelt loops
- toothbrush pocket
- fly opening
- cuttable leg length

YKK®

CARRY OVER



denim
10019997RFX





DĚČINSKÝ SNĚŽNÍK, CZECH REPUBLIC

Denim shorts with an elastic waistband that will make you feel good on the wall and dazzle everybody at work. No, really, these are shorts of a proven cut that even our best athletes use. We've added

functional details like a brush pouch and drawstring waistband and sewed them for you in Rafiki denim. Remember, denim doesn't have to be just pants.



BETA ALL YEAR

MEN'S LIGHTWEIGHT CLIMBING DENIM SHORTS FOR ALL DAY COMFORT



FABRIC

MAIN: 64% cotton 29,5% polyester
3,5% rayon 2,5% elastane

- breathable
- lightweight
- stretch
- quick dry

INFO

fit: regular
size: S-XXL

SIZE M:

- weight: 255 g
- inseam length: 26 cm

FEATURES

- 2 front pockets
- 1 rear patch pockets
- elastic logo waistband with regulation
- full inseam gusset for freedom of movement
- back waistbelt double loop
- toothbrush pocket



denim
10029652RFX





DIVOKÁ ŠÁRKA, CZECH REPUBLIC

Whether you're hitting a climbing wall, going to work, or traveling to your next climbing challenge, you'll feel great in these stylish corduroy trousers. We've combined two different materials to make them – soft corduroy and a more durable material for stressed areas. Two large back pockets and two spacious top-entry front pockets make the Ledge trousers incredibly comfortable to wear. With pre-shaped

knees and a sewn-in inner gusset at the crotch, they won't restrict any active movement. The waist has belt loops and there is a brush pocket on the side.



LEDGE

MEN'S PERFORMANCE CORD PANTS

FABRIC

MAIN: 98% cotton 2% elastane
SECONDARY: 97% cotton 3% elastane (cord)

- breathable
- stretch
- YKK zippers

INFO

fit: straight
size: S-XXL

SIZE M:

- weight: 545 g
- inseam length: 81 cm



FEATURES

- 2 front top entry pockets
- 2 large rear patched pockets
- elastic adjustable waistband
- fly opening
- gusset
- pre-shaped knee
- bush pocket
- waistbelt loops



Asphalt
10016294RFX



Bronze brown
10047562RFX



Brindle
10047561RFX





LEONIDIO, GREECE

A proper pair of climbing pants, that will hold you up when you're holding up the crimp (or salty-flimsy sandstone jug)! One color combination. Simplicity. Functionality. Comfort. Performance. Nothing more, nothing less! In our view rather more, than less. Shaped knees, reinforced legs, sporty elastic waistband at the back part, comfortable hand pockets where your strong fingers may rest. Our tested combination of denim trousers with stretch twill bonded cotton. And of course, for your absolutely

high motivation, there's a "Rafiki" decoration, contrast stitching and to let everyone know you're serious as hell about your climbing: "Rafiki climbing" sign on the back pocket. So just throw them on and go right ahead for your next send!



LIZARD NEW

MEN'S HYBRID DENIM PANTS

FABRIC

MAIN: 67% cotton, 29 % polyester,
3% Rayon, 1% spandex
SECONDARY: 97% cotton 3% elastane

- comfortable
- stretch
- durable
- YKK zippers

YKK®

INFO

fit: straight
size: S-XXL

SIZE M:

- weight: 490 g
- inseam length: 81 cm

FEATURES

- fly opening
- 2 front pockets
- 2 rear pockets
- waistbelt loops
- toothbrush pocket
- ergonomic shaped knee



Asphalt denim
10047567RFX





DIVOKÁ ŠÁRKA, CZECH REPUBLIC

These stylish cotton climbing trousers with a more informal look will make every climber happy. The cotton material with twill weave and elastane ensures that the trousers will withstand climbing challenge. The trousers are tapered and perfected to the last detail. They have a climbing gusset in the crotch, partially elastic waistband, pre-shaped knees, a brush pocket, belt loops and internal drawstrings. We've tested the Rockland trousers while climbing, but

they're still waiting for a bouldering trip to the South African Rocklands, so will you be the first to take them there?



ROCKLAND

MEN'S PERFORMANCE CLIMBING PANTS

FABRIC

MAIN: 98% cotton 2% Spandex
SECONDARY: 95% cotton 5% Spandex

- durable
- stretch
- YKK zippers

INFO

fit: straight
size: S-XXL

SIZE M:

- weight: 610 g
- inseam length: 82 cm



FEATURES

- adjustable partly elastic waistband
- 2 front pockets
- rear pocket
- gusset for freedom of movement
- ergonomic pre shaped knees
- waistwaistbelt loops
- toothbrush loops



Asphalt
10036398RFX



Bronze brown
10047579RFX



Redwood
10047580RFX





DIVOKÁ ŠÁRKA, CZECH REPUBLIC

Climbing trousers with a more civilian look that will last. The Rodellar trousers are made from a firm cotton fabric that can withstand rough treatment. This material has increased abrasion resistance, but thanks to added elastane, it does not restrict movement. The trousers have two spacious front and two back pockets. A zip thigh pocket is practical for small items. They also feature a brush loop

and drawstrings in the legs. They are just perfect not only for the city, but also for serious climbing and bouldering.



RODELLAR

MEN'S SOLID PERFORMANCE CLIMBING PANTS FOR ALL DAY COMFORT



FABRIC

MAIN: 97% cotton 3% elastane

- durable
- stretch
- YKK zippers



INFO

fit: regular
size: S-XXL

SIZE M:

- weight: 620 g
- inseam length: 84 cm

FEATURES

- adjustable elastic waistband
- 2 front top entry pockets
- 2 large low set rear pockets
- gusset for freedom of movement
- ergonomic pre shaped knees
- bottom leg regulation
- zippered side pocket
- brush pocket
- waistwaistbelt loops



Brindle
10047582RFX



Asphalt
10025557RFX

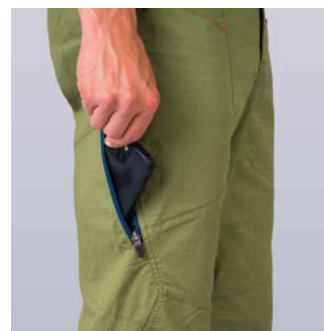




DĚČINSKÝ SNĚŽNÍK, CZECH REPUBLIC

The men's climbing trousers took the best out of the Megos shorts and belong among Rafiki top products. They are function trousers you can wear all day long. The combination of cotton and elastane is firm but stretchy and the trousers are ideal for climbing, with double pre-shaped knees enhancing durability. Thanks to the elaborated fit you have complete freedom of movement. Spacious front pockets can hold all your essentials, a tooth-brush pocket is a must-have and you can easily stow your phone into a little thigh

side zip pocket which you can easily access even when sitting in a harness. The trousers have a fly, elastic waist and belt loops.



CRAG ALL YEAR

MEN'S PERFORMANCE CLIMBING PANTS

FABRIC

MAIN: 97% cotton 3% elastane

- breathable
- durable
- stretch
- YKK zippers



INFO

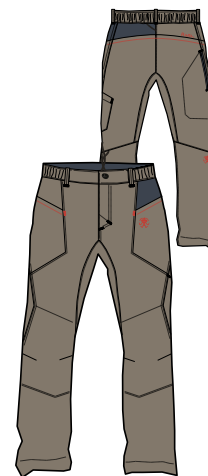
fit: regular
size: S-XXL

SIZE M:

- weight: 415 g
- inseam length: 83 cm

FEATURES

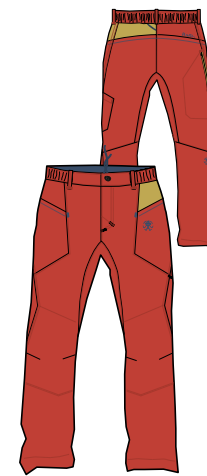
- 2 front top entry pockets
- zippered side pocket
- elastic waistband with regulation
- gusset for freedom of movement
- double knee parts
- waistbelt loops
- low hem with regulation
- brush pocket
- fly opening
- ergonomic pre shaped knees



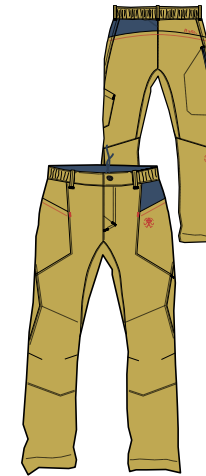
brindle/ink
10041508RFX



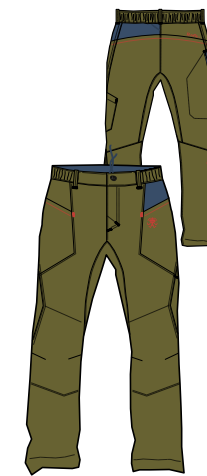
ensign blue/clay
10041510RFX



red clay/cress
10041511RFX

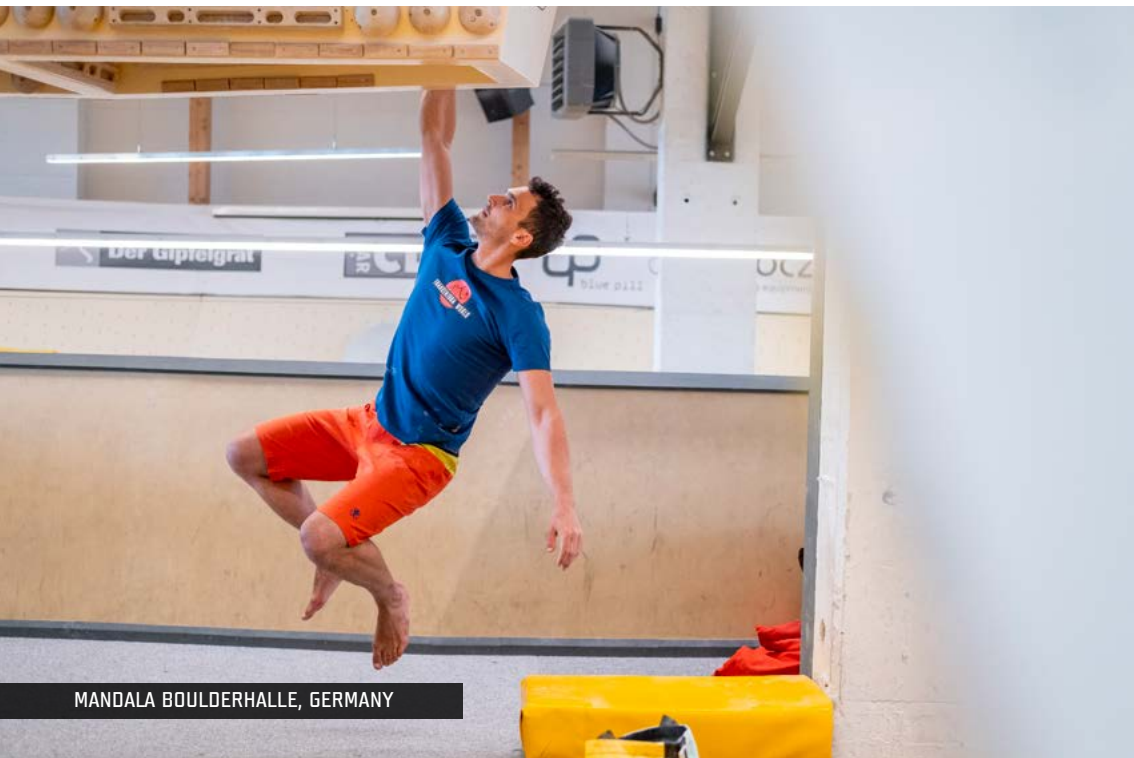


cress green/ensign
10041509RFX



avocado/ensign
10041507RFX

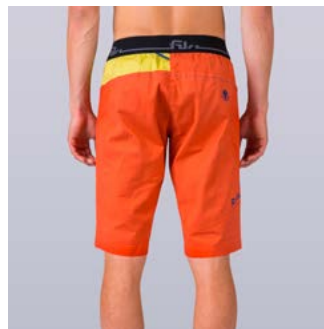




MANDALA BOULDERHALLE, GERMANY

Rafiki Megos are men's climbing shorts which are a must-have for all bouldering enthusiasts. Cotton with elastane, the elastic waist and a time-proven fit

guarantee you can fully rely on these shorts whatever you do.



MEGOS ALL YEAR

MEN'S SOLID PERFORMANCE CLIMBING SHORTS FOR ALL DAY COMFORT

FABRIC

MAIN: 97% cotton 3% elastane

- breathable
- durable
- stretch

INFO

fit: regular
size: XS-XL

SIZE M:

- weight: 225 g
- inseam length: 31 cm

FEATURES

- elastic waistband with internal drawcord
- hand pockets
- full inseam gusset for freedom of movement
- side pockets for brush
- back loop detail



ensign blue/clay
10041583RFX

avocado/ensign
10041581RFX

red clay/crest
10041584RFX

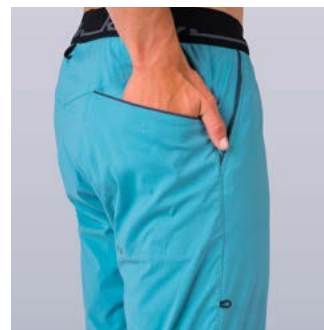
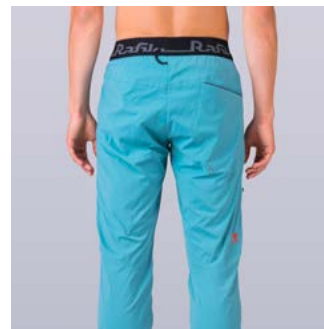




DĚČINSKÝ SNĚŽNÍK, CZECH REPUBLIC

Light, airy and absolutely comfortable climbing trousers, which hold the waist perfectly thanks to a pleasant elastic drawstring. You can throw them on when you're aiming for the rocks, as they're great friends with the rope, but they'll also thrill on challenging bouldering moves, and it doesn't matter if you're inside on plywood or outside on a granite block or sandstone boulder! Of course, there's a toothbrush pocket and a chalk bag hanging loop, but you'll also love the functional leg drawstring

that keeps your pants from flopping over your climbing pants when you're heeling in your latest project! In short, stylish pants that have "drive" and you'll love them for both climbing and everyday wear.



DRIVE **ALL YEAR**

MEN'S SUPER LIGHTWEIGHT MULTISPORT PANTS



FABRIC

MAIN: 94% polyamide 6% elastane

- breathable
- lightweight
- stretch
- quick dry

INFO

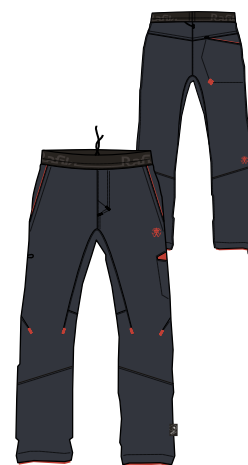
fit: straight
size: XS-XL

SIZE M:

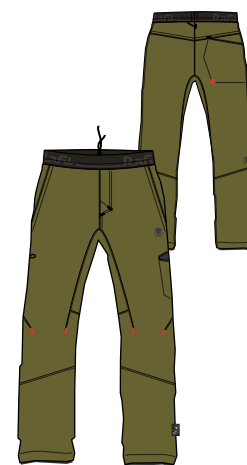
- weight: 265 g
- inseam length: 82 cm

FEATURES

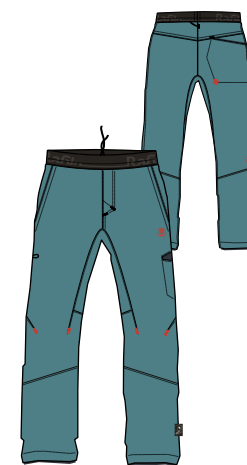
- wide elastic waistband
- waist internal drawcord
- hand pockets + 1 rear pocket
- gusset for freedom of movement
- ergonomic pre shaped knees
- brush loop and pocket
- bottom leg drawstring regulation
- back loop detail



india ink
10041517RFX



avocado
10041515RFX



brittany blue
10041516RFX

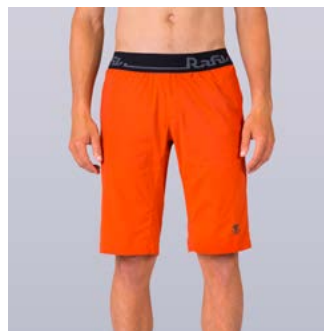




PEILSTEIN, AUSTRIA

Rafiki Lead are men's climbing shorts from our technical ultralight programme. They are made from light, durable and quick-drying material. These shorts

are just a must-have for hot days in the mountains or indoor bouldering.



LEAD II ALL YEAR

MEN'S SUPER LIGHTWEIGHT MULTISPORT SHORTS



FABRIC

MAIN: 94% polyamide 6% elastane

- breathable
- lightweight
- stretch
- quick dry

INFO

fit: regular
size: XS-XL

SIZE M:

- weight: 180 g
- inseam length: 31 cm

FEATURES

- wide elastic waistband
- waist internal drawcord
- side pockets + 1 rear pocket
- full inseam gusset for freedom of movement
- back loop detail



india ink
10041565RFX

red clay
10041566RFX

avocado
10041563RFX

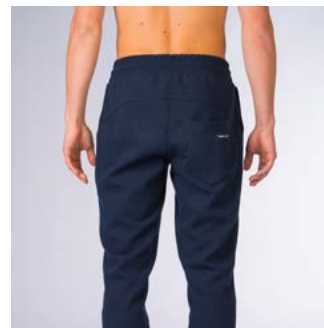




LOUČOVICE, CZECH REPUBLIC

Stylish men's climbing sweatpants! You just need to have these in your wardrobe. We've narrowed the legs and finished them with cuffs so you won't step

on them, to make them comfortable for climbing. You can use the Durga both for outdoor bouldering and during evening sessions with friends.



DURGA

MEN'S BASIC SWEAT PANTS

FABRIC

MAIN: 70% polyester 26% cotton
4% elastan

- breathable
- durable

INFO

fit: straight
size: S-XXL

SIZE M:

- weight: 580 g
- inseam length: 82 cm

FEATURES

- elastic waistband
- waist internal drawcord
- hand pockets
- patched rear pocket
- low leg rib cuffs



Blueberry
10047550RFX

Dijon
10047551RFX





RAFIKI SHOES



We have added the Rafiki MONTE M sturdy street approach shoes to the collection for climbers who are looking for shoes that will serve them well as approach shoes for shorter and easier climbing missions. We've designed them to combine durability and comfort and equipped them with a sticky rubber outsole that provides a great grip on any surface. The premium suede leather upper will offer good weather resistance, while the protective rubber toe and heel cap will protect your feet on tougher terrain. The lace-to-toe design provides a precision fit and sure feel even on the most unstable terrain. The Monte also includes webbing loops for clipping or stowing the shoes when the trail ends and the climbing begins. Whether you're an experienced climber or just a climbing newbie, they will quickly become your favorite all-purpose shoe. With its premium quality and unbeatable design, the Rafiki MONTE M is sure to be a valuable addition to your shoe rack. So take them with you to the crags under your unfinished project!



MONTE M

MEN'S STURDY STREET BOOTS FOR CLIMBERS DESIGNED FOR THE CITY, AND AS APPROACH SHOES FOR SHORTER AND EASIER CLIMBING MISSIONS

DESCRIPTION

MAIN: Durable leather upper
 MIDSOLE: molded EVA midsole
 OUTSOLE: sticky outsole from RFK street rubber

- durable
- breathable
- weather resistant

INFO

size: 41-47

SIZE 42:

- weight: 355 g
- insole length (MP): 27,1 cm

FEATURES

- durable leather upper
- super comfortable molded EVA midsole
- extended lacing „lace to toe“
- rubber toe protection
- heel cup for higher durability
- webbing loops for clipping options
- sticky rubber outsole inspired by climbing shoes for maximum grip
- climbing forefoot inspired by climbing shoes for better grip



golden olive
10041590RFX

corsair
10041588RFX





MASSI M

Rafiki MASSI M street shoes are designed for all climbers who need comfortable and durable shoes for everyday use. The sticky rubber outsole provides excellent grip, while the premium suede leather upper ensures weather resistance and constant comfort. Low rubber toe protection and the toe shape of the Massi shoes are inspired by climbing shoe construction and allow for precise toe placement if you decide to challenge some of that urban bouldering on your way to work. The specially designed tongue, which is sewn tightly not only at the end but all along one side of the shoe, provides a great degree of comfort and also requires no additional adjustment. The strap loops make it easy to clip on and store the boots, making them a versatile choice for any climber. Whether you're heading to the local climbing wall or just running daily errands, the Rafiki MASSI M definitely won't let you down even in unstable terrain. Their combination of style, durability, and comfort make them the perfect addition to your shoe closet. So don't hesitate to try them out on your own feet!



MASSI M

MEN'S HYBRID STREET SHOES FOR CLIMBERS INSPIRED BY CLASSIC APPROACH SHOES

DESCRIPTION

MAIN: Durable leather upper
 MIDSOLE: molded EVA midsole
 OUTSOLE: sticky outsole from RFK street rubber

- durable
- breathable
- weather resistant

INFO

size: 41-47

SIZE 42:

- weight: 350 g
- insole length (MP): 27,1 cm

FEATURES

- durable leather upper
- super comfortable molded EVA midsole
- rubber toe protection
- webbing loops for clipping options
- sticky rubber outsole inspired by climbing shoes for maximum grip
- climbing forefoot inspired by climbing shoes for better grip



citadel/magnet
10041570RFX

brindle/magnet
10041572RFX





ACCESS M

Designed for durability and comfort the Rafiki ACCESS M hybrid street approach shoes for climbers feature a sticky rubber sole that provides great grip on any surface. The premium suede leather upper offers both weather resistance and comfort, while the low rubber toe cap will protect your toe in tougher terrain. The highlight feature of the shoe is the collapsible heel, which allows you to wear the shoes just like you would have your casual slippers, without having to worry about ruining them, which is practical for both climbing and bouldering. The special design of the tongue, fixed on one side ensures a comfortable fit that doesn't require adjusting, and the webbing loop allows for easy clipping or stowing. These shoes are perfect for everyday use and won't disappoint in unstable terrain, making them a versatile addition to any climber's shoe collection. Whether you're headed to the local gym, crag or just exploring the city, the Rafiki ACCESS M street approach shoes will keep you comfortable and stylish all day long.



ACCESS M

MEN'S HYBRID STREET SHOES FOR CLIMBERS WITH A STEP-IN HEEL

DESCRIPTION

MAIN: Durable leather upper
 MIDSOLE: molded EVA midsole
 OUTSOLE: sticky outsole from RFK street rubber

- durable
- breathable
- weather resistant

INFO

size: 41-47

SIZE 42:

- weight: 345 g
- insole length (MP): 27,1 cm

FEATURES

- durable leather upper
- super comfortable molded EVA midsole
- collapsible heel for easy use at the gym or crag
- rubber toe protection
- webbing loop for clipping options
- sticky rubber outsole inspired by climbing shoes for maximum grip
- climbing forefoot inspired by climbing shoes for better grip



golden olive/smoked
10041481RFX



corsair/magnet
10041480RFX



brindle/magnet
10041482RFX





MONTE W

We have added the Rafiki MONTE W sturdy street approach shoes to the collection for climbers who are looking for shoes that will serve them well as approach shoes for shorter and easier climbing missions. We've designed them to combine durability and comfort and equipped them with a sticky rubber outsole that provides a great grip on any surface. The premium suede leather upper will offer good weather resistance, while the protective rubber toe and heel cap will protect your feet on tougher terrain. The lace-to-toe design provides a precision fit and sure feel even on the most unstable terrain. The Monte also includes webbing loops for clipping or stowing the shoes when the trail ends and the climbing begins. Whether you're an experienced climber or just a climbing newbie, they will quickly become your favorite all-purpose shoe. With its premium quality and unbeatable design, the Rafiki MONTE W is sure to be a valuable addition to your shoe rack. So take them with you to the crags under your unfinished project!



MONTE W

WOMEN'S STURDY STREET BOOTS FOR CLIMBERS DESIGNED FOR THE CITY, AND AS APPROACH SHOES FOR SHORTER AND EASIER CLIMBING MISSIONS

DESCRIPTION

MAIN: Durable leather upper
 MIDSOLE: molded EVA midsole
 OUTSOLE: sticky outsole from RFX street rubber

- durable
- breathable
- weather resistant

INFO

size: 37-42

SIZE 42:

- weight: 355 g
- insole length (MP): 27,1 cm

FEATURES

- durable leather upper
- super comfortable molded EVA midsole
- extended lacing „lace to toe“
- rubber toe protection
- heel cup for higher durability
- webbing loops for clipping options
- sticky rubber outsole inspired by climbing shoes for maximum grip
- climbing forefoot inspired by climbing shoes for better grip



twilight mauve
10041593RFX

arona
10041591RFX





MASSI W

Rafiki MASSI W street shoes are designed for all climbers who need comfortable and durable shoes for everyday use. The sticky rubber outsole provides excellent grip, while the premium suede leather upper ensures weather resistance and constant comfort. Low rubber toe protection and the toe shape of the Massi shoes are inspired by climbing shoe construction and allow for precise toe placement if you decide to challenge some of that urban bouldering on your way to work. The specially designed tongue, which is sewn tightly not only at the end but all along one side of the shoe, provides a great degree of comfort and also requires no additional adjustment. The strap loops make it easy to clip on and store the boots, making them a versatile choice for any climber. Whether you're heading to the local climbing wall or just running daily errands, the Rafiki MASSI W definitely won't let you down even in unstable terrain. Their combination of style, durability, and comfort make them the perfect addition to your shoe closet. So don't hesitate to try them out on your own feet!



MASSI W

WOMEN'S HYBRID STREET SHOES FOR CLIMBERS INSPIRED BY CLASSIC APPROACH SHOES

DESCRIPTION

MAIN: Durable leather upper
 MIDSOLE: molded EVA midsole
 OUTSOLE: sticky outsole from RFK street rubber

- durable
- breathable
- weather resistant

INFO

size: 37-42

SIZE 41:

- weight: 350 g
- insole length (MP): 27,1 cm

FEATURES

- durable leather upper
- super comfortable molded EVA midsole
- rubber toe protection
- webbing loops for clipping options
- sticky rubber outsole inspired by climbing shoes for maximum grip
- climbing forefoot inspired by climbing shoes for better grip



lichen/smoked
10041574RFX



periscope
10041575RFX





ACCESS W

Designed for durability and comfort the Rafiki ACCESS W hybrid street approach shoes for climbers feature a sticky rubber sole that provides great grip on any surface. The premium suede leather upper offers both weather resistance and comfort, while the low rubber toe cap will protect your toe in tougher terrain. The highlight feature of the shoe is the collapsible heel, which allows you to wear the shoes just like you would have your casual slippers, without having to worry about ruining them, which is practical for both climbing and bouldering. The special design of the tongue, fixed on one side ensures a comfortable fit that doesn't require adjusting, and the webbing loop allows for easy clipping or stowing. These shoes are perfect for everyday use and won't disappoint in unstable terrain, making them a versatile addition to any climber's shoe collection. Whether you're headed to the local gym, crag or just exploring the city, the Rafiki ACCESS W street approach shoes will keep you comfortable and stylish all day long.



ACCESS W

WOMEN'S HYBRID STREET SHOES FOR CLIMBERS WITH A STEP-IN HEEL

DESCRIPTION

MAIN: Durable leather upper
 MIDSOLE: molded EVA midsole
 OUTSOLE: sticky outsole from RFK street rubber

- durable
- breathable
- weather resistant

INFO

size: 37-42

SIZE 41:

- weight: 345 g
- insole length (MP): 27,1 cm

FEATURES

- durable leather upper
- super comfortable molded EVA midsole
- collapsible heel for easy use at the gym or crag
- rubber toe protection
- webbing loop for clipping options
- sticky rubber outsole inspired by climbing shoes for maximum grip
- climbing forefoot inspired by climbing shoes for better grip



arona/magnet
10041483RFX

light gray
10041484RFX





RAFIKI ACCESSORIES

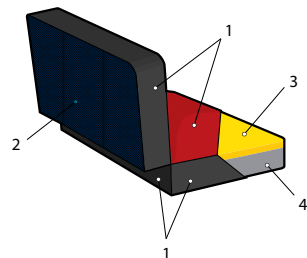


COLLAPSE

Looking for a reliable and sturdy bouldering crash pad that can save your tough falls? Look no further than our new three-part crash pad, made with two-layer foam cushioning that let you customize the hardness due your preference. The three part construction allows adaptation to terrain unevenness and excellent transporting dimensions. With backpack-like straps, you can easily carry it with you on any kind of climbing adventure. The polyester water-resistant coating, extra layer of PVC coating on the bottom side and steel buckles ensure durability and longevity. Plus: the exchangeable mattress means it'll last even longer! Proudly made in the Czech Republic.

GRADE

Fresh new addition to our Rafiki line: the classic two-piece bouldering crash pad GRADE is a must-have for any keen boulderer! Thanks to the two-layer foam cushioning, you may choose the ideal hardness for your landings. The durable design features a water-resistant polyester cover, an extra layer PVC coating on the bottom side and steel buckles to ensure it can withstand even the roughest treatment! The GRADE crash pad also comes with a possibility of replace the inner mattress, when it wears out over a time, so it will serve you for many years to come! The added comfortable "backpack straps" make it easy to carry it wherever your steps take you! Don't settle for less - upgrade your gear with our classic Rafiki crash pad instead!



- 1 - 100% polyester 6000
- 2 - 100% polyester 6000/PVC
- 3 - hard PE foam 30 mm
- 4 - PU foam 70 mm

DROP

The two-part thin bouldering crash pad is a versatile accessory that can be used to overlap gaps between individual crash pads as well as sit-start pad you will use when trying boulder problems just above the ground, where every inch of pad height plays a huge difference. On top of that: DROP may be also very useful as a comfortable sleeping mat or even as a picnic pad if you get hungry after a few attempts in your (yet) unclimbed project! The durable design features thick polyester coating and steel buckles. Two parts can be also detached and used separately. Its thin profile makes it absolutely easy to pack and transport and its multi-functional use makes this sit-start pad a great addition to any bouldering set-up. Give it a go and we are pretty sure that you're gonna sit your ass down on this pad! Proudly made by "golden Czech hands".

COLLAPSE

THREE-PART CRASH PAD

FABRIC

MAIN: 100% polyester 6000
SECONDARY:
100% polyester 600 D/PVC
FILLING:
hard PE foam 30 mm
+ PU foam 70 mm

INFO

size: D/S
weight: 9000 g
open: 210x100x10 cm



salsa
10041472RFX

GRADE

TWO-PART CRASH PAD

FABRIC

MAIN: 100% polyester 6000
SECONDARY:
100% polyester 600 D/PVC
FILLING:
hard PE foam 30 mm
+ PU foam 70 mm

INFO

size: D/S
weight: 6000 g
open: 140x100x10 cm



salsa II
10047829RFX

DROP

TWO-PART SITSTART CRASH PAD

FABRIC

MAIN: 100% polyester 6000
SECONDARY:
100% polyester 600 D/PVC
FILLING:
hard PE foam 30 mm
+ PU foam 70 mm

INFO

size: D/S
weight: 1700 g
open: 100x120x3 cm



salsa
10041470RFX



GRIT 40

The GRIT climbing backpack with a capacity of 40 liters is ideal for carrying all your climbing gear. Its rugged and wear-resistant construction, TPU coating, and full-length zipper in the middle of the back ensure durability and allow easy access to all your climbing stuff even when the bag is on the ground. So no more messy digging through all the climbing gear. With two large side pockets, padded shoulder straps, carabiner loops and retractable straps for attaching the rope or even a "clip-stick" straps: the GRIT is totally practical and comfortable! In addition, two large loops at the top and bottom allow you to move even an open backpack under the rock exactly where you need it! Every climber knows that if you like to taste climbing on hard "grit stone", you will have to visit the famous Peak District in Great Britain...well, it's only a matter of time before our GRIT backpack becomes just as famous!



GRIT 28

The smaller brother of the 40-liter GRIT backpack is definitely lighter and has a simple construction. But at the same time, it features the same durability and versatility! With its capacity of 28 liters and weight of 890g it is perfect for shorter trips and smaller climbing missions. Unassuming and all-situations suitable "blue nights" coloring with very trendy Rafiki design. That's our new GRIT climbing bag!

GRIT 40

CLIMBING BAG

FABRIC

MAIN: 600D polyester TPU coating
SECONDARY: 100% polyester
210 D coated

INFO

fit: UNI
size: O/S
weight: 1200 g
capacity: 40 l



blue nights
10041473RFX

GRIT 28

CLIMBING BAG

FABRIC

MAIN: 600D polyester TPU coating
SECONDARY: 100% polyester
210 D coated

INFO

fit: UNI
size: O/S
weight: 890 g
capacity: 28 l



blue nights
10041474RFX

HAULER 50

DURABLE WEATHER-RESISTANT DUFFEL BAG

Every enthusiastic climber will just love this 50l climbing travel bag. Rafiki Hauler is made of a durable material, has a wide zip opening and reinforced shoulder straps that can be either used to wear the bag as a backpack or stowed-away. Lightweight all-aluminum carabiners on the straps add to the durability. Handles all-around the bag enable easy carrying. Climbers will also love the webbing daisy chain on the sides of the bag for attaching climbing equipment or a water bottle. The bag can be packed into its own inner pocket. Inner mesh pockets are perfect for climbing shoes and small items fit well into a practical side pocket equipped with a waterproof zip. Just a perfect bag for a climbing trip.

FABRIC

MAIN: 100% polyester 420 D two tone ripstop (two side coated)

- durable
- waterproof
- packable

INFO

fit: UNI
size: O/S (55x33x25 cm)
weight: 650 g
capacity: 50 l

FEATURES

- durable fabric
- wide zipper lid opening with mesh pocket
- removable shoulder straps with metal buckles
- side zipper pocket
- front pocket w/ water-proof zipper
- 4 sturdy handles
- packable into its own pocket



anthracite
10031669RFX

ROPER

ROPE BAG

Don't want your rope rolling in wet sand, dirty mud, or even in a bad rainy condition anymore? We know you don't! That's why we've prepared for you our new Rafiki ROPER! A very practical and durable rope-sack with the large removable tarp and waterproof sealed seams protecting the rope inside from all external elements. Inside the sack, you can find a 100 % polyester-coated tarp with colorful loops for attaching rope ends, so you don't have to dig through the whole rope to find the right end to tie yourself again! The ROPER features two compression straps for perfect withdrawal and one adjustable shoulder strap. With its capacity of 25 liters, you can easily fit up to 80 meters long rope. Plus: the Rafiki ROPER design looks daaamn good!

FABRIC

MAIN: 100% polyester 600 D
SECONDARY: Tarp: 100% polyester
210D coated

INFO

size: O/S
weight: 590 g
length: tarp 135-125 cm
capacity: 25 l

FEATURES

- 2 compression straps
- adjustable shoulder strap
- integrated rope tarp with colour loops
- hold ropes up to 80 m



charcoal gray
10005126RFX



SCRUB 26

STREET TOP-LOADING BAG

Our new Rafiki SCRUB backpack with its capacity of 26 liters is perfect for everyday use. It is designed and inspired by the “big-wall hauler” bags featuring durable construction and steel buckles! The large side zipper opening allows easy access to all your items at the bottom of the bag. The internal zipper pocket keeps your electronic devices safe, while the small side pocket is ideal for stashing your phone or wallet. Whether you’re commuting to work, running errands or heading to the climbing gym, the SCRUB backpack has got you covered! You can choose from four eye-catching designs and pick the one that best describes your climber’s and adventurous nature!

FABRIC

MAIN: 100% polyester 900 D coated
 SECONDARY: 100% polyester
 4000 coated

INFO

fit: UNI
 size: D/S
 weight: 650 g
 capacity: 26 l

FEATURES

- top loading design
- drawcord skirt closure
- side full length zipper access
- internal zipper pocket



dark navy
10041475RFX



crest
10041478RFX



GUIDE BOOK COVER

GUIDE BOOK COVER

Introducing you to the Rafiki durable cover for all climbing guidebooks, which fits both slimmer formats and also those thickest books, and (finally): it protects all your climbing bibles! The protective cover is also equipped with a handy loop, so you can "clip it" or hang it anywhere you want! This time, we didn't worry too much about the design and we aimed for simplicity, but the most importantly: efficiency. Inside you'll find an integrated pen holder. The Rafiki GUIDEBOOK Cover will protect all of your climbing books against the bad weather and also from wear and tear (especially if you borrow it to your friends – we all know them!). So you can take your guidebooks to all your favorite climbing spots and other vertical adventures with no worries!

FABRIC

MAIN: 100% polyester 900 D coated
SECONDARY: 100% polyester
210D coated

INFO

fit: UNI
size: O/S (260x175x40 mm)
weight: 210 g

FEATURES

- sturdy cover
- strong attachment loop
- integrated pen holder



anthracite
10041477RFX



CAMP

SNAPBACK

No matter what they say, flat brims are cool. Get the Camp cap and set off for climbing or city walks. Don't give up on your style wherever you go. And if you ever happen to lack motivation, look into a mirror – Go Big or Go Home, man.

FABRIC

MAIN: 73% cotton 27% polyester
SECONDARY: 100% polyester

INFO

fit: UNI
size: O/S
weight: 98 g

FEATURES

- adjustable size



golden olive
10024457RFX

anthracite
10024458RFX

gray violet/anthracite
10045571RFX



SCOOP

CHALK BAG

Practical chalk bag with classic shape with distinctive Rafiki logo and drawstring closure. The natural part is a brush loop and the necessary waist belt.

FABRIC

MAIN: 97% cotton 3% elastane
SECONDARY: 100% polyester

INFO

fit: UNI
size: 0/S
weight: 100 g

FEATURES

- reinforce neck with drawstring closure
- 2 loops for belt fastening (belt included)
- brush loops
- microfleece lined interior



persian red
10001938RFX

lemon curry
10001939RFX

cabbage
10001941RFX

heliotrope
10029644RFX

dark navy
10029645RFX



BISHOP

BOULDERING CHALK BAG

Let us introduce you the Bishop. It's not a smeared climbing magnesium bag – it's a roll top boulder bag with a metal buckle closure. It withstands even indelicate manipulation. There is a side zip pocket to hide keys, money and a plaster for emergency cases.

FABRIC

MAIN: 100% cotton
SECONDARY: 100% polyester

INFO

size: O/S
weight: 175 g

FEATURES

- stable design
- Velcro roll-up closure with metal buckle
- side zippered pocket
- 2 brush slots
- microfleece lined interior



dark navy
10004689RFX



El Paso
10029650RFX



CHALK

MAGNESIUM

Get a grip with our high-quality magnesium products for climbing! Our magnesium is perfect for drying your skin and improving your grip during your climb. It's suitable for use on climbing walls, rocks, and even for gymnastics and fitness activities. We pride ourselves on offering the highest quality products, tested by the state health institute, and all made in the EU. Our range of products includes crushed magnesium, liquid magnesium, and magnesium balls, so you can choose the format that best suits your needs. Crushed magnesium is perfect for refilling your chalk bag or bucket, while liquid magnesium is ideal for quick and easy application. The magnesium balls are a convenient option for those who want to avoid the mess of powdered magnesium.

FABRIC

MAIN: 100% chalk

INFO

„less talk more chalk..“

FEATURES

- eco cosmetics products (not chemicals)
- 100% healthy



MG Ball 40 g
117RF0001AX



MG Liquid 200 ml
117RF0002AX



MG Liquid 100 ml
10005126RFX



MG Dose 100 g
117RF0003AX



MG Sack 250 g
117RF0004AX

BOW FLAG

A CLASSIC ADVERTISING FLAG AVAILABLE IN SIZE "S" OR "L" IT INCLUDES PRINTED TEXTILE, FLAGPOLE AND STAND FOR INDOOR AND OUTDOOR USE.

INFO

size: "S": 55x200 cm
"L": 80x340 cm



BANNER

PVC BANNER WITH METAL MESH AROUND THE PERIMETER FOR MOUNTING.

INFO

size: 300x100 cm



LOGO STAND

POS-CARDBOARD DISPLAY STAND, TWO-SIDE PRINT, SUITABLE EVEN FOR SUSPENSIONS IN, E.G. SHOP WINDOWS.

INFO

size: 35 cm - circle diameter



CUBE

IMAGE PAPER CUBE, TWO SIDES WITH LOGO PRINT, THREE SIDES WITH IMAGE PHOTO PRINT.

INFO

size: 30x30 cm





HANGERS

ORIGINAL SOLID WOODEN RAFIKI HANGERS WITH NOTCHES.

INFO

size: 43 cm



STICKERS

SET OF 11PCS SELF-ADHESIVE LABELS. ON AG SHEET. 50PC PER PACKAGE.

INFO

size: 105x148 cm



NALGENE BOTTLE

THE ORIGINAL. THE TRAILBLAZER. THE SIR EDMUND OF WATER BOTTLES.

INFO

size: 32 oz wide bottle

- durable
- screw top



RAFIKI TEAM

Our ambassadors include experienced climbers as well as interesting personalities and promising young aces. Thanks to a long term cooperation with them and with the climbing community, we have a chance to get great insights, ideas for new products and most importantly valuable feedback for each of our new collections.

#RAFIKICLIMBING



The most prominent members of the team are: **Vojta Trojan**, a tireless rock climber with many 9a under his belt. **Štěpán Stráník**, who is constantly trying and inventing new difficult projects in the Moravian Karst. **Edita Vopatová**, a leading Czech rock climber. **Rob Denayer** one of the best Belgian boulderers, **Angelo Bonechi**, the pioneer of hard bouldering in Sardinia, **Klemen Bečan** a climbing legend from Slovenia or Spanish 8c climber **Núria Díaz** and many other excellent climbers.

#RAFIKITEAM



RAFIKI

SUPPORTS CZECH NATIONAL CLIMBING TEAM

We are proud supporters of Czech National Climbing team from the young talents to the famous names in the adult categories. They compete in Rafiki apparel and give us valuable feedback and also confirmation that the clothes really work even on the highest level.

#RAFIKICLIMBING



ACHIEVEMENTS OF THE CZECH NATIONAL TEAM IN 2023

ADAM ONDRA

2nd place WC 2023 in Prague (boulder)
2nd place WC 2023 in Villars (lead)

ELIŠKA ADAMOVSKÁ

2nd place WC 2023 in Brianconu (lead)

ŠIMON POTŮČEK

3rd place WC 2023 in Žilina (lead)

MAREK JELIGA

4th place WC 2023 in Chambéry (boulder)

JAN KRÍŽ

4th place WC 2023 in Liebana (speed)

JAN ŠTÍPEK

2nd place EYC 2023 in Soure (boulder)

4th place EYC 2023 in Kaunas (boulder)

1st place EYC 2023 in Graz (boulder)

2nd place EYC 2023 in Soure (boulder)

1st place EYC 2023 in Duisburg (boulder)

1st place EYC 2023 in Niederwagen (lead)

1st place EYC 2023 in St. Pierre en Faucigny 2023 (lead)

2nd place EYC 2023 in Imst 2023 (lead)

LUKÁŠ MOKROLUSKÝ

4th place EYC 2023 in Soure (boulder)

2nd place EYC 2023 in Graz (boulder)

LUKÁŠ UHEREC

2nd place EYC 2023 in Niederwagen (lead)

MARIANA JANOŠOVÁ

2nd place EYC 2023 in Niederwagen (lead)

TEREZA ŠIRŮČKOVÁ

3rd place European games in KRAKOW 2023 (lead)

VIKTORIE KONEČNÁ

4th place EYC 2023 in Soure (boulder)

RAFIKI EVENTS



For a long time, we have been supporting exciting and often unique climbing events such as the Rafiki Water Boulder Games, the Rafiki Urban Boulder Race and other climbing competitions and festivals.

#RAFIKICLIMBING



SMÍCHOFF





rafikiclimbir
apparel for climber

RAFIKI MEDIA



#rafikiclimbing



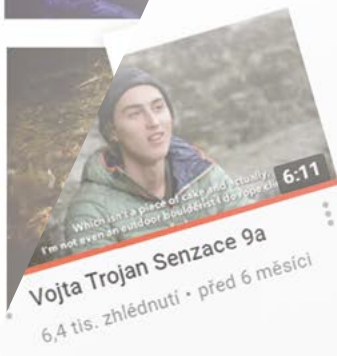
www.facebook.com/rafiki.climbinglife



www.rafikiclimbing.com



Rafiki Climbing



RAFIKI THE WORLD IS WIDE

You can bump into Rafiki while sipping coffee in the winding streets of Arco in Italy, when endlessly practising in the shady forests of Frankenjura in Germany, while improving your personal best in sunny Kalymnos, or when spending the winter climbing in far-away Spain.

#RAFIKICLIMBING



HOW TO MEASURE

MEN

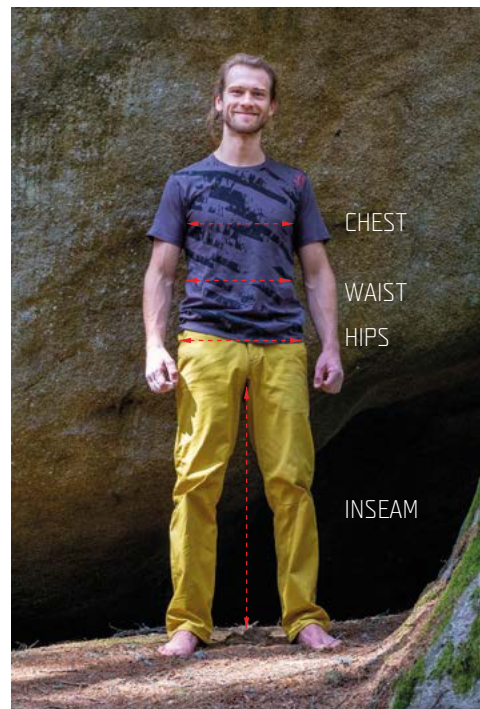
CHEST / Place the tape measure under the arms and around the fullest part of your chest with arms raised slightly.

WAIST / Measure all the way around your body, level with your belly button. Make sure it's not too tight and that it's straight, even at the back. Don't hold your breath while measuring.

HIPS / Put your feet together. Locate the correct area of your hips and measure the widest point around your buttocks. Hold the start of the tape measure on one hip, wrap it around your buttocks and around your other hip and then back to where you started.

INSEAM / Grab your favorite pair of pants. Measure the inseam starting at the crotch seam to the bottom of the pant leg.

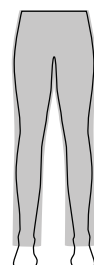
SLEEVE LENGTH / Measure with your hands on your hips, from the neck edge, across your shoulder and down the outside of your arm to the wrist bone.



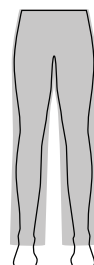
SLIM / FITTED
Fits close to the body
and form fitting.



STRAIGHT
Straight cut
through the body



RELAXED
Roomy and comfortable.
Drapes loosely on the body



WOMEN

HOW TO MEASURE

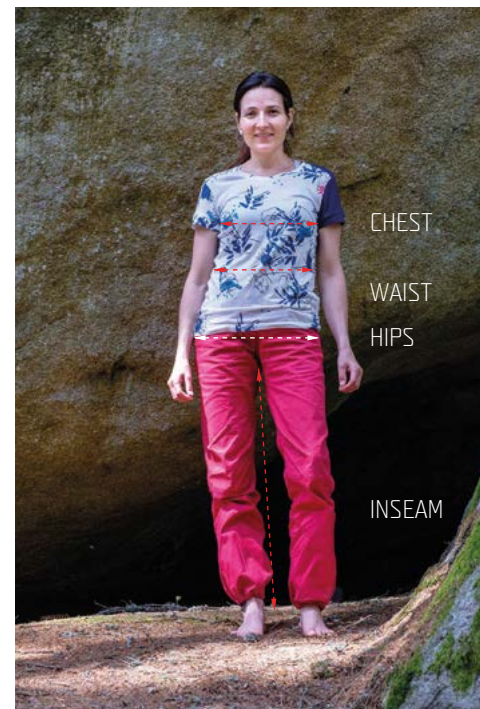
BUST / Place the tape measure under the arms and around the fullest part of your bust with arms raised slightly.

WAIST / Measure all the way around your body, level with your belly button. Make sure it's not too tight and that it's straight, even at the back. Don't hold your breath while measuring.

HIPS / Put your feet together. Locate the correct area of your hips and measure the widest point around your buttocks. Hold the start of the tape measure on one hip, wrap it around your buttocks and around your other hip and then back to where you started.

INSEAM / Grab your favorite pair of pants. Measure the inseam starting at the crotch seam to the bottom of the pant leg.

SLEEVE LENGTH / Measure with your hands on your hips, from the neck edge, across your shoulder and down the outside of your arm to the wrist bone.



MAN	XS	S	M	LX	L	XXL
	44	46	48	50	52	54
CHEST	86-93	94-98	99-103	104-108	109-113	114-118
WAIST	73-77	78-82	83-87	88-92	93-97	98-102
HIPS	87-91	92-96	97-101	102-106	107-111	112-116
INSEAM	82-84	83-85	84-86	87-89	89-91	90-92

WOMAN	32	34	36	38	40	42	44
	XXS	XS	S	M	L	XL	XXL
CHEST	77-80	81-84	85-88	89-92	93-96	97-100	100-103
WAIST	59-62	63-66	67-70	71-74	75-78	79-82	83-86
HIPS	85-88	89-92	93-96	97-101	102-105	106-109	110-113
INSEAM	76-79	78-81	80-83	82-85	84-87	86-89	88-90

KID	128	140	152
	6-7y	8-9y	10-11y
CHEST	64	69	74
WAIST	58	63	68
HIPS	70	75	80
INSEAM	56	64	73

The measurements are in **centimetres**.

The measurements are only indicative, not dimensions of the garment (except for inseam, which is garment measurement)
We recommend to try out our clothes personally.

Rafiki reserves the right to perform changes in the products presented in this workbook. Any part of this presentation cannot be reproduced without permission of Rafiki.

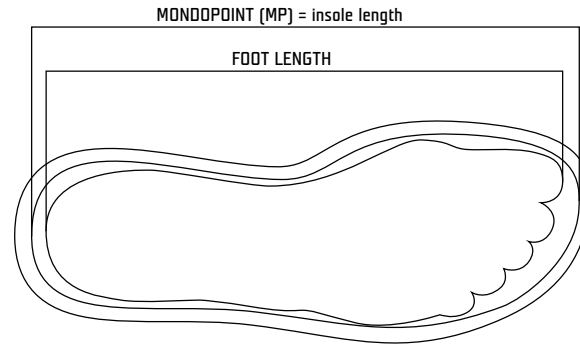
Photographers: Jan Novák, Jakub Cejpek, Adam Mašík, David Hájek, Jakub Konečný, Lukáš Klingora, Pavel Nesvadba, Jan Haráč, Petra Šebestová, Karolína Oliveriusová, Lukáš Biba and Rafiki Urban Boulder Race photo archive, Outdoor Concept, a. s. archive.

HOW TO MEASURE

SHOE

Foot length / Stand flat-footed with your heel against a wall. Use a ruler or tape measure from the back of your heel to the tip of your longest toe. Expect that a shoe with an inner size that exactly matches the length of your foot will not be comfortable. You should add 7-12 mm to the length of your foot (depending on how tight you want the shoe to fit) and then choose the right size based on the resulting length.

Foot width / Measure the flat width across the ball of your foot (the widest point) by stepping on the ruler or tape measure.

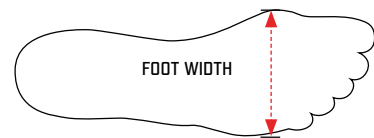
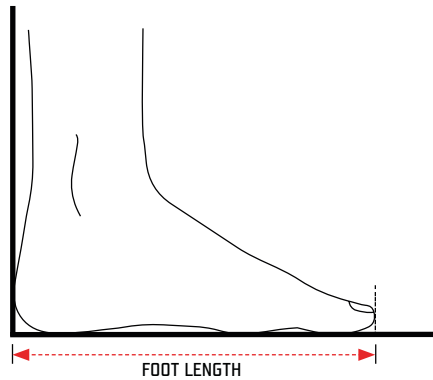


MEN

EUR	41	42	43	44	45	46	47
UK	7	8	9	9,5	10,5	11	12
USA	8	9	10	10,5	11,5	12	13
MP	26,4 cm	27,1 cm	27,8 cm	28,4 cm	29,1 cm	29,8 cm	30,4 cm
foot width	9 cm	9,18 cm	9,36 cm	9,54 cm	9,72 cm	9,9 cm	10,08 cm

WOMEN

EUR	37	38	39	40	41	42
UK	4	5	5,5	6,5	7	8
USA	5	6	6,5	7,5	8	9
MP	23,8 cm	24,4 cm	25,1 cm	25,8 cm	26,4 cm	27,1 cm
foot width	8,28 cm	8,46 cm	8,64 cm	8,82 cm	9 cm	9,18 cm





#RAFIKICLIMBING

 www.rafikiclimbing.com

 Rafiki-climbing life

 rafikiclimbing

 Rafiki Climbing

Americka 54 | 301 00 Plzeň | Czech Republic | tel.: + 420 379 200 666 | office@rafiki.cz